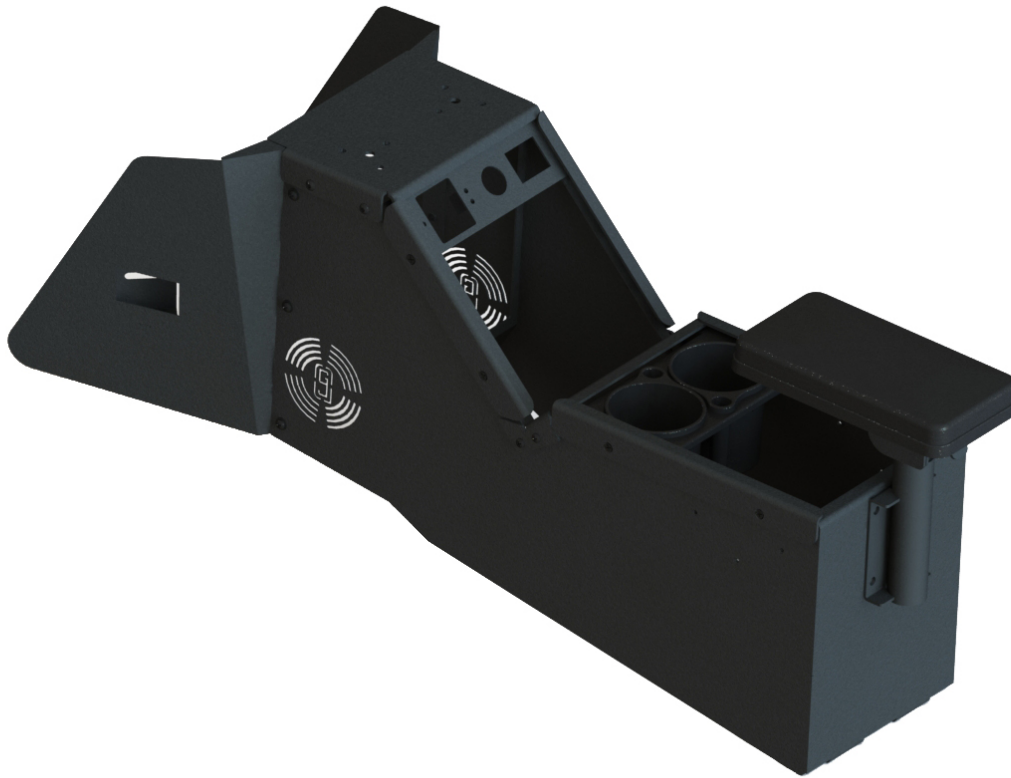


2020 Ford Police Interceptor® Utility Vehicle Specific Console with Cup Holder and Rear Armrest Kit



Item #7170-0734-01



Our ALL-NEW no-drill vehicle specific console box for the 2020+ Ford Police Interceptor Utility is designed with a low profile to create more usable space in the vehicle. Kit includes a console box, internal cup holder and rear armrest for added comfort. **Available Available Mid-July.**

Weight

32 lbs / 14.51 kg

Dimensions

Width: 9.2 in / 23.368 cm

Height: 17 in / 43.18 cm

Length: 25.94 in / 65.89 cm - Not including under-dash wings

Features

- Mounts to existing mounting studs in the vehicle (6 locations)
- Console box filler wings going under dash are included with console
- Top plate on console allows for mounting a motion attachment or close-to-dash
- Top plate and spreader bar in middle are removable to easy installing of console and running wiring

- Two (2) mounting holes on console top plate made for motion attachments (driver side and passenger side)
- Console is low profile between the seats to create a comfortable work environment
- Ships fully assembled (except for console accessories i.e. faceplate, 12V outlets, etc.)
- Three (3) faceplate and three (3) fillers are included per console
- Threaded PEMS on side and rear accommodate arm rests
- Console includes OEM relocation panel for Parking brake, USB/AUX module, and 12V outlet. (Panel is 2.5" (6.35cm) wide X 8.69" (22.07cm) long)

Mounting Space

- Vertical Section accommodates 9" (22.86 cm) of mounting space (not including OEM relocation filler panel)
- Horizontal Section accommodates 11" (27.94 cm) of mounting space (without internal cupholder)

Kit Includes

[7160-0846](#) - Internal Cup Holder

[7160-1334](#) - 2020+ Ford Utility Vehicle Specific Console Box

[7160-0429](#) - Rear Arm Rest

Warranty

Limited Lifetime Warranty