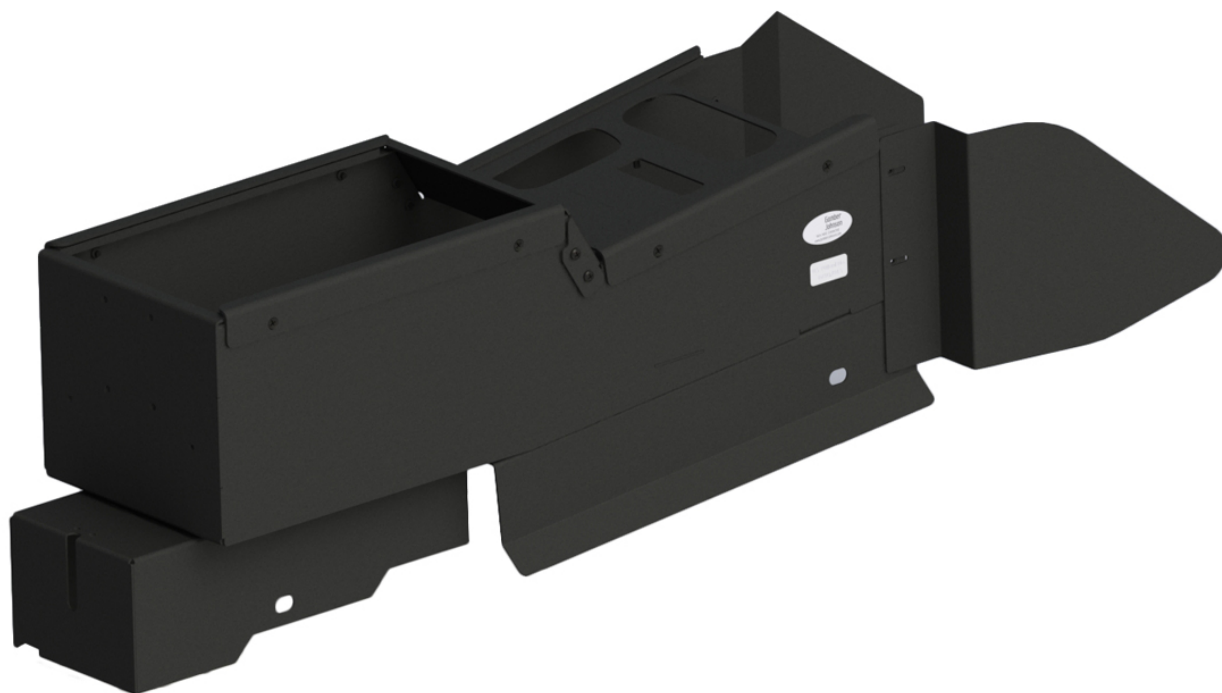


2018+ Dodge Durango Console Box Only

Item #7160-1047



Placement

On top of transmission hump

Seat Configuration

Bucket

Drilling Required

No - attaches to transmission hump

Weight

30.0 lbs / 13.6 kg

Dimensions

Height: 12.0 in / 30.5 cm

Width: 9.0 in / 22.9 cm

Depth: 32.0 in / 81.3 cm

Features

- Low profile, no-drill vehicle specific console box
 - Accommodates shifter
 - A traction control/OEM plate (needed only if vehicle has a traction control module)
- Easily mounts right to transmission hump, does not require a Leg Kit or MCS Top Plate
- A removable center brace for easy radio installation and wire routing
- Ships with dash filler panels that gives the box a sleek appearance that blends in with the car's aesthetics
- Threaded PEM's provided for rear mounted armrest to the console
- 1, 12 Volt and 2 switch knock-outs (Located on shifter faceplate)
- Heavy gauge steel, fully welded construction for long-term durability
- Black powdercoat finish for maximum corrosion resistance
- Will ship fully assembled
- Includes 3 faceplates and 3 filler panels
- Limited Lifetime Warranty

Horizontal section:

- Section accommodates 13" of mounting space and is designed to house radio control heads and accessories
- With traction control faceplate = 7.5" of mounting internal height
- With traction control faceplate = 10" of mounting space
- With traction control faceplate and Internal cup holder = 5.5" of mounting space
- Designed to house full sized devices and accessories

Vertical, angled section:

- Angled section accommodates 5" of mounting space and is designed to house radio control heads and accessories