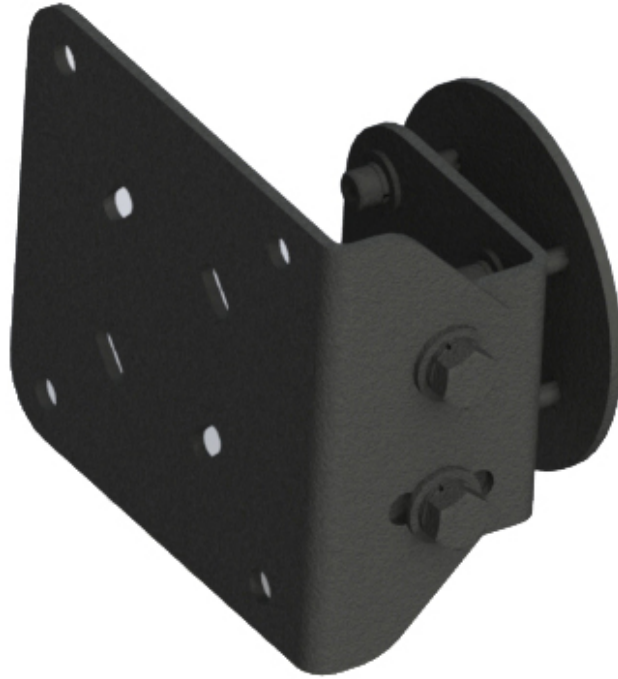


# Tilting Mount for Semi-Trucks

Item #7160-1262



The Tilting Mount for Semi-Trucks is designed as a quick solution for drilling into the dash and provides a tilting option to support a small tablet and ELD solutions.

## Weight

0.85 lbs / 0.39 kg

## Dimensions

Length: 4.21" / 10.69 cm

Width: 3.75" / 9.53 cm

Depth: 2.06" / 5.23 cm

## Features

- Coordinates with the Volvo VNL Mount (item no. [7160-1177](#)) and is designed with the International LT Dash Mount (item no. [7160-1243](#))
- Can be drilled directly to the dash with a backer plate for reinforcement of the mount to the dash
- Tilt and set features to easily adjust your tablet or device for comfortable use by the driver
- Has AMPS and VESA 75mm mounting hole patterns on the front for attaching a tablet or phone mount
- Designed for close-to-dash mounting

# Warranty

Limited Lifetime Warranty

## For More Configurations

This solution can be used in conjunction with a Zirkona semi-truck mount below.



Zirkona Medium Joiner, VESA 75mm Plate  
**Item No. 7160-1179**



Zirkona Medium Joiner, Vesa 75mm Plate, 2" Extension  
**Item No. 7160-1180**



Zirkona Medium Joiner, 2 Round AMPS Plates  
**Item No. 7160-1239**



Zirkona Medium Joiner, 2 Round AMPS Plates, 2" Extension  
**Item No. 7160-1240**