



# INSTALLATION INSTRUCTIONS

## Product

7160-1556

## Revision

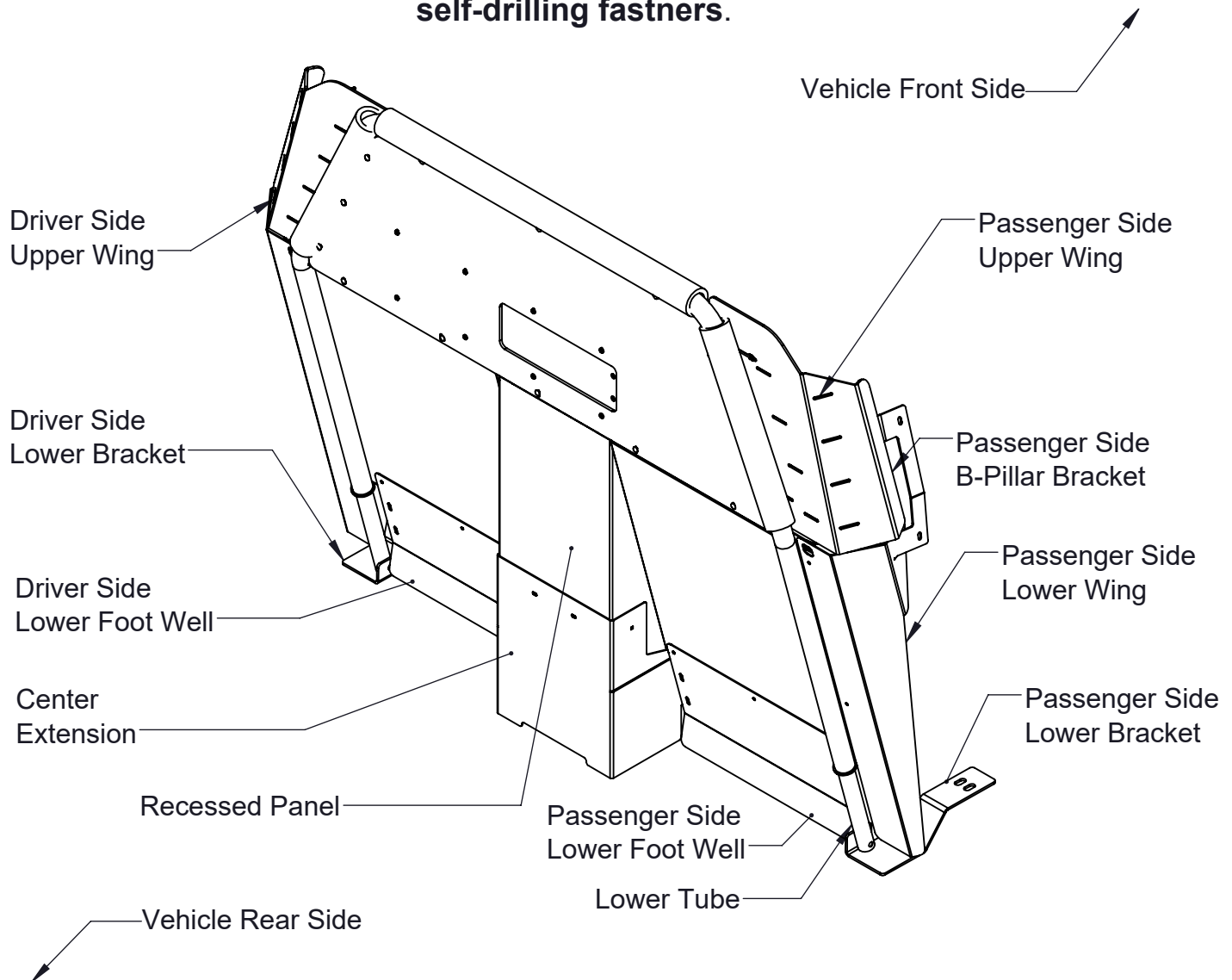
Rev A

## Form

INST-1021

INSTRUCTION SHEET 2021+ TAHOE PASSENGER PARTITION **Printing Spec:** PS-005

**WARNING: Locate all wiring, fuel lines, brake lines, coolant lines & refrigerant lines before drilling any holes or installing any self-drilling fasteners.**



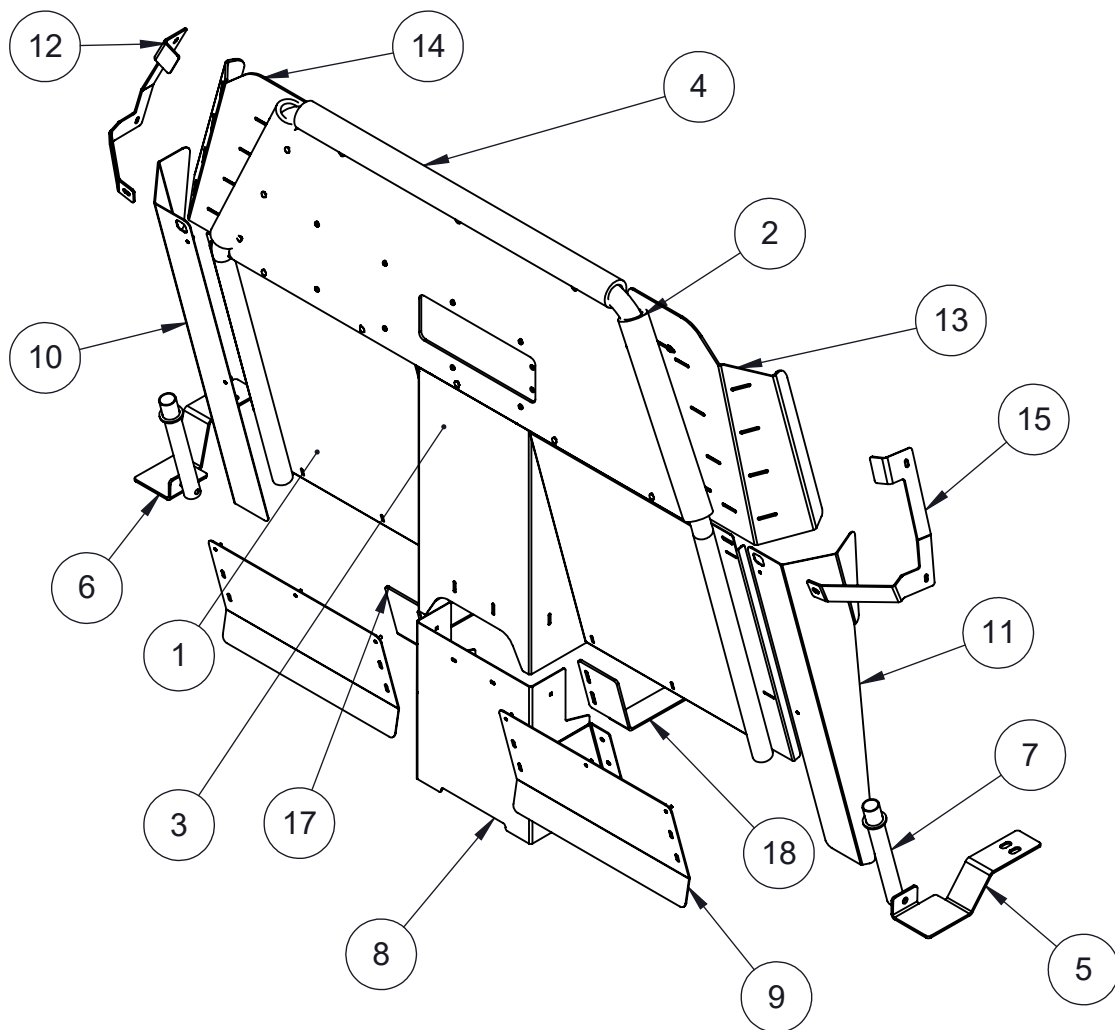
### Product Mounting Disclaimer

Gamber-Johnson is not liable under any theory of contract or tort law for any loss, damage, personal injury, special, incidental or consequential damages for personal injury or other damage of any nature arising directly or indirectly as a result of the improper installation or use of its products in vehicle or any other application. In order to safely install and use Gamber-Johnson products full consideration of vehicle occupants, vehicle systems (i.e., the location of fuel lines, brake lines, electrical, drive train or other systems), air-bags and other safety equipment is required. Gamber-Johnson specifically disclaims any responsibility for the improper use or installation of its products not consistent with original vehicle manufactures specifications and recommendations, Gamber-Johnson product instruction sheets, or workmanship standards as endorsed through the Gamber-Johnson Certified Installer Program.

© Copyright 2021 Gamber-Johnson, LLC

If you need assistance or have questions, call Gamber-Johnson at 1-800-456-6868

ITEM	QTY	PartNo	DESCRIPTION
1	1	17631	MAIN FRAME
2	2	17762	SIDE PADDING 16"
3	1	18323	RECESSED PANEL
4	1	18737	UPPER PADDING 32"
5	1	19625	PASSENGER SIDE LOWER BRACKET
6	1	19626	DRIVER SIDE LOWER BRACKET
7	2	19765	LOWER TUBE
8	1	19628	CENTRE EXTENSION
9	2	19627	FOOT WELL
10	1	19631	DRIVER SIDE LOWER WING
11	1	19632	PASSENGER SIDE LOWER WING
12	1	19777	DRIVER SIDE B-PILLAR BRACKET
13	1	19687	PASSENGER SIDE UPPER WING
14	1	19824	DRIVER SIDE UPPER WING
15	1	19828	PASSENGER SIDE B-PILLAR BRACKET
16	1	7120-0982	HARDWARE BAG
17	1	19912	DRIVER SIDE INNER BRACE
18	1	19913	PASSENGER SIDE INNER BRACE

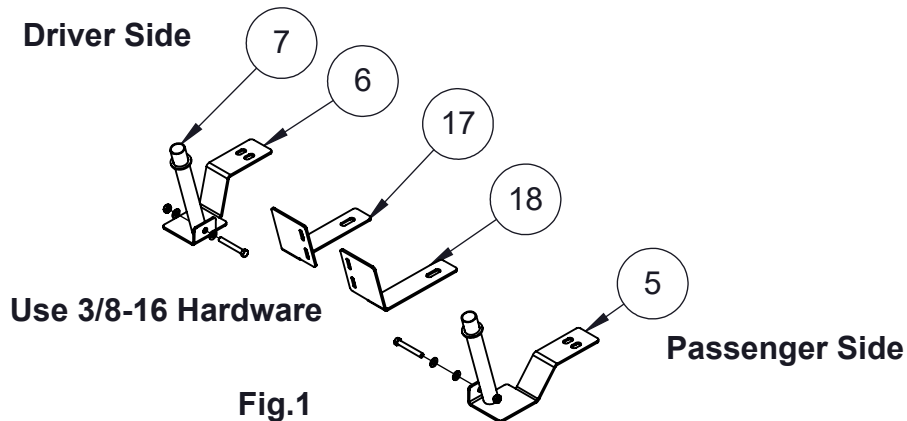


1) Slide & lean front driver & passenger seats forward.

2) Using T-50 bits remove both rear rail bolts of the front seats then slide Passenger & Driver Side lower brackets (item#5 & 6) underneath the seat track. Then install 2 inner partition brackets in the inner seat bolts. (Item #17 & #18, the 2 vertical slots will be sandwiched between center extension (Item#8) & Footwell (Item#9). Loosely reinstall the mounting bolts (Fig.1)

3) Loosely mount Lower tube (item#7) to each of the passenger & driver side lower brackets (item#5 & 6) using 3/8 hardware. (Fig.1 & Fig.2)

4) Remove B-Pillar Plastic trims on both sides (Fig 3.) Using 10mm socket, remove the OEM grab handle.



**Fig.2**  
**Driver Side Shown**

5) Attach Driver Side B-Pillar bracket (item# 12) on driver side to grab handle exposed holes, using OEM bolts. Repeat same step on passenger side with Passenger Side B-Pillar bracket (item# 15). Reinstall B-Pillar trims.

6) Insert Main Frame (item#1) into vehicle with sliding window knob facing toward front seats. Align Main Frame (item#1) with Lower tube (item# 7) & lower it onto them.

7) Tilt partition forward & loosely attach to B-Pillar brackets (item#12 & 15) using 5/16 hardware (Bolt, Washer & Nut) to Main frame (Item#1)



**Fig.3**  
**Driver Side Shown**



8) Attach foam padding 16" (item# 2) on the sides of main frame (item# 1) & 32" padding (item# 4) on top of main frame(item#1).

9) Ensure partition is centered within vehicle & mitigate any gap between vehicle headliner & upper Partition frame.

10) Fully tighten rear seat bolts, B-Pillar brackets (item# 12 & 15) and lower tube (item# 7) hardware to secure partition position.

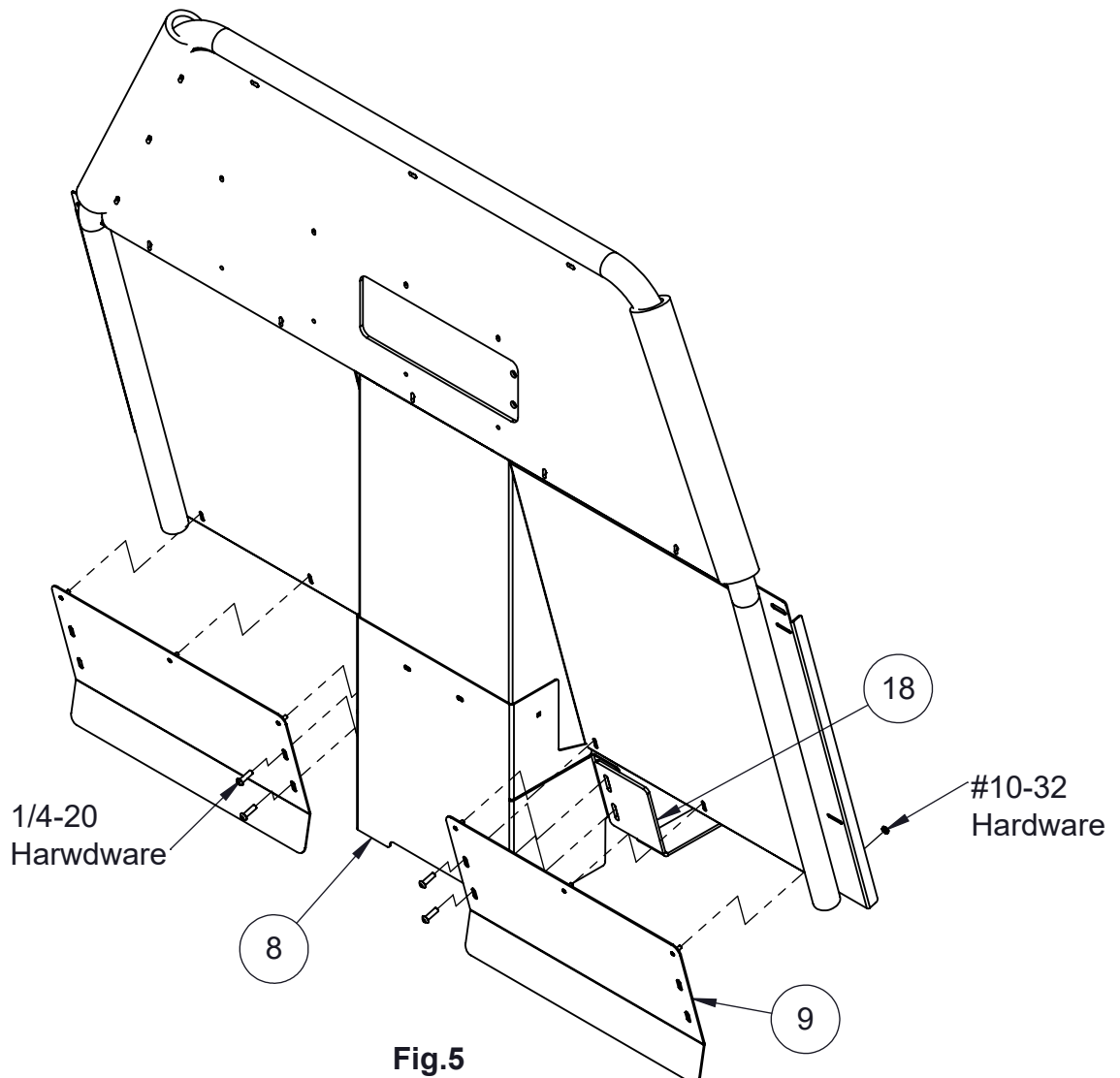
11) Attach recessed panel (item#3) to main frame (item#1). First install top two bolts & this will make it easy to install rest of bolts. Use #10-32 hardware supplied. (Fig.4)

12) Loosely attach foot well (item# 9 ) to flat panels using #10-32 Hardware on both Driver and Passenger side.(Fig.5)

13) Attach the Center Extension (Item#8 ) to the Recessed Panel (Item#3 )using #10-32 Hardware supplied.Also sandwich attach the inner brackets (Item# 17 & 18) with Center Extension and Main frame using 1/4-20 hardware. (Fig.5)



**Fig.4**



**Fig.5**

14) Finalize adjustments & tighten Center Extension (item#8). Fully tighten all hardware.

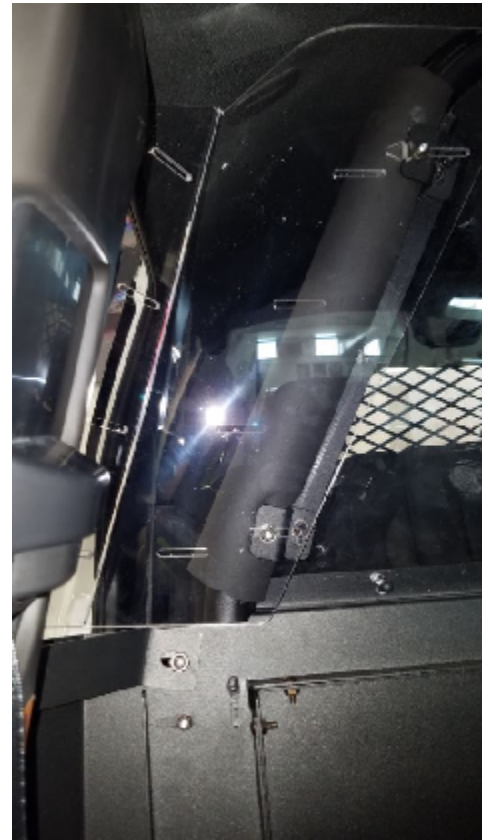
15) Install Lower Wings (item# 10 & 11) using #10-32 nuts. Ensure they are adjusted to minimize gaps along B-Pillars trim.

16) Attach Upper Wings (item# 13 & 14) to Upper Wings bracket using #10-32 hardware, use washer. Make use of slots(bracket comes attached/ slot on wing to close gap between upper wings & vehicle trim. (Fig.6).

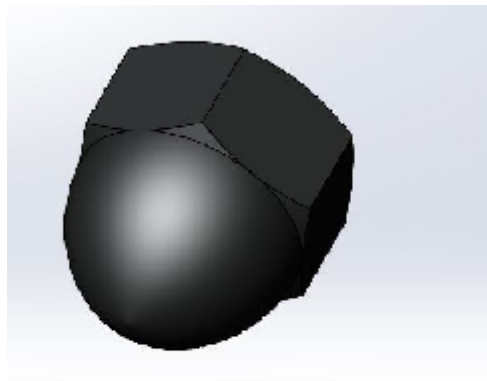
17) At upper wings, center extension & footwells, use cap nuts (Fig.7) supplied to avoid injuries.



**Fig.6**  
**Driver Side Shown**



**Fig.7**  
**Passenger Side Shown**



**Fig.8**  
**Cap Nut**