



INSTALLATION INSTRUCTIONS

Product**7110-1385****DELL LAPTOP RETROFIT HOOK KIT****Revision**

Rev. A

Form

INST-1068

Printing Spec: PS-001

This instruction sheet is for attaching the retrofit hooks onto Dell Laptop Docking Stations before Rev O and Cradles before Rev L. Retrofit hooks will allow Docking Stations to accomadate Dell Latitude 5430 Rugged and Dell Latitude 7330 Rugged Extreme laptops. NOTE: Once this installation is performed, the docking station will only accommodate the Dell Latitude 5430 and 7330 computer models.

This instruction sheet is for adding Retrofit Kits to the following products:

- Item No. 7160-0882-00** Dock - Non-RF - Rev. N and Prior
- Item No. 7160-0882-03** Dock - Tri-RF - Rev. N and Prior
- Item No. 7160-0883-00** Cradle - Non-RF - Rev. K and Prior
- Item No. 7160-0883-03** Cradle - Tri-RF - Rev. K and Prior

**Product Mounting Disclaimer**

Gamber-Johnson is not liable under any theory of contract or tort law for any loss, damage, personal injury, special, incidental or consequential damages for personal injury or other damage of any nature arising directly or indirectly as a result of the improper installation or use of its products in vehicle or any other application. In order to safely install and use Gamber-Johnson products full consideration of vehicle occupants, vehicle systems (i.e., the location of fuel lines, brakes lines, electrical, drive train or other systems), air-bags and other safety equipment is required. Gamber-Johnson specifically disclaims any responsibility for the improper use or installation of its products not consistent with the original vehicle manufactures specifications and recommendations, Gamber-Johnson product instruction sheets, or workmanship standards as endorsed through the Gamber-Johnson Certified Installer Program.

© Copyright 2021 Gamber-Johnson, LLC

If you need assistance or have questions, call Gamber-Johnson at 1-800-456-6868



Dell Retrofit Hooks Instruction Sheet

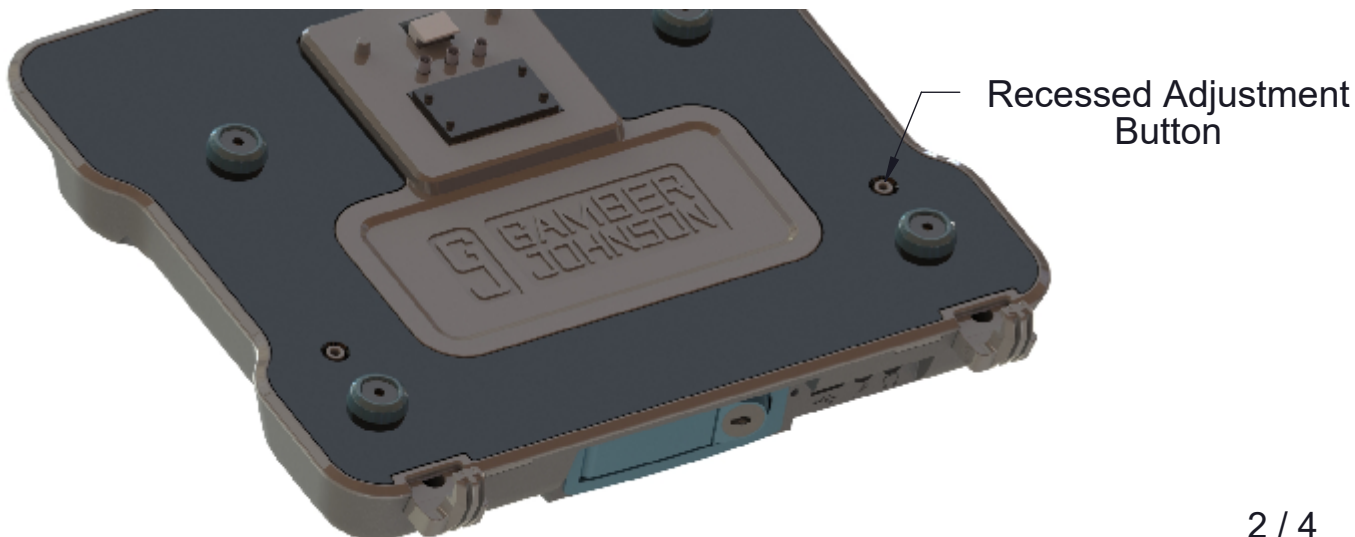
Required Equipment:
Dell Laptop Docking Station/Cradle
Dell Retrofit Hook Kit

Kit Includes:
(1) 5/32" Allen Key
(2) Retrofit Hooks
(1) Instruction Sheet



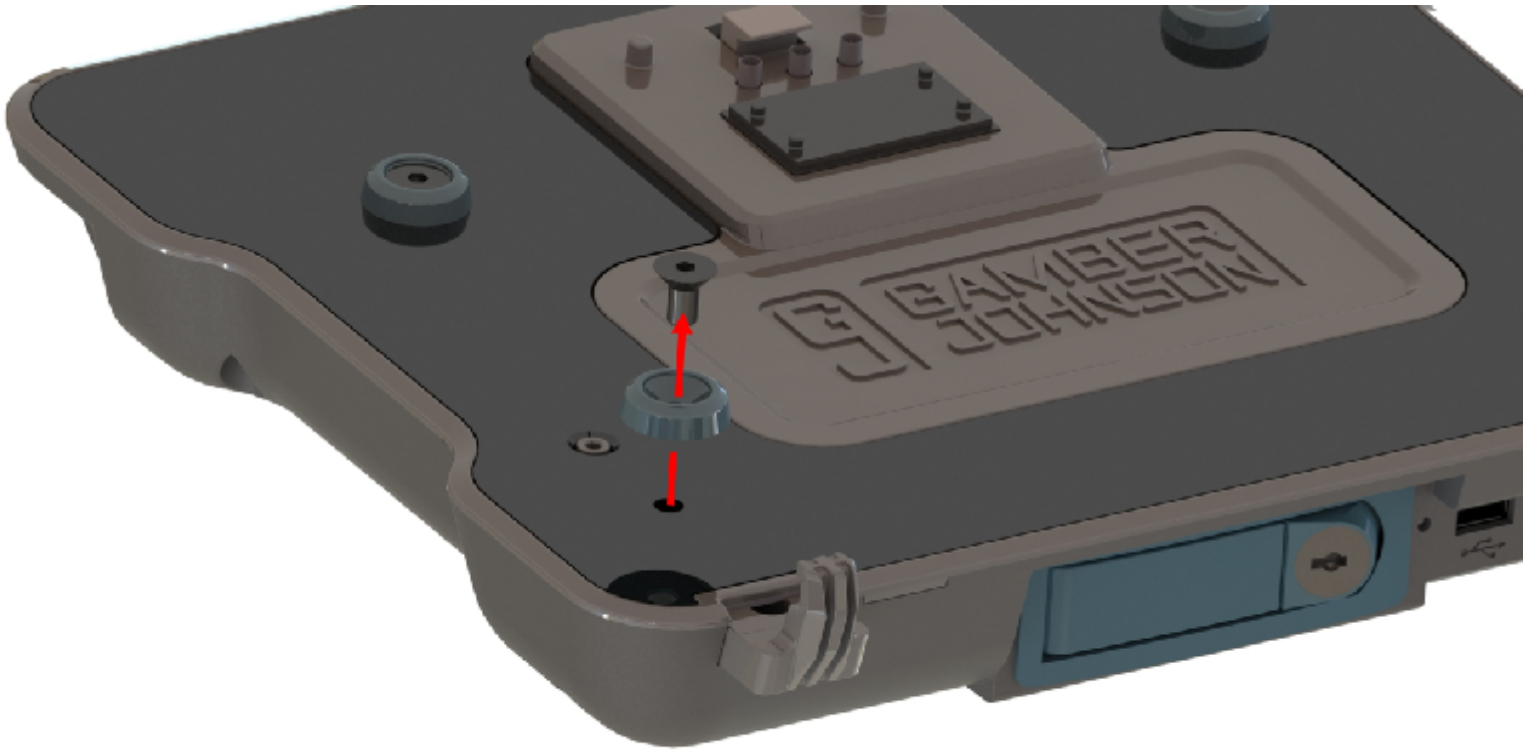
Installation Procedure

1. Adjust front hooks of docking station so they protrude out one position from the most inward setting.
 - Use a pen or other small tool to press and hold in recessed adjustment button and move hooks.



Installation Procedure (Continued)

2. Use supplied 5/32" Allen Key to remove both countersunk screws holding on the two front blue bumpers on the docking station.
 - Keep the screws and blue bumpers nearby



3. Take each blue bumper and insert the bumper in both of the Retrofit Hooks provided in the kit.



Installation Procedure (Continued)

4. Insert the tab on the bottom of each Retrofit Hook into the slot provided on the front hook of the docking station. Align the hole in the bumper with the threaded hole in the docking station and reinstall the screw using the 5/32" Allen wrench.

- Tighten screws until snug (15 in/lbs)



5. Perform a fit-check to make sure the Laptop docks in and releases properly.

