

INSTALLATION INSTRUCTIONS

Product	Revision	Form #
7160-0084 VEHICLE LEG KIT	Rev C	INST-360
FORD EXPEDITION (2007+)		Printing Spec: PS-001

The purpose of this installation instruction sheet is to illustrate the manufacturer's recommended method of installation of the Ford Expedition MCS Leg Kit into the Ford Expedition Police Package. The Police Package version of the Ford Expedition has the gear shifter on the steering column.

1. Begin by removing the two front seat bolts on both the driver's seat and the front passenger's seat (a total of four bolts), using a T-55 Torx bit. Loosen the rear seat bolts on both of the seats.
2. Lift one of the seats from the front and slide the corresponding Anchor Leg between the seat frame leg and the floor. The cut out in the Anchor Leg (see FIG. 1) will rest around the dimple in the seat frame leg (see FIG.2). Replace the bolts in removed in the previous step, but do not tighten all the way. Repeat on the other seat.
3. Fasten the Support Leg to the Top Plate ensuring that it is mounted to the rear most position of the Top Plate (see FIG. 3). Fasten the assembly to the Anchor Legs and once the top plate is in the desired position tighten all hardware that was loosened. Note: The Support Leg can be fastened to the transmission hump using self-tapping or drilling screw, but it is not necessary. This completes the installation of the Ford Expedition Mcs Leg Kit. Add a console box, armrest, cup holder or any other Gamber-Johnson product that is desired.

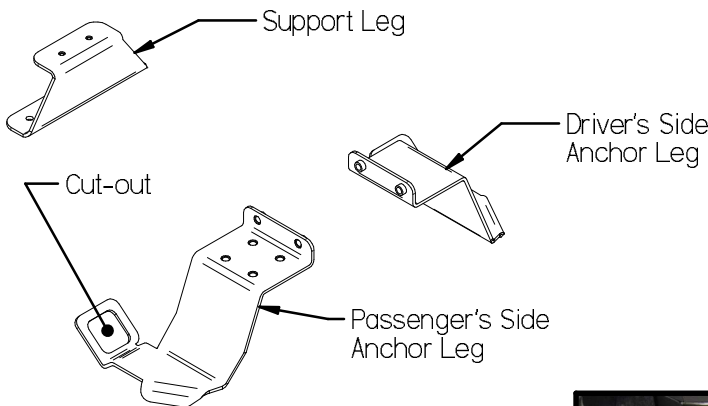


FIG. 1
Ford Expedition Leg Kit
Orientation

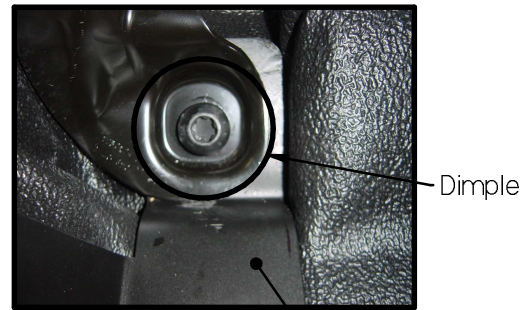


FIG. 2
Anchor Leg Mounting Position



FIG. 3
Ford Expedition Leg Kit and
Top Plate Installed

Top Plate

Support Leg

Driver's Side
Anchor Leg

Product Mounting Disclaimer

Gamber-Johnson is not liable under any theory of contract or tort law for any loss, damage, personal injury, special, incidental or consequential damages for personal injury or other damage of any nature arising directly or indirectly as a result of the improper installation or use of its products in vehicle or any other application. In order to safely install and use Gamber-Johnson products full consideration of vehicle occupants, vehicle systems (i.e., the location of fuel lines, brakes lines, electrical, drive train or other systems), air-bags and other safety equipment is required. Gamber-Johnson specifically disclaims any responsibility for the improper use or installation of its products not consistent with the original vehicle manufactures specifications and recommendations, Gamber-Johnson product instruction sheets, or workmanship standards as endorsed through the Gamber-Johnson Certified Installer Program.

© copyright 2012 Gamber-Johnson, LLC

If you need assistance or have questions, call Gamber-Johnson at 1-800-456-6868