



Very Well Connected™

INSTALLATION INSTRUCTIONS

Product**7160-0878, 7160-0884****Ford Utility Police Interceptor On-Dash Mount****Revision**

Rev.A

Form

INST-745

Printing Spec: PS-001**WARNING**

- You must read and follow all of these installation instructions. Failure to follow the installation instructions may result in serious bodily injury or death
- DO NOT install or use this assembly in the area in which the airbag on the vehicle may be deployed. The installer and user of this assembly are responsible for installing and using this assembly outside the area in which an airbag may be deployed. (See Product Mounting Disclaimer Below)
- If the installation of the equipment requires that the equipment (or any additional equipment that is added to the installation) be placed in front of an airbag, the airbag should be deactivated. In order to secure permission for deactivating the airbag you must contact the National Highway Traffic Safety Administration at 1-800-424-9393 to gain permission to do so. If you have any questions or need assistance, call Gamber-Johnson at 1-800-456-6868.
- High speed vehicle turns may cause parts of the assembly to swivel, interfering with the driver or other equipment.
- Keep these installation instructions with the product and readily available in the vehicle for future reference of other users of the product.
- Additional copies of the installation instruction can be obtained from Gamber-Johnson. If you need assistance or have any questions, go to www.gamberjohnson.com or call Gamber-Johnson at 1-800-456-6868.
- DO NOT remove the warning label from the product under any circumstances.

Product Mounting Disclaimer

Gamber-Johnson is not liable under any theory of contract or tort law for any loss, damage, personal injury, special, incidental or consequential damages for personal injury or other damage of any nature arising directly or indirectly as a result of the improper installation or use of its products in vehicle or any other application. In order to safely install and use Gamber-Johnson products full consideration of vehicle occupants, vehicle systems (i.e., the location of fuel lines, brakes lines, electrical, drive train or other systems), air-bags and other safety equipment is required. Gamber-Johnson specifically disclaims any responsibility for the improper use or installation of its products not consistent with the original vehicle manufactures specifications and recommendations, Gamber-Johnson product instruction sheets, or workmanship standards as endorsed through the Gamber-Johnson Certified Installer Program.

copyright 2016 Gamber-Johnson, LLC

If you need assistance or have questions, call Gamber-Johnson at 1-800-456-6868

Installing the mount:

Step 1. Remove the dash cover panel by removing the hex head bolt that attaches the cover panel to the vehicle dash with an 8MM socket. Keep the bolt and the white plastic clips for later.

Step 2. Remove the (2) side trim panels from the dash.

Step 3. Remove the main dash panel by removing the (4) hex head sheet metal screws that hold the main dash panel in place.

Step 4. Remove the (4) hex head sheet metal screws that hold the CD player in place.

Step 5. Set the interior dash bracket over the cd player and attach with the screws removed in step 4.



hex head bolt

Step 1

dash cover panel



side trim panels

Step 2



Step 3

main dash panel



hex head sheet metal screws (2 each side)

Step 3



hex head sheet metal screws (2 each side)

Step 4



interior dash bracket

Step 5

Step 6. Reinstall the dash panel removed during Step 3 using the original hardware. This will be a tight fit to get past the threaded inserts on the interior dash panel. It is easier to install by placing one side past the threaded inserts then rotating inward on the other side to slip the dash panel past the threaded inserts on the opposite side.

Step 7. Locate the (2) side trim panels removed in step 2.

Step 8. Cut off both side trim panels 8 3/8" from the top points of the trim.

Step 9. Make a second cut on on the bottom portion of the side trim panels that is 4 1/4" from the bottom point.

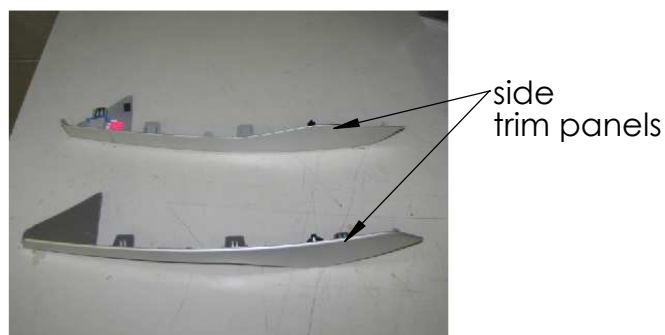
Step 10. Reinstall the modified side trim panels into the dash. The modifications allow the in-dash bracket to stick out of the dash for mounting the main bracket.

Note: New side trim panels can be purchased if the mount is removed in the future. The Ford part numbers are listed below.

Drivers side = BB5Z*78061A17*AA
Passenger side = BB5Z*78061A16*AA.



Step 6



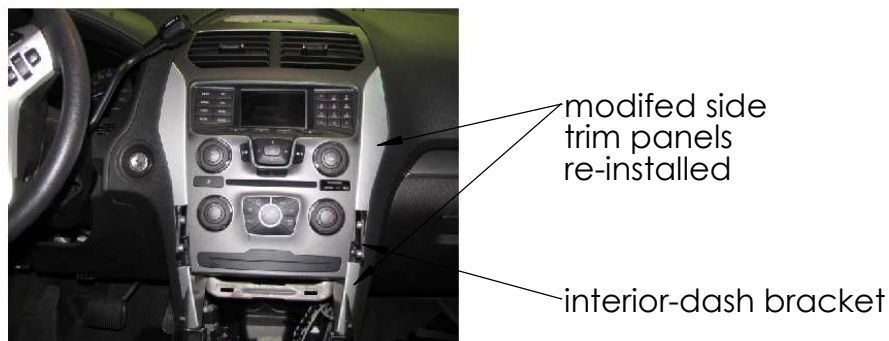
Step 7



Step 8



Step 9



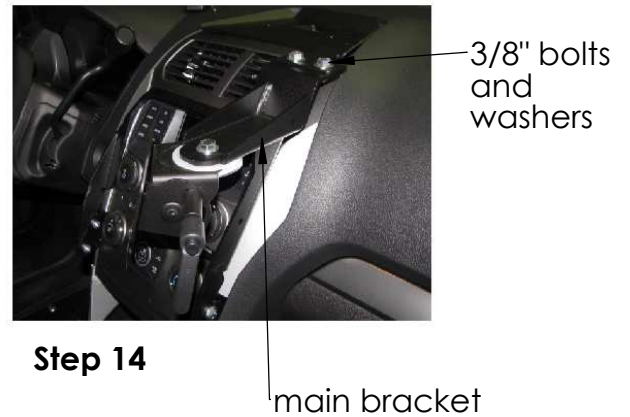
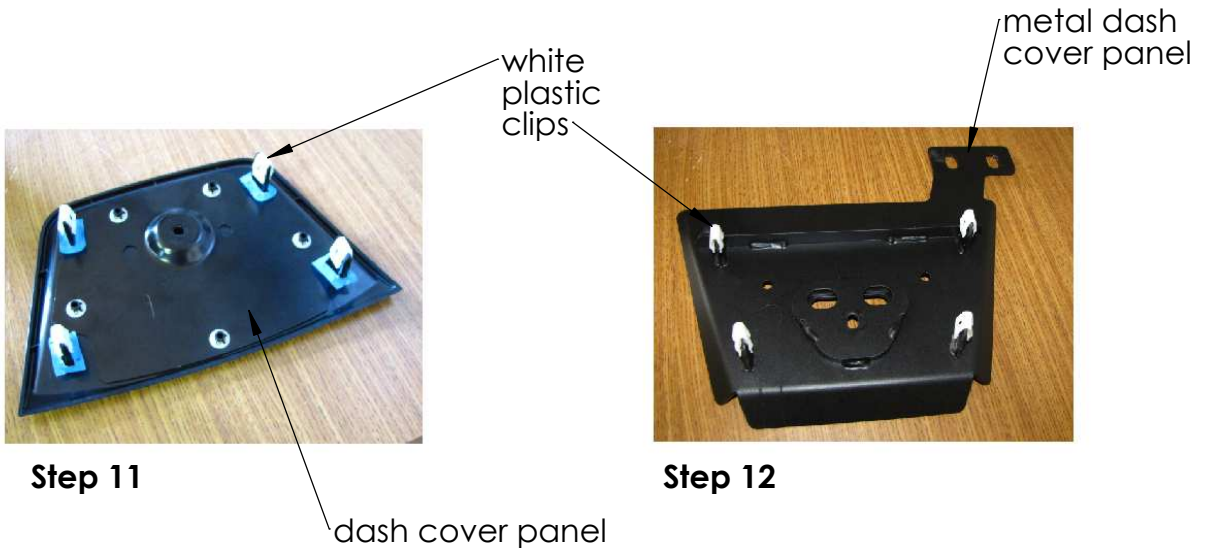
Step 10

Step 11. Remove the (4) plastic clips from the bottom side of the dash cover panel removed in step 1.

Step 12. Attach the (4) plastic clips (removed in step 11) to the new metal dash cover panel.

Step 13. Attach the metal dash cover panel using the same bolt that was removed in step 1. Tighten the bolt to a snug fit only. Over torquing will cause the U-Nut to strip.

Step 14. Attach the main bracket to the metal dash cover panel with the (2) 3/8 x 3/4" long hex bolts and flat washers found in hardware bag 7120-0746.



Note: Before step 15 and 16 can be completed you need to determine if a keyboard mount is being installed.

Step 15. ON-DASH MOUNT ONLY- Attach the bottom ends of the main bracket to the interior dash bracket with the (4) 1/4" x 3/4" hex bolts and flat washers found in hardware bag 7120-0746.

Step 16. ON-DASH MOUNT AND KEYBOARD MOUNT - Attach the keyboard cross bar and the on-dash main bracket to the interior dash bracket with the 1/4" x 3/4" hex bolts and flat washers found in hardware bag 7120-0746. Then attach the keyboard platform to the keyboard crossbar with the (2) 1/4" x 3/4" hex bolts and flat washers found in hardware bag 7102-0747.

Note: Various motion attachments from Gamber-Johnson can be mounted on the keyboard platform like a 7160-0220 (Mongoose) or 7160-0500 (6" locking slide arm).



Step 15

1/4" bolts and washers



Step 16

keyboard platform

keyboard cross bar

1/4" bolts and washers

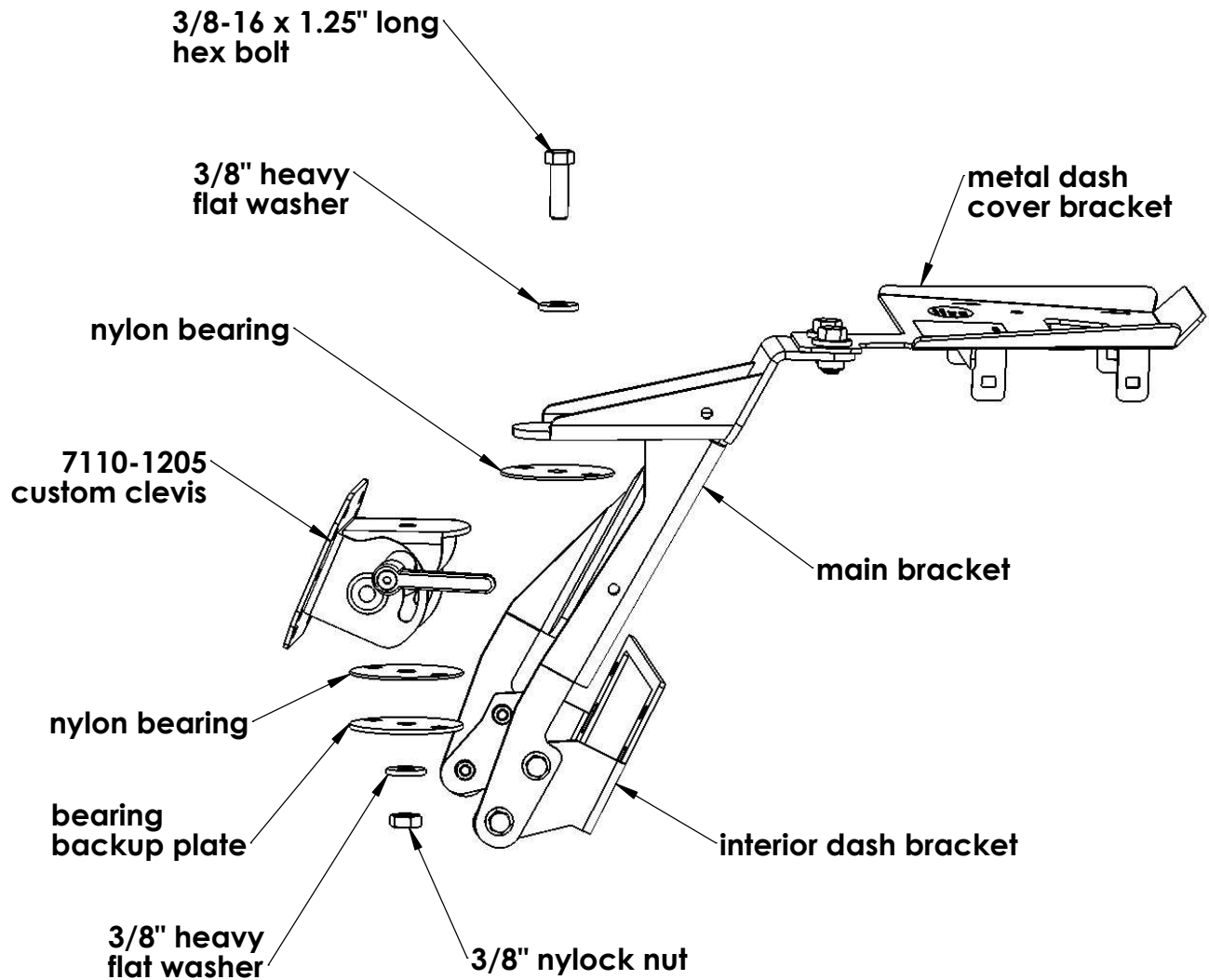
Step 17. Attach the 7110-1205 custom clevis to the main bracket with the 3/8" x 1 1/4" long hex bolt, flat washers, and nylock nut provided in hardware bag 7120-0746.



main bracket

**7110-1205
custom clevis**

Exploded view showing attachment of 7110-1205 custom clevis to the main bracket.



**3/8-16 x 1.25" long
hex bolt**

**3/8" heavy
flat washer**

nylon bearing

**7110-1205
custom clevis**

nylon bearing

**bearing
backup plate**

**3/8" heavy
flat washer**

3/8" nylock nut

**metal dash
cover bracket**

main bracket

interior dash bracket