



INSTALLATION INSTRUCTIONS

Product

7160-1053

PRINTER MOUNT, ZEBRA ZQ520

Revision

REV.A

Form

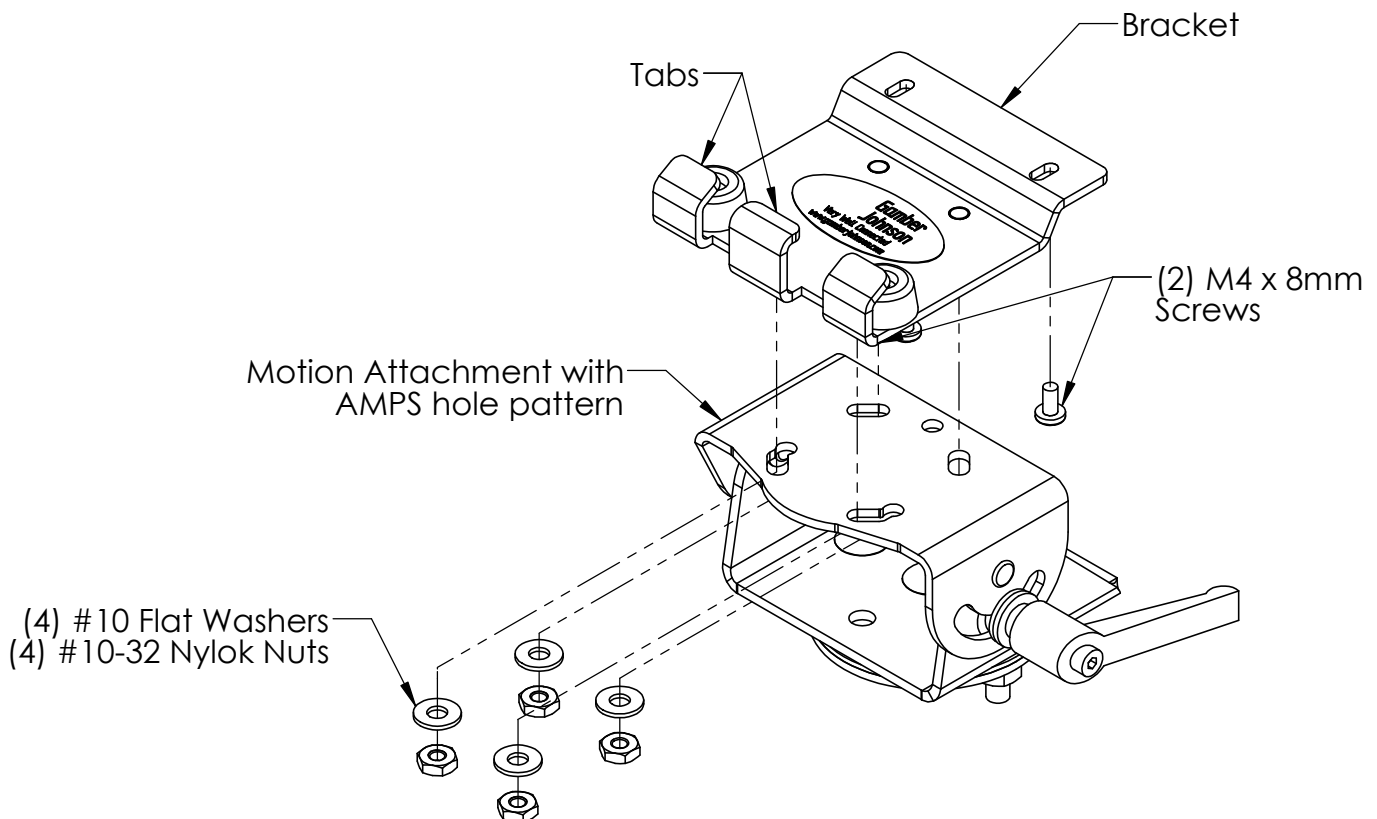
INST-817

Printing Spec: PS-001

The Zebra ZQ520 printer bracket is designed to be mounted to various Gamber-Johnson forklift mounts with an AMPS hole pattern.

- Attach the bracket to the printer by inserting the tabs into notches on the printer and installing (2) M4 x 8mm screws, from hardware bag, into bottom of the printer.

- Attach the bracket to Gamber-Johnson Motion Attachment using (4) #10 Flat Washers and (4) #10-32 Nylok Nuts supplied in hardware bag.



Product Mounting Disclaimer

Gamber-Johnson is not liable under any theory of contract or tort law for any loss, damage, personal injury, special, incidental or consequential damages for personal injury or other damage of any nature arising directly or indirectly as a result of the improper installation or use of its products in vehicle or any other application. In order to safely install and use Gamber-Johnson products full consideration of vehicle occupants, vehicle systems (i.e., the location of fuel lines, brakes lines, electrical, drive train or other systems), air-bags and other safety equipment is required. Gamber-Johnson specifically disclaims any responsibility for the improper use or installation of its products not consistent with the original vehicle manufacturers specifications and recommendations, Gamber-Johnson product instruction sheets, or workmanship standards as endorsed through the Gamber-Johnson Certified Installer Program.

© Copyright 2018 Gamber-Johnson, LLC

If you need assistance or have questions, call Gamber-Johnson at 1-800-456-6868