



INSTALLATION INSTRUCTIONS

Product

7170-0822-00
7170-0822-01

Revision

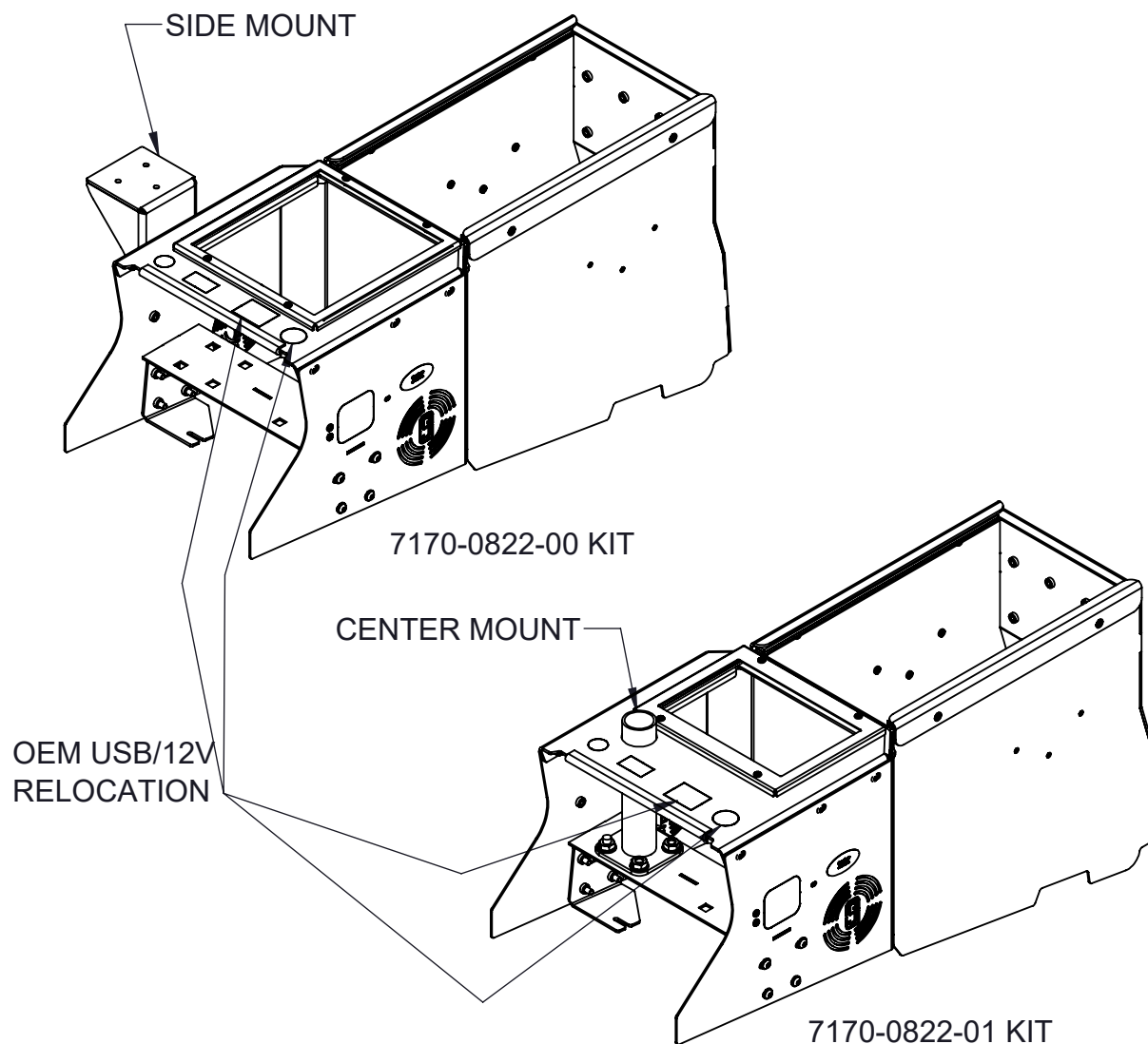
A

Form

INST-970

Printing Spec: PS-001

CONSOLE KIT - 2020+ FORD PI UTILITY, FULL DEPTH



Product Mounting Disclaimer

Gamber-Johnson is not liable under any theory of contract or tort law for any loss, damage, personal injury, special, incidental or consequential damages for personal injury or other damage of any nature arising directly or indirectly as a result of the improper installation or use of its products in vehicle or any other application. In order to safely install and use Gamber-Johnson products full consideration of vehicle occupants, vehicle systems (i.e., the location of fuel lines, brake lines, electrical, drive train or other systems), air-bags and other safety equipment is required. Gamber-Johnson specifically disclaims any responsibility for the improper use or installation of its products not consistent with original vehicle manufactures specifications and recommendations, Gamber-Johnson product instruction sheets, or workmanship standards as endorsed through the Gamber-Johnson Certified Installer Program.

© Copyright 2020 Gamber-Johnson, LLC

If you need assistance or have questions, call Gamber-Johnson at 1-800-456-6868

Installation:

1. Remove the OEM Center console by loosen the 4 nuts using 10MM socket.(shown in figure 1)
2. Remove the OEM center trim by loosen the 2 bolts holding it using 7MM socket. Remove the OEM 12v/USB/E-brake from the Trim, (to remove the E-brake use T20 socket.)



Figure 1

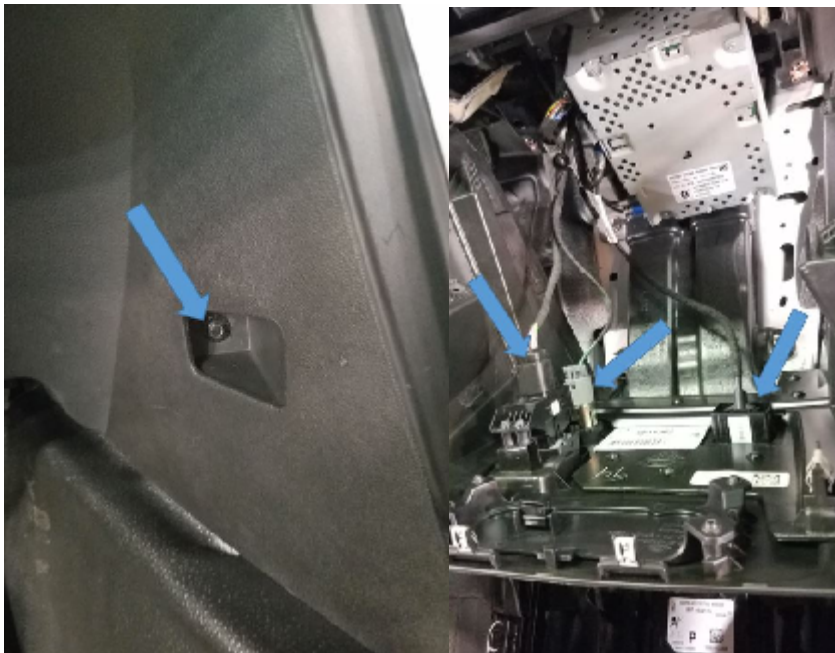


Figure 2

3. With the OEM controller removed reinstall the trim back in place. run the wires through the openings

4. With the OEM trim removed, place the 2 front leg of the full depth console in the OEM stud as shown. (yellow arrow)

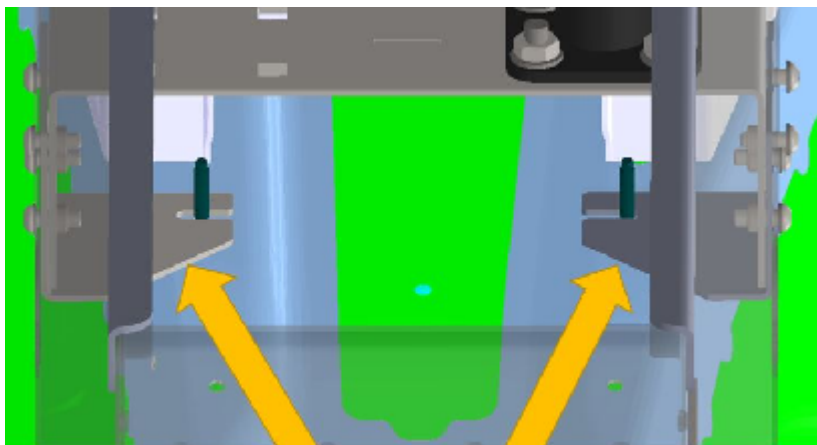


Figure 3

5. With the front legs installed, then drop the main console over the legs. (the legs stay on the inside of the console). The rear legs mounts to the rear OEM stud (yellow arrow). then the front leg can be attached to the console with 1/4-20 allen head bolts.

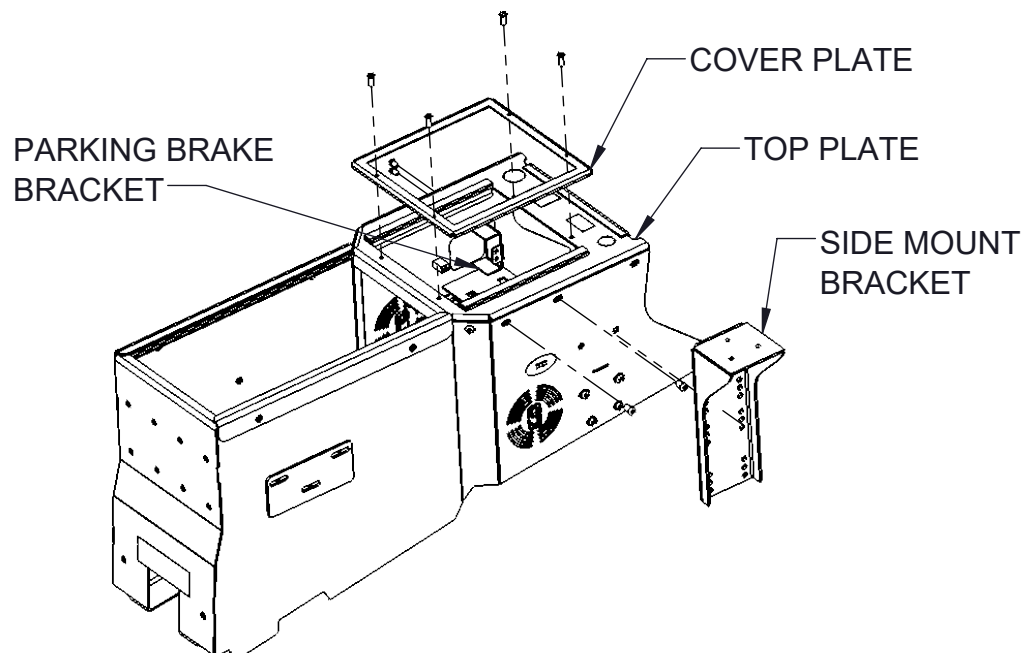
*If vehicle is equipped with OEM rear wire tunnel it can be directly attached to the console (black arrow) with provided 1/4-20 hardware.



Figure 4

Side Mount (7170-0822-00)

1. Install the parking brake switch to the side of the console first
2. Then install the top plate over the lower pole
3. Install equipment as needed, then attached the cover plate
4. Install the Side mount bracket if needed for motion device



Center Mount (7170-0822-01)

1. Install the parking brake switch to the side of the console first
2. Install the lower pole on to the console center beam
3. Then install the top plate over the lower pole
4. Install equipment as needed, then attached the cover plate.
5. For motion device attach the upper pole to the lower tube.

