

# QUICK GUIDE

## 2-IN-1 ATTACHABLE KEYBOARD, ET5X 10"



### A. FEATURES

1. Top Latch Ridge
2. Cover
3. Pogo Pins
4. Rubber Keys
5. Touchpad
6. Mouse Buttons
7. Connector Adapter
8. Built-in Kickstand
9. Carry Handle
10. Hinge
11. USB 2.0 Input Port
12. Part Number Label



### B. IMPORTANT INFORMATION

- Compatible with the Zebra ET5X 10" tablets only
- Includes a Keyboard and Connector Adapter for the tablet
- Temperature Range:
  - Operating -20°C to 50°C
  - Storage -40°C to 85°C
- IP54, FCC, CE, RoHS, REACH, C-Tick compliant
- This product is NOT designed to be mounted in a vehicle
- Use the tablet's USB-C port to charge the tablet
- Connect a flash drive or other digital data device to the USB 2.0 port on the side of the keyboard (Feature 11)
- Reference the Part Number Label for product information regarding any service needs (Features 12)

### C. HOW TO DOCK & REMOVE THE TABLET

Remove the rubber seal on the tablet. Snap in the Connector Adapter. The tablet is now IP65 rated.



Position the tablet in the Cover, snap the Top Latch Ridge onto the Pogo Pins.

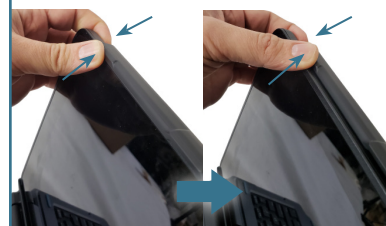


Rotate the tablet back into the Cover, snap the Top Latch Ridge over the top of the tablet.



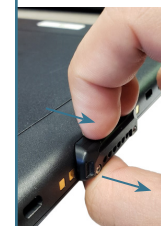
**TO DOCK**

On both sides, push up on Top Latch Ridge and pull forward on the back corner of the tablet.



**TO REMOVE**

Pull the Connector Adapter out to use other accessories.



Thank you for choosing Gamber-Johnson for your keyboard needs. To learn more visit [gamberjohnson.com](http://gamberjohnson.com) and search part number 7160-1585.