



INSTALLATION INSTRUCTIONS

Product

7160-1799, 7160-1780, & 7160-1860

Ford PIU single cell partition for OEM seats

Revision

Rev A

Form

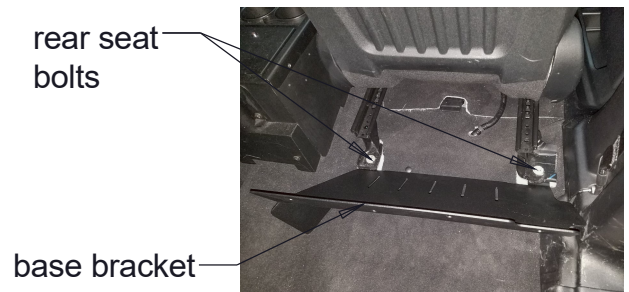
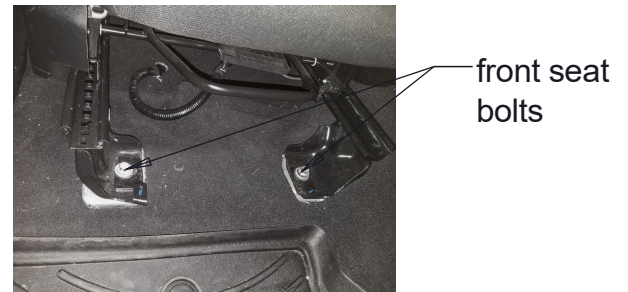
INST-1120

Printing Spec: PS-001

This instruction sheet is for mounting the Ford PIU single cell partition into the vehicle with the OEM rear seats installed. To complete the mount, you will first need the Ford PIU cargo partition (7160-1387) installed. See instruction sheet INST-932 for installing the cargo partition. It will be easier to install the single cell partition into the vehicle if you have 2 people doing the install.

Installing the single cell partition:

1. Slide the passenger front seat backward and loosen the front 2 seat bolts that attach the seat to the floor. Do not remove.
2. Slide the seat forward and remove the 2 rear seat bolts that attach the seat to the floor.
3. Tip the seat forward and insert the passenger side partition base bracket under the seat rails. Lower the seat onto the base bracket and reinsert the seat bolts loosely. Slide the partition base bracket forward as far as possible and tighten the rear seat bolts in place.
4. Slide the seat backwards, tighten the front seat bolts that were loosened in step 1, then slide the seat forward again so it is out of the way.
5. Remove the plastic passenger side garment hanger from the headliner above the passenger door. Replace with the rectangular garment hanger cover plate provided (GJ# 20778-16). Use the screw that was removed from the plastic hanger.



Product Mounting Disclaimer

Gamber-Johnson is not liable under any theory of contract or tort law for any loss, damage, personal injury, special, incidental or consequential damages for personal injury or other damage of any nature arising directly or indirectly as a result of the improper installation or use of its products in vehicle or any other application. In order to safely install and use Gamber-Johnson products full consideration of vehicle occupants, vehicle systems (i.e., the location of fuel lines, brake lines, electrical, drive train or other systems), air-bags and other safety equipment is required. Gamber-Johnson specifically disclaims any responsibility for the improper use or installation of its products not consistent with original vehicle manufactures specifications and recommendations, Gamber-Johnson product instruction sheets, or workmanship standards as endorsed through the Gamber-Johnson Certified Installer Program.

© Copyright 2023 Gamber-Johnson, LLC

If you need assistance or have questions, call Gamber-Johnson at 1-800-456-6868

Installing the single cell partition:

6. Remove the passenger side "Grab Handle" from the "B" pillar by removing the grab handle cover with a pick or a small flat screw driver. Then remove the 2 bolts that hold the grab handle to the "B" pillar.

7. Attach the Gamber-Johnson passenger side "B" pillar bracket with the two bolts removed in step 5.

Note: Use hardware bag 7120-1066 for steps 8 thru 12.

8. Attach the single cell partition to the base bracket and the "B" pillar bracket. Use (4) 5/16" flat washers and nylock nuts found in the hardware bag to attach the partition to the base bracket. Attach the "B" pillar bracket to the partition with the 5/16-18 x 1.00 hex bolt, (2) flat washers, and nylock nut.

9. Attach the lower closure wing to the partition. Position as far away from the door as possible in the mounting slots and tighten down with the (2) 1/4" flat washers and nylock nuts found in the hardware bag.

10. Remove the protective liners from the clear upper poly wing and attach to the partition with the (2) 1/4 x 7/8" socket button head bolts, (4) plastic flat washers, and (2) nylok nuts provided in the hardware bag. Position the upper poly wing as far away from the door as possible. The bottom should be touching against the top of the lower closure wing installed in step 9.

11. Attach the "Rear Divider Bracket" to the rear cargo partition by removing the two center carriage bolts and reattaching with the rear divider bracket in place. Leave the mounting hardware loose at this time. They will be tightened after the divider is tightened in place.

12. Attach the divider gun mount panel to the partition with the (3) 1/4" flat washers and nylock nuts found in the hardware bag.



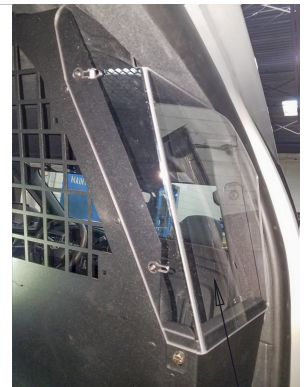
(B) pillar bracket



single cell partition



lower closure wing



clear upper poly wing



rear divider bracket



divider gun mount

Note: Use hardware bag 7120-1101 for steps 13 & 14.

13. Remove the protective liners from the clear front closure window and loosely attach it to the front partition with (2) 1/4 x 3/4" long carriage bolts, flat washers, and nylock nuts in the 2 holes closest to the "B" pillar.

clear front closure window loosely attached in these to locations



Installing the single cell divider:

Note: Use hardware bag 7120-1067 for steps 14 thru 19.

14. Attach the "OEM Seat Offset Panel" to the partition and the divider gun mount panel with the (6) 1/4-20 x 3/4" carriage bolts, (10) flat washers (2 per location on long side so the cap nuts don't blow through), and (6) nylock nuts supplied in the hardware bag.

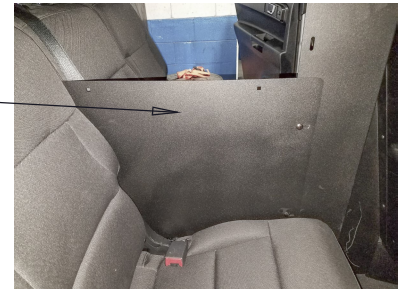


OEM seat offset panel

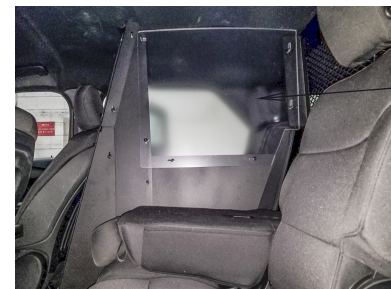
15. Tighten the clear front panel in place now that all the bolts are installed.

16. Slide the lower divider panel between the rear OEM seats and loosely attach to the OEM offset panel installed in step 14 with (2) 1/4-20 x 3/4" carriage bolts, (4) flat washers, and (2) nylock nuts.

lower divider panel



17. Rotate the center back seat cushion forward by pulling on the release strap located next to the headrest. Loosen the protective liners from the upper divider window approx. 3" from the edge to expose the mounting locations. Attach the clear upper divider panel to the OEM seat offset panel, the lower divider panel, and the rear divider bracket with the (6) 1/4-20 x 1" carriage bolts, flat washers, and nylock nuts supplied in the hardware bag. Tighten the bolts to the lower divider panel first, then lift the divider upward to close the gap at the headliner as much as possible and tighten the remaining bolts in place.

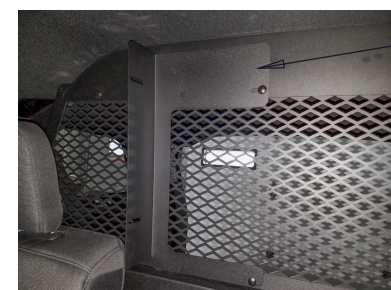


clear upper divider panel

18. Tighten the 2 carriage bolts in the center of the rear cargo partition that were loosened in step 11.

Note: the rear divider bracket has a second set of square holes (closer to the bend). If the end user wants, they can use these holes as a template to drill a second set of holes to the rear cargo partition.

19. Return the center back seat cushion to the upright position. **Note: push the divider panel away from the center seat back when rotating it upward into position to keep from scratching the clear upper divider window.**



rear divider bracket

20. Remove the remaining window protective liners.