



INSTALLATION INSTRUCTIONS

Product	Revision	Form
7160-1394	Rev. C	INST-995
DeX Heads Up Smartphone Docking Station		Printing Spec: PS-001

This instruction sheet is for the Gamber-Johnson docking station only. For instructions on features, set-up, and operation of the Samsung phone or connected device, please refer to the manual provided with those products.

This docking station is designed to be used with a variety of systems. Installation instructions for other Gamber-Johnson products are provided with each individual product.

This instruction sheet is for the following products:

- Item No. 7160-1394-00** Samsung Note9
- Item No. 7160-1394-01** Samsung S9+
- Item No. 7160-1394-02** Samsung S9
- Item No. 7160-1394-03** Samsung S10+
- Item No. 7160-1394-04** Samsung S10
- Item No. 7160-1394-05** Samsung Note10
- Item No. 7160-1394-06** Samsung Note10+
- Item No. 7160-1394-07** Samsung S10e
- Item No. 7160-1394-10** Samsung S20 Ultra
- Item No. 7160-1394-11** Samsung Note20
- Item No. 7160-1394-13** Samsung S20 FE

The docking station is designed to work with products that have a USB-C female port such as the Gamber-Johnson Touch Screen (7160-1451), USB hub (7160-1393), and Charging Adapter (7300-0501). These devices deliver power to charge the phone while in use.

A matching Phone Case is required and sold separately.

- Item No. 18551-00** Samsung Note9
- Item No. 18551-01** Samsung S9+
- Item No. 18551-02** Samsung S9
- Item No. 18551-03** Samsung S10+
- Item No. 18551-04** Samsung S10
- Item No. 18551-05** Samsung Note10
- Item No. 18551-06** Samsung Note10+
- Item No. 18551-07** Samsung S10e
- Item No. 18551-10** Samsung S20 Ultra
- Item No. 18551-11** Samsung Note20
- Item No. 20210-13** Samsung S20 FE



Product Mounting Disclaimer

Gamber-Johnson is not liable under any theory of contract or tort law for any loss, damage, personal injury, special, incidental or consequential damages for personal injury or other damage of any nature arising directly or indirectly as a result of the improper installation or use of its products in vehicle or any other application. In order to safely install and use Gamber-Johnson products full consideration of vehicle occupants, vehicle systems (i.e., the location of fuel lines, brakes lines, electrical, drive train or other systems), air-bags and other safety equipment is required. Gamber-Johnson specifically disclaims any responsibility for the improper use or installation of its products not consistent with the original vehicle manufactures specifications and recommendations, Gamber-Johnson product instruction sheets, or workmanship standards as endorsed through the Gamber-Johnson Certified Installer Program.

© Copyright 2020 Gamber-Johnson, LLC

If you need assistance or have questions, call Gamber-Johnson at 1-800-456-6868.

PRE-INSTALLATION RECOMMENDATIONS

Gamber-Johnson (GJ) recommends the positioning of all mounts and equipment in the vehicle prior to the actual install to verify mounting locations are safe and practical.

Gamber-Johnson strongly advises a "bench test" be conducted to verify all electronic and software issues are resolved prior to installation. Follow these steps:

1. Make sure the phone functions by itself as intended.
2. Connect a USB-hub, display, or any other equipment.
3. Insert the phone into the docking station. Verify start-up of all components and software (mouse, flashdrives, printers, etc.).

IMPORTANT SAFETY INFORMATION FOR INSTALLERS

Before Installation

Safety is dependent on the proper installation and servicing of this docking station. It is important to read and follow all instructions before installing this product. Use proper mounting equipment or hardware to secure this product.

Safety is a top priority for Gamber-Johnson. To properly install Gamber-Johnson equipment, you must have a good understanding of automotive electrical procedures and systems, along with proficiency in the installation and service of aftermarket vehicle equipment.

WARNING: Opening the docking station will void the product warranty. There is no need to adjust the electrical components within the hub at any time.

During Installation

Do not install equipment or route wires or cords in the deployment path of any airbag.

When drilling into the vehicle, ensure both sides of the surface are clear of anything that could be damaged.

Follow the bare wire installation instructions on the Gamber-Johnson touch screen, hub, or charging adapter products for safe and correct installation.

WARNING: If wiring is shorted to the frame, high current conductors can cause hazardous sparks resulting in electrical fires or flying molten metal.

After Installation

Test the dock to ensure it is working properly.

1. Do not use the dock if the cable or plug is damaged.
2. Do not use the dock if water comes in contact with any part USB-C ends. Immediately disconnect power and ensure the system is dried.

File these instructions in a safe place and refer to them when performing maintenance or re-installing.

WARNING: Failure to follow all safety precautions and instructions may result in property damage, serious injury, or death.

FEATURE IDENTIFICATION

Release Button

Platform to press and release the phone, allowing safe removal. See page 4 for instructions.

Latch Tab

Securely holds the phone in the docking station during use. Guarantees safe connection.

Exterior Walls

Guides the phone directly and correctly to the USB-C connector. Provides protection to the USB-C

USB-C Connector

Phone Model Indicator

Contact-Friendly Edges

USB-C Male Cable

Connect to an external display, hub, or charging adapter. This product is Thunderbolt 3 certified and has about 2.25 feet of cable length.

Rear Stops

Protects the Latch and Release from rotating too far backwards and damaging the plastic.

Part Number Label

Provides information on the product. Reference this information regarding any service needs.

Optional Zip-Tie Slot

Zip-ties are provided.

M20 Mounting Threads

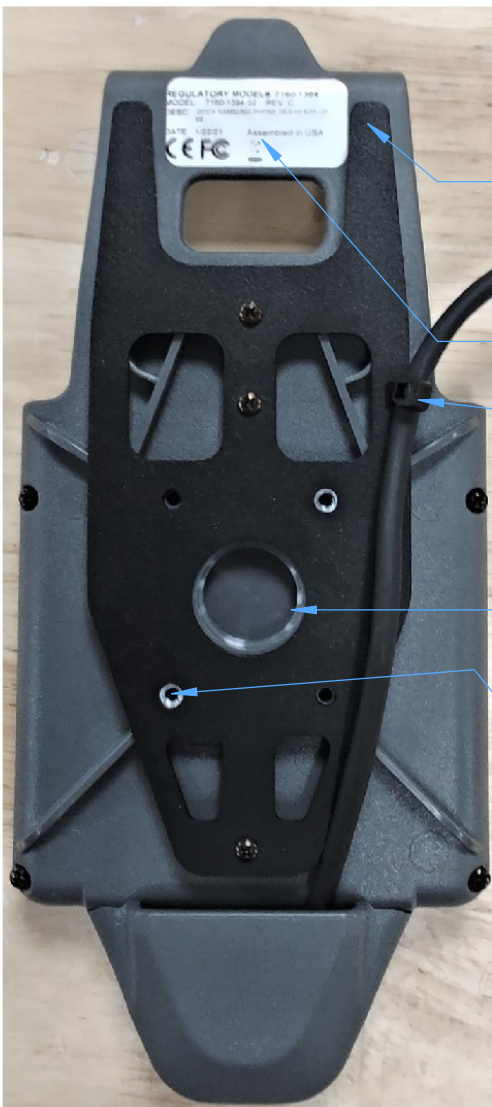
Built for the Gamber-Johnson Zirkona line of products. Attach directly to the M20 thread, no other hardware or plates needed.

Amps Mounting Pattern

Two #6 sized threaded inserts. Hardware is NOT provided.

Camera Access

Button Access

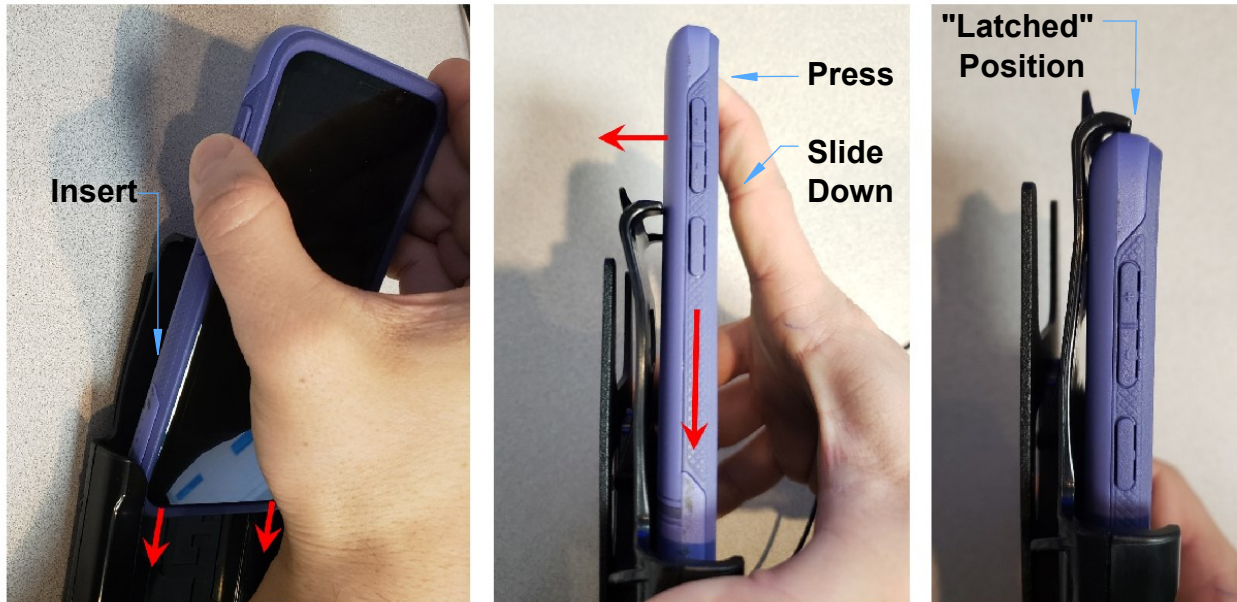


DOCKING AND UNDOCKING THE PHONE

OPERATION - Docking

1. Insert the bottom of the phone into the docking station.
2. Press backwards on the Latch Tabs until the phone is close to parallel with the back surface of the docking station. While in this position, slide the phone down.
3. The phone will be 'Latched' once the Latch Tabs snap over the top of the phone. This should be visual and audible to the user. This will work one-handed, left or right.

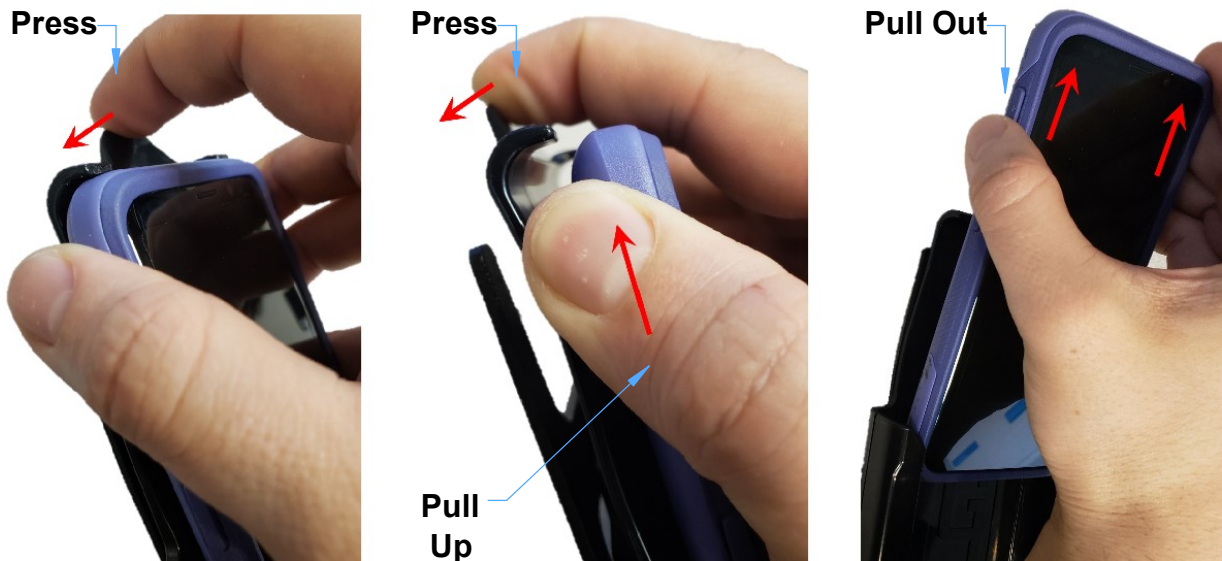
After practice, this motion should be a blind and fluid activity with the Exterior Walls of the docking station guiding the phone without thought into the correct position.



OPERATION - Undocking

1. While holding the edges of the phone, press the Release Button with your index finger until the Latch Tabs clear the phone.
2. With the Release Button in the backward position, pull up on the phone.

Again, this motion should be a fluid activity allowing fast and safe removal of the phone. This is designed to work one-handed, right or left.



REGULATORY CERTIFICATION INFORMATION

Regulatory Model #: **7160-1394**

GJ Model #s & Description:

7160-1394-00	Dex Heads Up Docking Station, Samsung Note9
7160-1394-01	Dex Heads Up Docking Station, Samsung S9+
7160-1394-02	Dex Heads Up Docking Station, Samsung S9
7160-1394-03	Dex Heads Up Docking Station, Samsung S10+
7160-1394-04	Dex Heads Up Docking Station, Samsung S10
7160-1394-05	Dex Heads Up Docking Station, Samsung Note10
7160-1394-06	Dex Heads Up Docking Station, Samsung Note10+
7160-1394-07	Dex Heads Up Docking Station, Samsung S10e
7160-1394-10	Dex Heads Up Docking Station, Samsung S20 Ultra
7160-1394-11	Dex Heads Up Docking Station, Samsung Note20
7160-1394-13	Dex Heads Up Docking Station, Samsung S20 FE

Certifications:

- EN 55032: 2012 / AC: 2013, Class B
- EN 50498: 2010

This device complies with Part 15 of the FCC Rules. Operation is subject to the following two conditions: (1) This device may not cause harmful interference, and (2) this device must accept any interference received, including interference that may cause undesired operation.



Gamber-Johnson LLC, 5001 Joerns Dr.,
Stevens Point, WI, 54481, USA, 715-344-3482