



TRIMLINE VEHICLE DOCK FOR PANASONIC TOUGHBOOK® G2 TABLET COMPUTERS

USER GUIDE

Description	Item Number
Panasonic TOUGHBOOK® G2 TrimLine Tablet Docking Station, NO RF	7300-0638
Panasonic TOUGHBOOK® G2 TrimLine Tablet Docking Station, NO RF with LIND Auto Power Adapter	7300-0642
Panasonic TOUGHBOOK® G2 TrimLine Tablet Docking Station, Lite Port Replication, NO RF	7300-0706
Panasonic TOUGHBOOK® G2 TrimLine Tablet Docking Station, Lite Port Replication, NO RF with LIND Auto Power Adapter	7300-0708
Panasonic TOUGHBOOK® G2 TrimLine Tablet Docking Station, DUAL RF	7300-0646
Panasonic TOUGHBOOK® G2 TrimLine Tablet Docking Station, DUAL RF with LIND Auto Power Adapter	7300-0650
Panasonic TOUGHBOOK® G2 TrimLine Tablet Docking Station, Lite Port Replication, DUAL RF	7300-0710
Panasonic TOUGHBOOK® G2 TrimLine Tablet Docking Station, Lite Port Replication, DUAL RF with LIND Auto Power Adapter	7300-0712
Panasonic TOUGHBOOK® G2 TrimLine Tablet Cradle (No electronics)	7300-0653
Panasonic TOUGHBOOK® G2 TrimLine Tablet Cradle (No electronics) with LIND Auto Power Adapter	7300-0655

NOTE: Standard docking stations are not compatible with TOUGHBOOK G2 tablet device's using a hand strap attached to the rear of the tablet, or an extended battery (Extended Battery Model # FZ-VZSU1UU). Access to other rear mounted features of the tablet might also be affected (fingerprint reader, smart card reader, HF RFID reader, and touch pen).



GENERAL INSTRUCTIONS

SAFETY:

- Safety is dependent on the proper installation and servicing of this docking station. It is important to read and follow all instructions before installing this product.
- Proper installation requires a good understanding of automotive electrical systems and is recommended to be performed by qualified technicians only.
- There are no adjustments or user serviceable parts within the docking station. Opening the docking station will void the product warranty
- Do not install equipment or route wires in the deployment path of any air bag, or where it may interfere with critical safety or operating controls of any vehicle.

POWER:

- The power input should be $15.0Vdc / 8 A (120W)$. The dock is meant to operate on 14.5 Vdc to 16 Vdc. Use a recommended power supply for the dock. Panasonic recommends using a 120W Lind Auto Adapter (Gamber-Johnson part#: 7300-0610) for this dock.
- Power must only be supplied to either the docking station, or directly to the tablet (cradles only), never both.
- DC-DC Power supply must comply with local jurisdictions.

WIRING:

- Gamber-Johnson does not recommend relying on a cigarette socket adaptor for powering vehicle docks. We recommend hard wiring the power adapter using a good clean ground direct from the vehicle battery neg(-) post, and pos(+) supply from a fused 12Vdc location also directly from the vehicle battery. All peripherals connecting to the docking station requiring external power should get power and ground from the same location as the dock.
- Visit www.precisionmounts.com/support/installation-user-guides.html for a copy of our general wiring and troubleshooting guide.

Proper Use and Care:

- Proper care and use of this product is critical to maximize safety and to prevent damage to the docking station and tablet.
- Do not store, place, or drag any object on top of the docking station.
- Visually inspect the docking station and tablet for any defect before using the dock or docking the laptop. Do not use if damaged.
- Any modifications made to the docking station could result in adverse performance and damage to the tablet and/or docking station and will void the warranty.
- Do not attempt to dock a computer or dock with wet contacts

Environmental: TESTED TO

- Storage: -40°C to 85°C (-40°F to 185°F)
- Operating: -30°C to 63°C (-22°F to 145°F)

PANASONIC SPECIFICATION

- 20°C to 60°C (-4°F to 140°F)
- 10°C to 50°C (14°F to 122°F)

SERVICING [ENTRETIEN]:

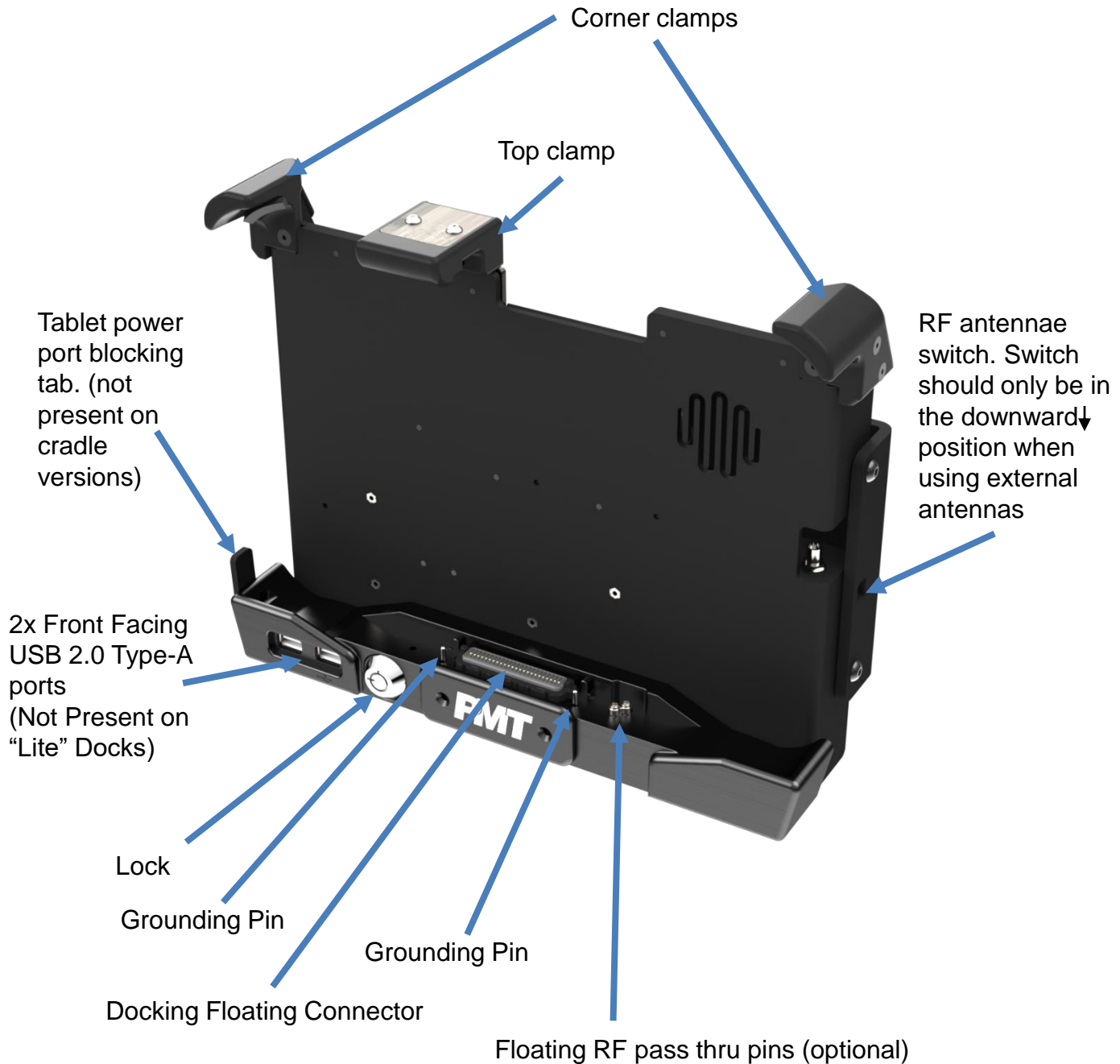
- If the dock does not work as intended, please contact Gamber-Johnson for troubleshooting or to schedule a service. *[Si le dock ne fonctionne pas comme prévu, contactez Gamber-Johnson pour le dépannage ou pour planifier un service.]*
- Servicing of the dock should be only done by authorized service center personnel. Unauthorized servicing of the dock will void its warranty. *[L'entretien du dock ne doit être effectué que par le personnel du centre de service autorisé. Un entretien non autorisé du dock annulera sa garantie.]*

Product Mounting Disclaimer

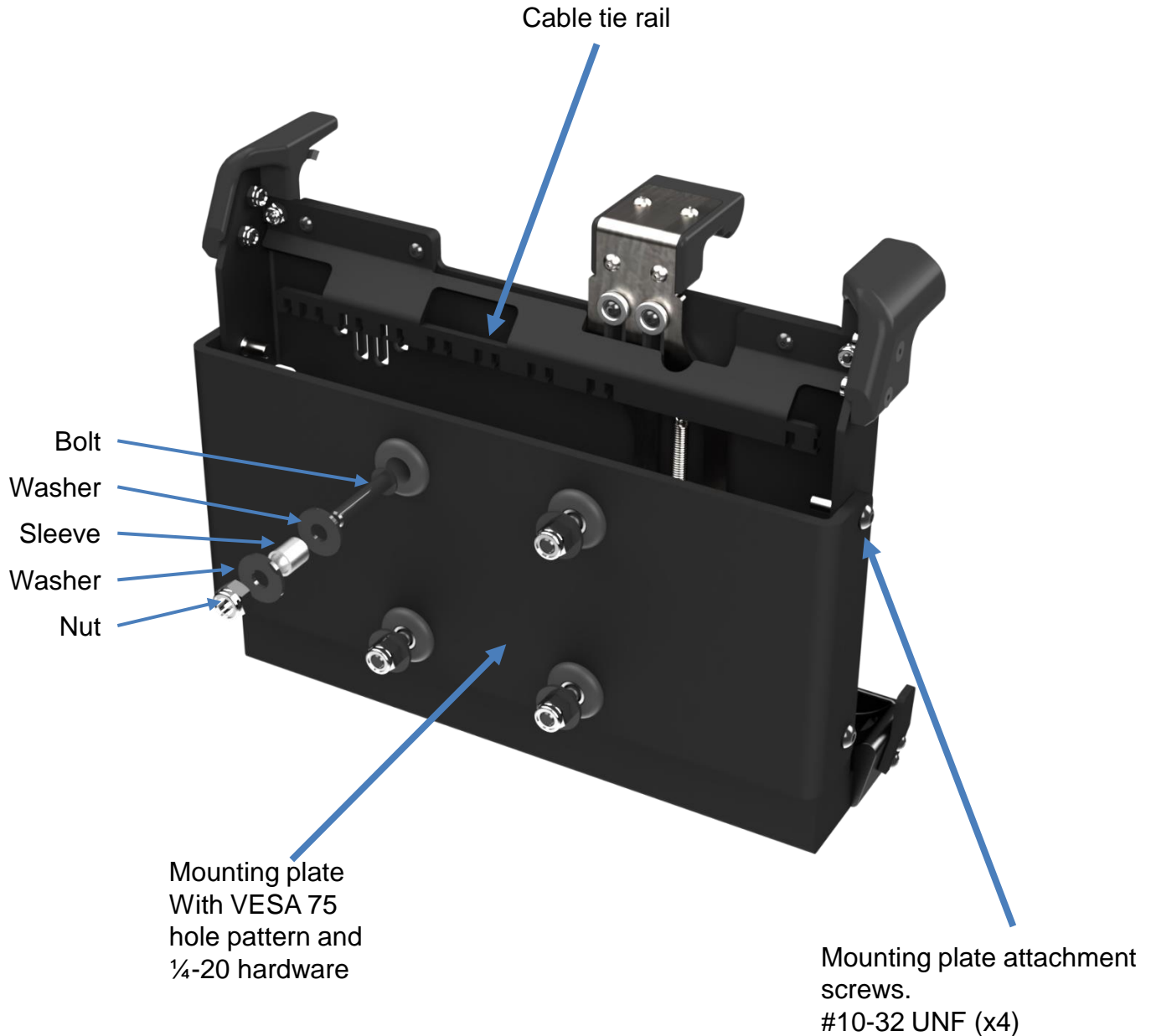
Gamber-Johnson Ltd are not liable under any theory of contract or tort law for any loss, damage, personal injury, special, incidental or consequential damages for personal injury or other damage of any nature arising directly or indirectly as a result of the improper installation or use of its products in vehicle or any other application. In order to safely install and use Gamber-Johnson products full consideration of vehicle occupants, vehicle systems (i.e., the location of fuel lines, brake lines, electrical, drive train or other systems), air-bags and other safety equipment is required. Gamber-Johnson specifically disclaims any responsibility for the improper use or installation of its products not consistent with original vehicle manufactures' specifications and recommendations, Gamber-Johnson product instruction sheets, or workmanship standards as endorsed through Gamber-Johnson policies and EULA.



DESCRIPTION OF PARTS



DESCRIPTION OF PARTS CONT'D



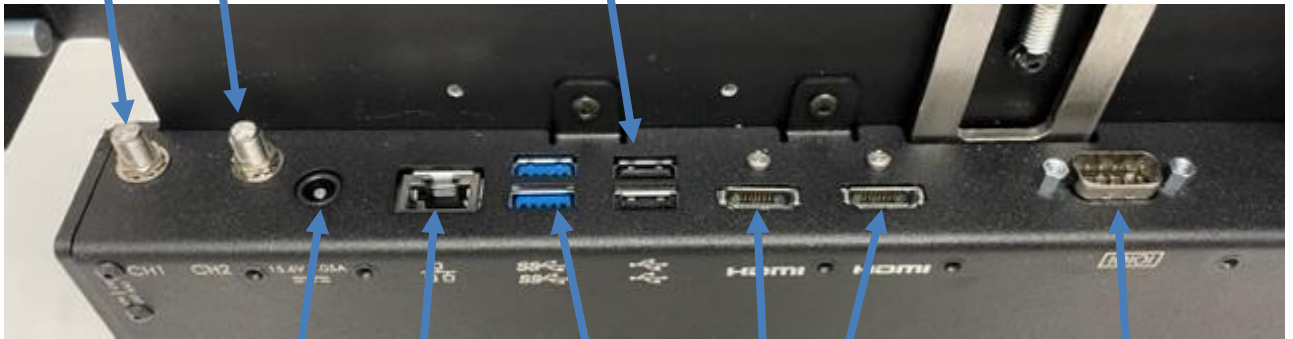
PORT IDENTIFICATION

RF Pass thru connectors (optional) (SMA)

CH 1

CH 2

USB 2.0 Type-A (x2)



Power in 15 Vdc

Ethernet RJ45
10/100/1000 M bps

USB3.2
5Gbps
Type-A
(x2)

HDMI (x2)
Note: Use of HDMI
cable with ferrite
bead is necessary
(Not Present on
"Lite" Docks)

Serial
RS-232

INSTALLATION

Step 1:

Using a 1/8" Allen/Hex key (wrench), remove the mounting plate from the dock.



Step 2:

Install mounting plate onto mounting infrastructure via the VESA 75 interface and the provided hardware. Be sure to orientate the plate in the correct position as the access hole for the RF switch must line up with the switch on the dock once installed. The included stainless steel collars should be placed inside of the rubber grommets with a washer each side of the grommet, and the mounting bolts passed through and tightened with the nut.



Step 3:

Connect all required wiring to the dock while utilizing plastic tie straps and the cable tie rail to secure cables/connections. Each cable connecting to the docking station should be secured via a tie strap before exiting the docking station.



Step 4:

Attach dock to mounting plate using the 4x 10-32 UNF button head screws provided



Tip: Visit our website to search for and review our "General wiring and troubleshooting guide" for further information.

DOCKING THE TABLET

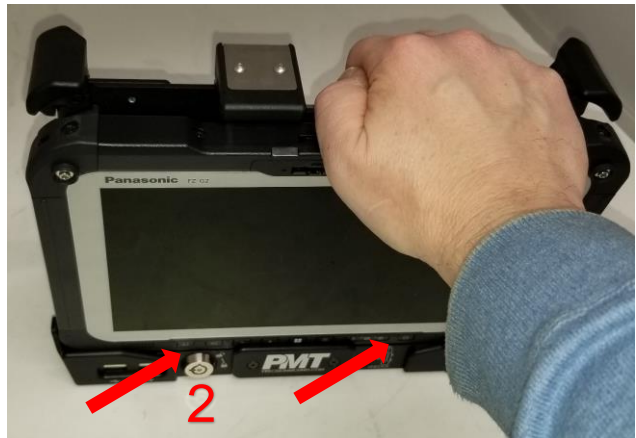
Step 1:

Ensure lock is in the unlocked position



Step 2:

Place tablet bottom edge first against the docking connector. Ensure the tablet is centered in the dock.



Step 3:

- Press the Middle of the Tablet DOWN against the Floating Connector, and
- With your fingers against the Back of the Dock at the Top, and your palm against the Tablet Front, **Squeeze** your hand. The top clamp will slide up and over the top of the Tablet. Ensure that the Top Clamp fully drops down over the front face of the tablet once in position. If excessive force is required, stop and check alignment and ensure dock is unlocked.



*Avoid holding the tablet in the top corners while docking to prevent potential pinch point with corner ears.

Step 4:

For additional security and theft deterrence, insert key and rotate lock to the locked position as shown.



UN-DOCKING THE TABLET

Step 1:

If previously locked, insert key and rotate lock to the unlocked position.



Step 2:

- a. Using your thumb, push Top Clamp up.
- b. Then pull the top of the tablet away from the dock.



Step 3:

Once clear of the Top Clamp, lift the tablet out and away from the dock.



Regulatory model: AS7.P222.102

Certifications and test standards:

EN ISO / IEC 17050-1:2010

CSA C22.2 NO. 62368-1

UL 62368-1

ICES-003(A) / CISPR 32 / EN 50498

ISO 10605

MIL-STD-810G: CHG1

RoHS 3 (2015/863)

Made in Canada

This device complies with Part 15 of the FCC Rules. Operation is subject to the following two conditions. (1) this device may not cause harmful interference, and (2) this device must accept any interference received, including interference that may cause undesired operation.

