



DELL

DOCKING STATIONS

FOR YOUR LAPTOP & TABLET



RUGGED. RELIABLE. RESPONSIVE.™



DELL LATITUDE 7030 RUGGED EXTREME TABLET DOCKING STATION

ITEM NUMBERS:

7160-1882-00 Lite Port
7160-1882-10 Full Port
7160-1883-00 Cradle
7160-1884-00 Tablet and Keyboard Cradle
7170-1119-00 Lite Port w LIND Auto Power Adapter
7170-1054-00 Lite Port w LIND 12-32V Isolated Power Adapter
7170-1054-10 Lite Port w LIND 20-60V Isolated Power Adapter
7170-1054-20 Lite Port w LIND 72-110V Isolated Power Adapter
7170-1119-10 Full Port w LIND Auto Power Adapter
7170-1055-00 Cradle w LIND 100W USB-C Auto Power Adapter
7170-1056-00 Tablet and Keyboard Cradle w LIND 100W USB-C Auto Power Adapter

- Compatible with the Dell Latitude 7030 Rugged Extreme tablet computer
- Accommodates the tablet's hand strap or magnet mount attachment
- Access to all tablet control buttons, ports, and scanner while the tablet is docked
- Docking connector gasket helps prevent moisture buildup when docked
- Downward-facing I/O ports; integrated cable strain relief and cable management system
- One-handed docking and release for efficient use all day long
- Keyed lock for theft deterrence
- Gamber-Johnson's rugged construction and reliability
- Composite design for reduced weight and durability
- VESA 75 mounting pattern with 1/4-20 mounting studs for easy mounting with Gamber-Johnson mounts and motion attachments
- Optional HDMI full port replication to connect a second display

CERTIFICATES & TESTING:

- MIL-STD-810H Operational and Non-Operational Vibration/Shock Testing
- Environmental: Humidity, Thermal Shock, High/Low Temperature - Storage/Operational
- Cycle Test: 30,000 cycles, Latch, Lock, and Docking Connector
- Electrostatic Discharge: ISO 10605
- Shock Crash Hazard: Test SAE J1455
- EMC Testing: EN 55032, EN50498
- RoHS, FCC, CE, UKCA



DELL LATITUDE 7030 RUGGED EXTREME TABLET VEHICLE DOCKING STATION by PMT

ITEM NUMBERS:

AS7.D922.100 Lite Port
AS7.D922.110 Full Port
AS7.D922.104 Cradle
AS7.D922.100-PS Lite Port with LIND Auto Power Adapter
AS7.D922.100-PSF1 Lite Port with LIND 20-60V Isolated Power Adapter
AS7.D922.110-PS Full Port with LIND Auto Power Adapter
AS7.D922.104-PS Cradle with LIND 100W USB-C Auto Power Adapter

- Compatible with the Dell Latitude 7030 Rugged Extreme tablet computer
- CNC aluminum construction offers rugged durability
- Ultra slim, low-profile design for minimal intrusion of operator space to maximize comfort and safety
- Ergonomic design for safety and usability
- Universal VESA 75 mounting pattern
- Floating docking connector for reliable connectivity
- Access to all tablet control buttons and ports while the tablet is docked
- Key lockable for added theft deterrence
- Upward facing ports with integrated cable management
- One handed operation
- Optional HDMI video out port for connecting an additional display (max. resolution 1920 x 1080)

CERTIFICATES & TESTING:

- MIL-STD-810-H
- Vibration & Shock per MIL-STD-810-H
- Cycle - Latch/Unlatch 30,000 cycles
- Shock-Crash Test - Simulates 30mph crash test
- Environmental - Humidity / Thermal Shock / Low Temp Storage / High Temp Storage
- EMC Testing - EN 50498 / CISPR 32 - Class B / ICES-0003
- FCC, CE, UKCA, RoHS



DELL LATITUDE 7230 RUGGED EXTREME TABLET VEHICLE DOCKING STATION

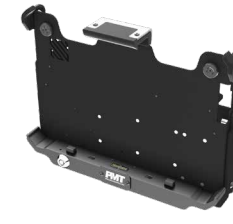
ITEM NUMBERS:

7160-1772-00 Lite Port, No RF
7160-1772-04 Lite Port, Quad RF
7160-1773-00 Cradle, No RF
7160-1773-04 Cradle, Quad RF
7160-1772-10 Full Port, No RF
7160-1772-14 Full Port, Quad RF
7160-1811-00 Tablet and Keyboard Cradle, No RF
7170-1118-00 Lite Port, No RF w LIND Auto Power Adapter
7170-1118-04 Lite Port, Quad RF w LIND Power Adapter
7170-1118-10 Full Port, No RF w LIND Power Adapter
7170-1118-14 Full Port, Quad RF w LIND Power Adapter
7170-0992-00 Cradle, No RF w LIND Power Adapter
7170-0992-04 Cradle, Quad RF w LIND Power Adapter
7170-1002 Tablet and Keyboard Cradle, No RF w LIND Auto Power Adapter

- Compatible with the Dell tablet model 7230
- Accommodates the tablet's hand strap or magnet mount attachment
- Access to all tablet control buttons and ports while the tablet is docked
- Downward-facing I/O ports; integrated cable strain relief and cable management system
- Spring loaded pogo connector for reliable connectivity in the most rugged environments
- Optional HDMI to connect a second display
- Optional QUAD RF pass through for additional connectivity
- Docking connector gasket provides additional water protection
- One-handed docking and release for efficient use all day long
- Keyed lock for theft deterrence
- Gamber-Johnson rugged construction and reliability
- Composite design for reduced weight and durability
- VESA 75 mounting pattern with 1/4-20 mounting studs for easy mounting with Gamber-Johnson mounts and motion attachments
- 3-Year Limited Warranty, Extended Warranty Program available

CERTIFICATES & TESTING:

- MIL-STD-810H Operational and Non-Operational Vibration/Shock Testing
- Environmental: Humidity, Thermal Shock, High/Low Temperature - Storage/Operational
- Cycle Test: 30,000 cycles, Latch, Lock, and Docking Connector
- Electrostatic Discharge: ISO 10605
- Shock Crash Hazard: Test SAE J1455
- EMC Testing: EN 55032, EN50498
- RoHS, FCC, CE, UKCA



DELL LATITUDE 7230 RUGGED EXTREME TABLET VEHICLE DOCK by PMT

ITEM NUMBERS:

AS7.D921.100 NO RF
AS7.D921.102 QUAD RF
AS7.D921.104 Cradle NO RF
AS7.D921.105 Cradle QUAD RF

- Compatible with Dell tablet model 7230
- Top-facing I/O ports: USB 3.1 Type-A (2), Ethernet, USB Type-C, Serial RS232
- Integrated cable restraint / cable management system
- Optional Quad RF Pass-Through (SMA)
- Extreme compact size preserves cabin space and ensures user safety
- CNC machined aluminum construction
- Auto-latch mechanism ensures tablet is latched when docked
- Simple, one-handed operation
- Flexible non-capture locking mechanism allows use with or without a key
- Allows easy access to the tablet's built-in stylus
- Available in no-electronics cradle version
- Tablet cooling fan ventilation slots
- 3-Year Limited Warranty

CERTIFICATES & TESTING:

- MIL-STD-810-H
- Vibration & Shock per MIL-STD-810-H
- Cycle - Latch/Unlatch 30,000 cycles
- Shock-Crash Test - Simulates 30mph crash test
- Environmental - Humidity / Thermal Shock / Low Temp Storage / High Temp Storage
- FCC, CE, UKCA, RoHS
- EMC Testing - EN 50498 / CISPR 32 - Class B / ICES-0003



DELL LATITUDE 12-14 RUGGED LAPTOP DOCKING STATION

ITEM NUMBERS:

7160-0882-00 NO RF
7160-0882-03 TRI RF
7160-0883-00 NO RF Cradle
7160-0883-03 TRI RF Cradle
7170-0551-00 KIT: NO RF Dock w LIND Power Adapter
7170-0551-03 KIT: TRI RF Dock w LIND Power Adapter

- Compatible with Dell models 5404/5414/5420/5424, 7404/7414/7424, 7204/7214, 5430/7330
- VGA, HDMI, USB 3.0 (3), Ethernet, RS232 Serial (2), Power Input
- Convenient user access to front-facing USB 2.0 and MIC/AUX ports
- Integrated cable restraint / cable management system
- Access to all computer control buttons when the computer is docked
- Guide hooks ensure proper alignment during docking
- Floating connector design ensures reliable operation
- Keyed lock for theft deterrence
- Optional RF for WiFi, GPS, and cellular
- Features OEM Dell electronics
- VESA 75mm mounting pattern
- Available in a kit bundled with LIND 90W auto power adapter
- Available in (no electronics) cradle version
- Steel and composite design, rugged construction for long-term durability
- 3-Year Limited Warranty
- Available Retrofit kit (7110-1385) to update older

CERTIFICATES & TESTING:

- ROHS, FCC, CE
- MIL-STD 810G Shock/Vibration
- SAE J1455 Crash Test
- Cycle Tested - Locking and Docking Mechanism
- Environmental Tested - High/Low Temperature, Humidity



DELL LATITUDE 12 RUGGED TABLET DOCKING STATION

ITEM NUMBERS:

7160-0840-00 NO RF
7160-0840-02 DUAL RF
7160-0881-00 NO RF Cradle
7170-0552-00 KIT: NO RF Dock w LIND Power Adapter
7170-0552-02 KIT: DUAL RF Dock w LIND Power Adapter

- Compatible with Dell tablet models 7202/7212/7220
- VGA, USB 3.0 (2), Ethernet, RS232 Serial, Display, Power Input, front-facing USB 2.0 and mic/AUX ports
- Integrated cable restraint / cable management system
- Access to all computer control buttons when the computer is docked
- Docking station accommodates the tablet stylus, card reader/scanner, and extended I/O module
- Easy one hand docking and release
- Keyed lock for theft deterrence
- Optional RF for WiFi and cellular
- Features OEM Dell electronics
- VESA 75mm mounting pattern
- Available in a kit bundled with LIND power adapter
- Available in (no electronics) cradle version
- Steel and composite design, rugged construction for long-term durability
- 3-Year Limited Warranty

CERTIFICATES & TESTING:

- ROHS, FCC, CE
- MIL-STD 810G Shock/Vibration
- SAE J1455 Crash Test
- Cycle Tested - Locking and Docking Mechanism
- Environmental Tested - High/Low Temperature, Humidity



NOTEPAD™ V UNIVERSAL CRADLE

ITEM NUMBERS:

7160-0250 Standard Clips
7160-0250-01 Tall Computer Clips
7160-0250-02 Zero Edge Clips
7160-0250-03 Cam Back Clips
7160-0402 Notepad V-LT
7160-0402-01 Notepad V-LT with Zero Edge Clips
7160-0402-02 Notepad V-LT with Tall Computer Clips
7160-0402-03 Notepad V-LT with Cam Back Clips

- Slim form design provides low mounting capability
- Special "flanged" side clip, provides superior strength, adjustable "one-size-fits-all" - fits most computers
- T-molded polycarbonate covers hold clips in place during installation
- Reversible front and back supports adjust to accommodate varying depths of computers
- Gusseted rear support brace for added restraint
- 90-degree wing turn closure latch with built-in heavy duty key lock (keyed alike)
- Fast initial size adjustment and quick computer insertion and removal
- Molded polycarbonate end caps ensure that the computer is level when in the cradle
- Sliding bottom mounting bar allows for multiple positions for offset capabilities when used with the Motion Attachment
- Available with CAM back clips for use with laptop computers that are shorter in depth and wider in width
- Available Notepad V-LT models for smaller laptops and tablets
- Can be used with optional accessories (Screen Support, LED Light and Microphone Clip)
- Limited Lifetime Warranty

CERTIFICATES & TESTING:

- SAE J1455 Crash Test



DELL LATITUDE 12 RUGGED TABLET - VEHICLE DOCK by PMT

ITEM NUMBERS:

AS7.D920.100 NO RF
AS7.D920.102 DUAL RF
AS7.D920.104 No Electronics Cradle

- Compatible with Dell tablet models 7202/7212/7220
- Top-facing I/O ports: VGA, Display, USB 3.0 (3), Ethernet, speaker/mic
- Easy access to front-mounted key lock, USB 2.0 and audio port
- Integrated cable restraint / cable management system
- Optional RF for WiFi and cellular
- Extreme compact size preserves cabin space and ensures user safety
- CNC machined aluminum construction
- Features OEM Dell electronics
- Auto-latch mechanism ensures tablet is latched when docked
- Compatible with tablets containing the kickstand and extended I/O modules
- Flexible non-capture locking mechanism allows use with or without a key
- Allows easy access to the tablet's built-in stylus
- Available in no-electronics cradle version
- 3-Year Limited Warranty

CERTIFICATES & TESTING:

- ROHS, CE
- MIL-STD 810G Shock/Vibration
- SAE J1455 Crash Test
- Environmental Tested – High/Low Temperature, Humidity



RETROFIT HOOK KIT FOR DELL LATITUDE RUGGED LAPTOP DOCKING STATION

ITEM NUMBER:

7110-1385

- A simple solution to quickly upgrade your fleet while saving installation time
- Compatible with Gamber-Johnson Dell Latitude 12-14 Rugged Laptop Docking Stations, models 7160-0882-XX and 7160-0883-XX
- Designed to modify previous versions (Rev "A"- "N") of Dell Latitude docking stations to accommodate the Dell Latitude 14 Rugged (Model 5430) and 14 Rugged Extreme (Model 7330) computers
- The hooks in this kit replace existing hooks on the docking station, once installed, the docking station will only accommodate the new 5430 and 7330 computer models.
- This solution is ideal for fleets that utilize Rev "A"- "N" docking stations and are upgrading computers to the Dell Latitude 5430 or 7330 models.



DELL LATITUDE 12 -14 RUGGED LAPTOP VEHICLE DOCK by PMT

ITEM NUMBERS:

AS7.D900.100 Advanced NO RF
AS7.D900.103 Advanced TRI RF
AS7.D900.104 No Electronics Cradle
AS7.D901.100 Rear Port Advanced NO RF
AS7.D901.103 Rear Port Advanced TRI RF

- Compatible with Dell models 5404/5414/5420/5424, 7404/7414/7424, 7204/7214, 5430/7330
- Advanced port replication includes: VGA, HDMI, Serial RS232 (x2), Ethernet, USB 3.0 (x3)
- Convenient user access to side-facing status light indicator, USB 2.0 and speaker/mic ports
- Integrated cable restraint / cable management system
- Optional RF for WiFi, GPS, and cellular
- Extreme compact size preserves cabin space and ensures user safety
- CNC machined aluminum construction
- Auto-latching feature for operator safety
- Floating connector design ensures reliable operation
- Convenient, front-located push-to-release latch
- Flexible non-capture locking mechanism allows use with or without a key
- Features OEM Dell electronics
- Available in no-electronics cradle versions
- Available in rear facing port versions
- 3-Year Limited Warranty

CERTIFICATES & TESTING:

- ROHS, FCC, CE
- MIL-STD 810G Shock/Vibration
- SAE J1455 Crash Test
- Cycle Tested – Locking and Docking Mechanism
- Environmental Tested – High/Low Temperature, Humidity



DELL LATITUDE RUGGED LAPTOP DOCKING STATION SCREEN SUPPORT

ITEM NUMBER:

7110-1213

- Black powdercoat finish for maximum corrosion resistance.
- Padding on support keeps your computer safe from scratches.
- Can be mounted on either the left or right side of the computer.
- Heavy gauge steel construction for long-term durability.
- Easy to install
- Limited lifetime warranty



NOTEPAD™ TOUCH UNIVERSAL TABLET CRADLE

ITEM NUMBERS:

7160-1299-00 NotePad Touch
7160-1299-10 NotePad Touch XL

- Patented "slam latch" technology for easy one-handed operation
- Optional keyed lock for theft deterrence
- Height, Width, and depth adjustable to accommodate almost any size tablet computer
- Two cradle sizes available:
 - NotePad Touch can be adjusted to fit tablets with the following dimensions:
 - Length: 10.0 - 13.0 in / 25.4 - 33.0 cm
 - Height: 7.0 - 9.7 in / 17.7 - 24.6 cm
 - Depth: 0.28 - 1.12 in / 0.71 - 2.8 cm
 - NotePad Touch XL can be adjusted to fit tablets with the following dimensions:
 - Length: 7.8 in - 10.9 in / 19.8 - 27.6 cm
 - Height: 4.5 in - 7.3 in / 11.4 - 18.5 cm
 - Depth: 0.28 in - 1.12 in / 0.71 - 2.8 cm
- Composite/aluminum design for reduced weight and extended durability
- VESA 75 and AMPS mounting patterns
- Limited Lifetime Warranty

CERTIFICATES & TESTING:

- MIL-STD 810G Shock
- SAE J1455 Crash Test