



INSTALLATION INSTRUCTIONS

Product

7160-1657

2021+ 1500 Ram Top of Dash

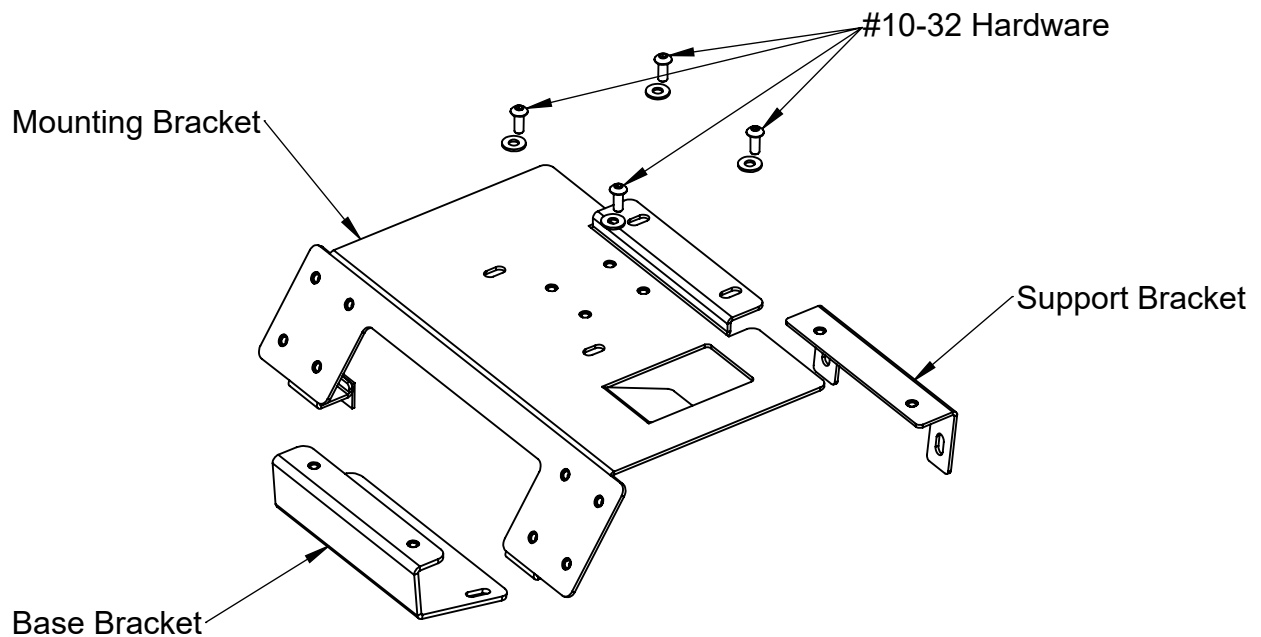
Revision

Rev A

Form

INST-1073

Printing Spec: PS-001



These instructions cover the installation of the 7160-1657 Gamber-Johnson Ram Series Small Devices Top of Dash in 2021+ 1500

Product Mounting Disclaimer

Gamber-Johnson is not liable under any theory of contract or tort law for any loss, damage, personal injury, special, incidental or consequential damages for personal injury or other damage of any nature arising directly or indirectly as a result of the improper installation or use of its products in vehicle or any other application. In order to safely install and use Gamber-Johnson products full consideration of vehicle occupants, vehicle systems (i.e., the location of fuel lines, brake lines, electrical, drive train or other systems), air-bags and other safety equipment is required. Gamber-Johnson specifically disclaims any responsibility for the improper use or installation of its products not consistent with original vehicle manufactures specifications and recommendations, Gamber-Johnson product instruction sheets, or workmanship standards as endorsed through the Gamber-Johnson Certified Installer Program.

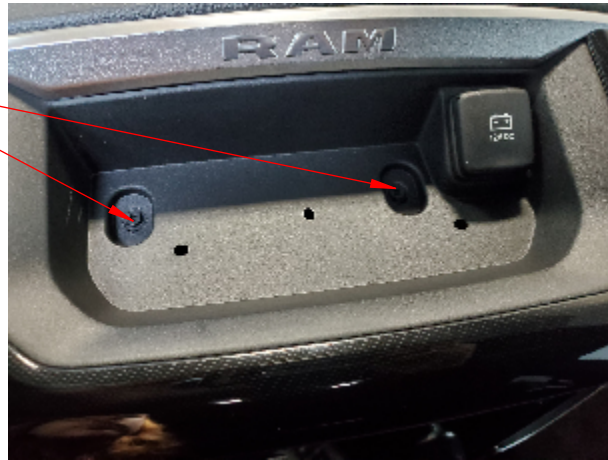
© Copyright 2021 Gamber-Johnson, LLC

If you need assistance or have questions, call Gamber-Johnson at 1-800-456-6868

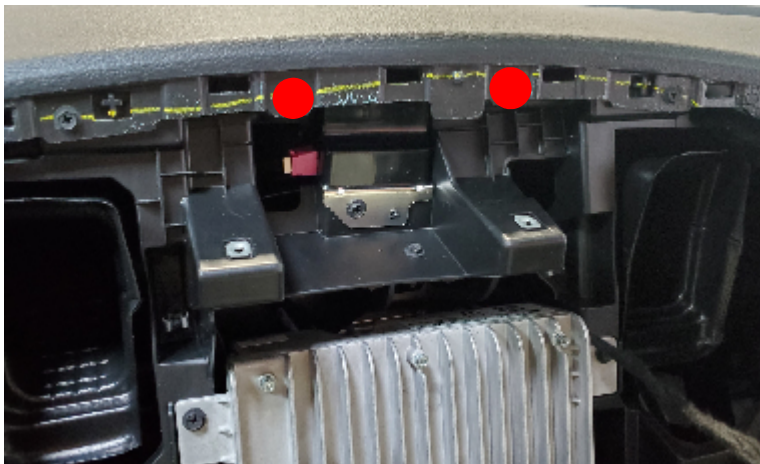
To Install:

1. Remove pocket liner in top pocket. Remove (2) screws in pocket with phillips head screw driver. Set screws aside, they will be added back in later.

Remove (2) screws



2. Remove entire front panel. Remove (2) inner most screws with a phillips head screw driver. Loosely attach support bracket with those same (2) screws. Line up front panel without fully snapping back in. Adjust support bracket to sit just on top. Fully tighten screws holding support bracket. Fully reattach front panel making sure to snap all side back in.



3. Attach base on to _____ with screws taken out in step 1. Make sure to pull base as far forward as slots allow.



4. Loosely attach mounting bracket with (4) #10-32 hardware provided, making sure to align slots with the holes in both support and base brackets. Push plate fully towards the back and tighten all screws.

