



INSTALLATION INSTRUCTIONS

<u>Product</u> Zirkona Mounting System	<u>Revision</u> REV. I	<u>Form</u> INST-494 Printing Spec: PS-001
--	----------------------------------	---

These general instructions are intended to cover most of the components of the Zirkona product line.

⚠Warning!

-Always apply thread locker on all M20 threads of the Zirkona product line. Loctite EA 9460 or EA 9461 EPOXY is the recommended thread locker for all these threaded joints.

-Do not exceed maximum payload weight. See charts below:

	<u>Dynamic load</u>	<u>Static load</u>
Small Joiners (7110-1234, -1237)	3 lbs. (1.4kg)	22 lbs. (10kg)
Medium Joiners (7110-1235, -1222, -1259, -1304)	6 lbs. (2.8kg)	33 lbs. (15kg)
Large Joiners (7110-1236, -1260)	11 lbs. (5kg)	55 lbs. (25kg)

*Extension tubes will lower the overall payload rating of the mount. The longer the extension, the lower the maximum payload of the mount. As a general rule, lower the maximum payload 20% for every 50mm of extension (Ex: 100mm extension = reduces the payload by 40%)

-The suction cup bases require a smooth flat surface to affix to. Both the surface and the rubber of the base should be cleaned with water and/or a mild cleaner. Press the base hard against the surface and pull down the locking lever. Repeat this procedure at least once a month.

Pat.: www.gamberjohnson.com/patents <<http://www.gamberjohnson.com/patents>>

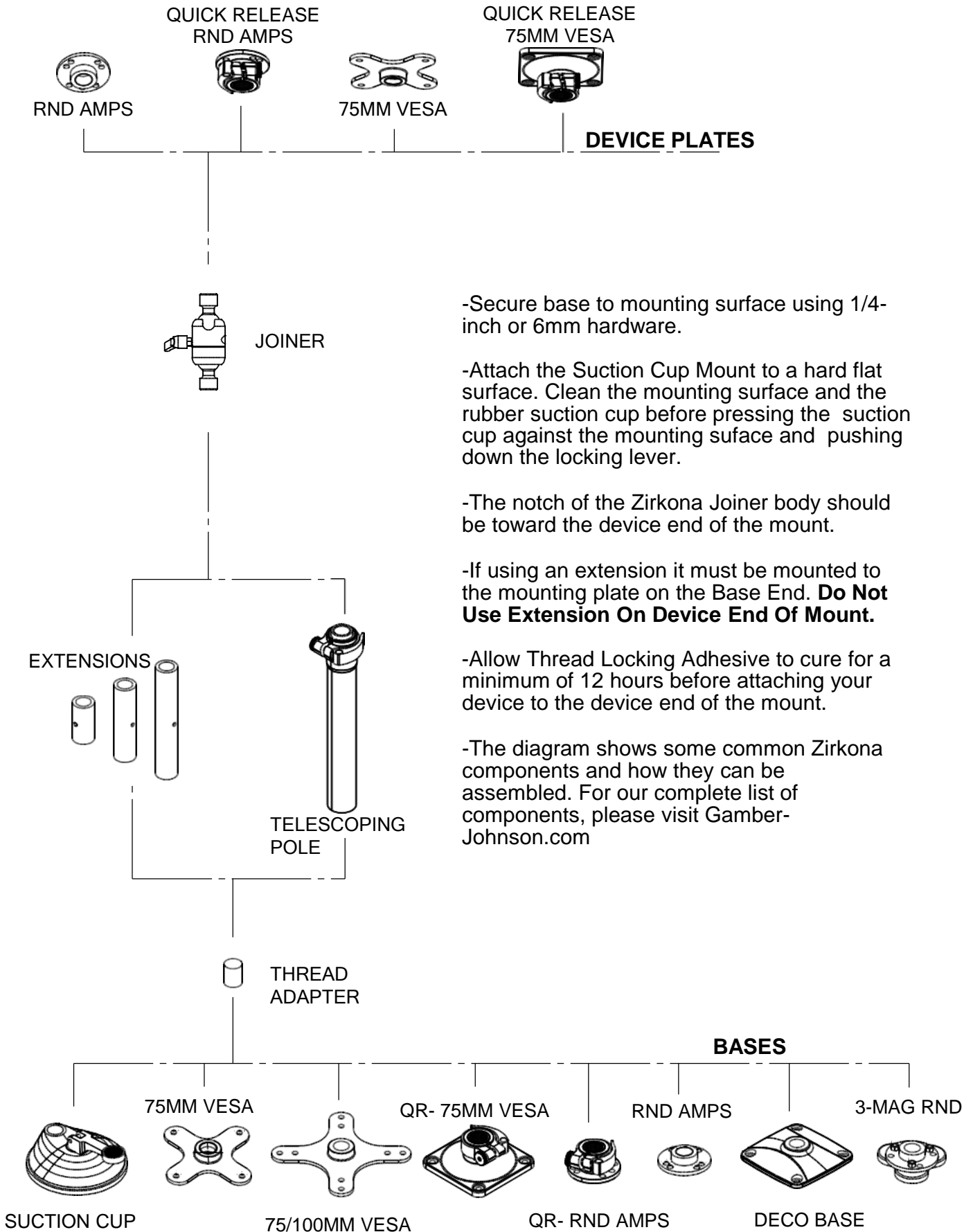
Product Mounting Disclaimer

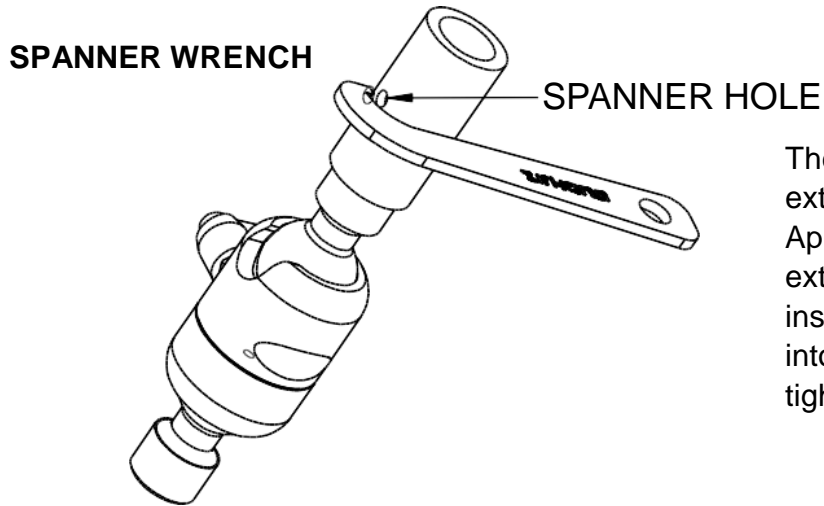
Gamber-Johnson is not liable under any theory of contract or tort law for any loss, damage, personal injury, special, incidental or consequential damages for personal injury or other damage of any nature arising directly or indirectly as a result of the improper installation or use of its products in vehicle or any other application. In order to safely install and use Gamber-Johnson products full consideration of vehicle occupants, vehicle systems (i.e., the location of fuel lines, brakes lines, electrical, drive train or other systems), air-bags and other safety equipment is required. Gamber-Johnson specifically disclaims any responsibility for the improper use or installation of its products not consistent with the original vehicle manufactures specifications and recommendations, Gamber-Johnson product instruction sheets, or workmanship standards as endorsed through the Gamber-Johnson Certified Installer Program.

© Copyright 2017 Gamber-Johnson, LLC

If you need assistance or have questions, call Gamber-Johnson at 1-800-456-6868

Use of the Zirkona product line.



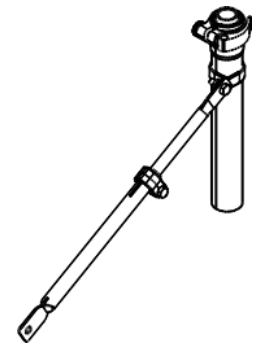


The spanner wrench is used to tighten extension tubes onto the joiner bodies. Apply epoxy thread locker EA 9460 on external and internal M20 threads, then insert the hook end of the spanner wrench into the hole of the extension tube to tighten the joint.

ACCESSORIES

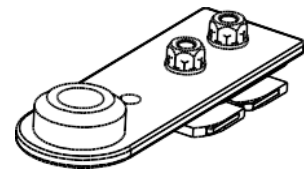
SUPPORT BRACE (7160-1340 / 7160-1341)

This is used with 7110-1230 Telescoping Pole to help stabilize payloads.



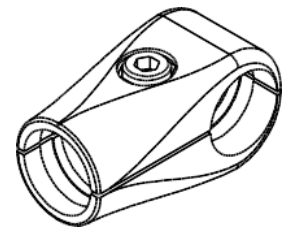
SEAT MOUNT (7110-1229)

Attaches to the passenger seat rail for a secure anchor point for any Zirkona mount.



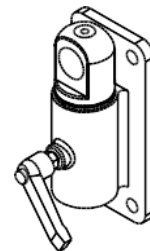
SLEEVE MOUNT (17467)

Mounts directly to extension tubes to create a second attachment point.



WALL MOUNTS (7110-1227)

Create swing-arm articulation by pairing with the thread adapter and extension tube.



THREADED PIVOT PIN (18834)

Change the orientation 90 degrees of any M20 threaded socket with this pivot pin.





INSTALLATION INSTRUCTIONS

Product

7160-1856

ZEBRA TC22 / TC27 CRADLE

Revision

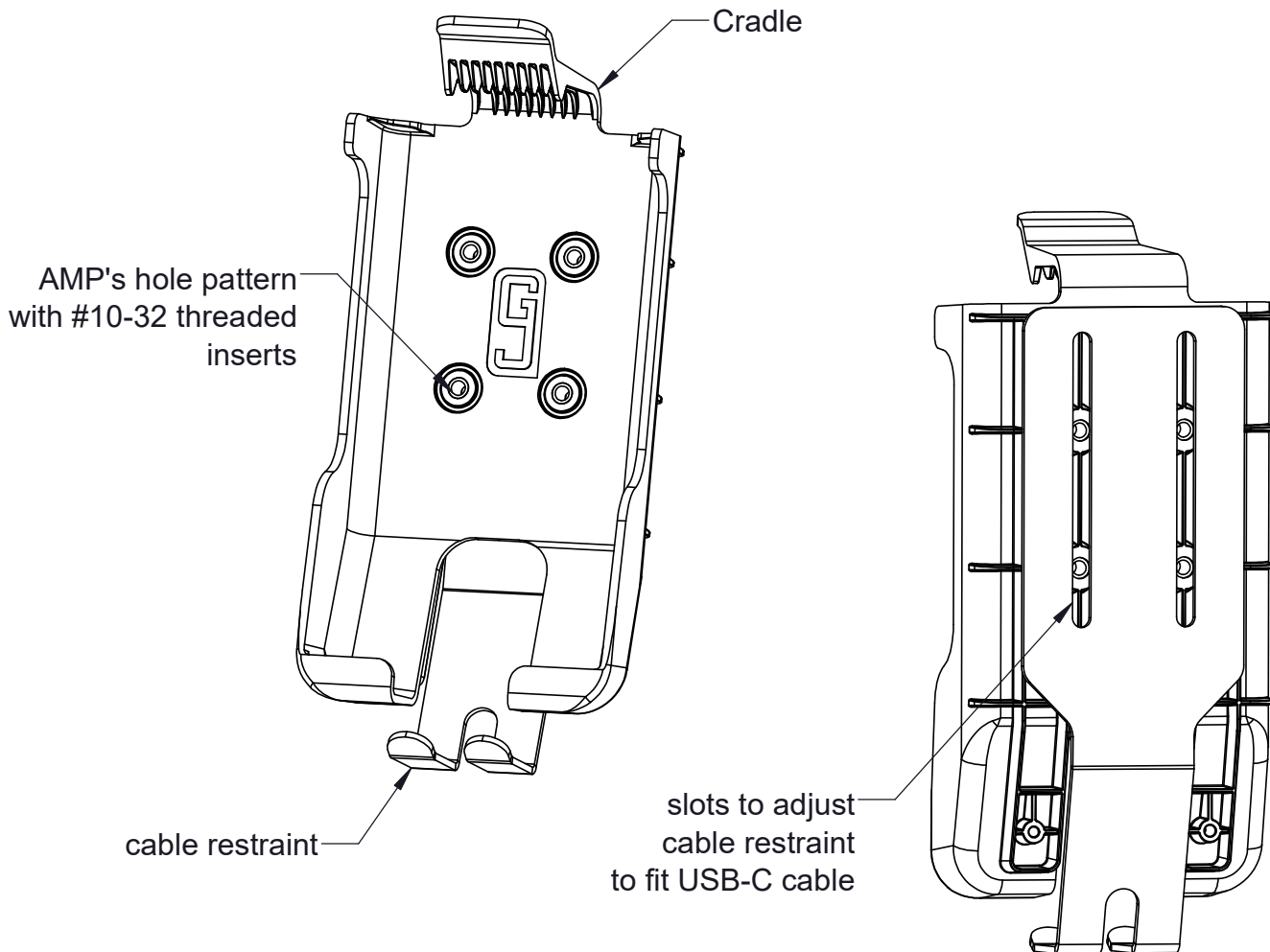
Rev A

Form

INST-1133

Printing Spec: PS-001

This instruction sheet is for the Zebra TC22/TC27 cradle only. The cradle is designed to hold a Zebra TC22 or TC27 handheld computer only. The 7160-1856 will not work with older TC2x devices. For instructions on features, set-up, and operation of the Zebra TC22/TC27 handheld computer, please refer to the manual provided by Zebra with the computer.



Product Mounting Disclaimer

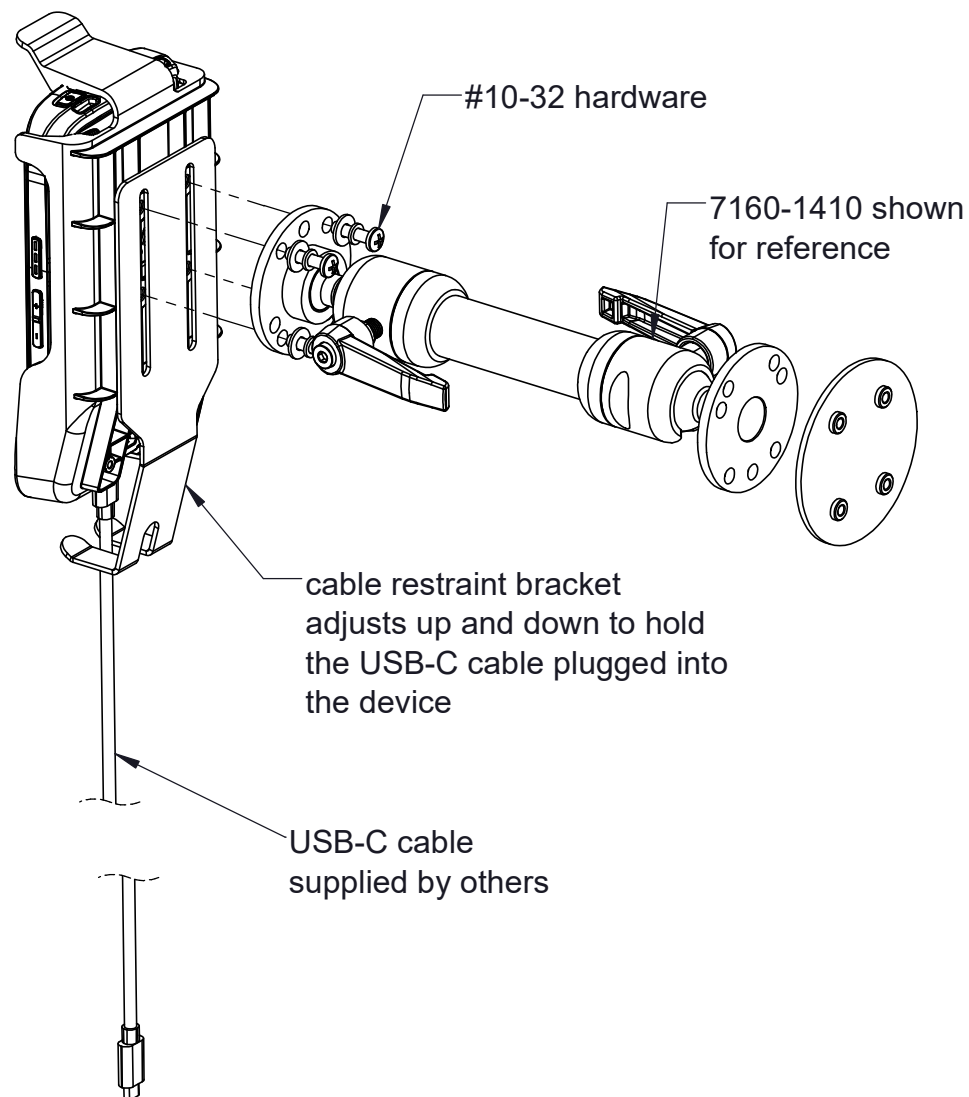
Gamber-Johnson is not liable under any theory of contract or tort law for any loss, damage, personal injury, special, incidental or consequential damages for personal injury or other damage of any nature arising directly or indirectly as a result of the improper installation or use of its products in vehicle or any other application. In order to safely install and use Gamber-Johnson products full consideration of vehicle occupants, vehicle systems (i.e., the location of fuel lines, brake lines, electrical, drive train or other systems), air-bags and other safety equipment is required. Gamber-Johnson specifically disclaims any responsibility for the improper use or installation of its products not consistent with original vehicle manufactures specifications and recommendations, Gamber-Johnson product instruction sheets, or workmanship standards as endorsed through the Gamber-Johnson Certified Installer Program.

© Copyright 2023 Gamber-Johnson, LLC

If you need assistance or have questions, call Gamber-Johnson at 1-800-456-6868

Attaching the cradle to a mount:

1. Attach a mount like the Gamber-Johnson 7160-1410 (shown below) to the cradle with the 3/4" long #10 machine screws, split lock and flat washers from the hardware bag supplied with the cradle. Leave the screws loose so the cable restraint can be adjusted up and down.
2. Adjust the cable restraint so it is lightly touching the USB-C power cable (supplied by others) when inserted into the bottom of the TC22/TC27 handheld computer. The cable should not bind with the cable restraint when inserting or removing the computer from the cradle.
3. Tighten the screws inserted in step 1 to hold the cradle with the cable restraint in place on the end of the mount.



Inserting the device into the cradle:

1. If you are using a USB-C cable to charge the device, the USB-C cable needs to be inserted into the bottom of the device before inserting the device into the cradle.
2. Insert the bottom of the device into the bottom of the cradle. If you have a USB-C cable inserted, the cable needs to go between the cable restraint fingers on the bottom of the cradle. (Ref. images 1 & 2)
3. Rotate the top of the device into the cradle. The top latch will flex upward when the device is pushed into the cradle. (Ref. images 3 & 4)
4. To remove the device, push upward on the top latch and pull outward on the device. (Ref. images 5 & 6)
5. Note: the USB-C cable will come out with the device. Remove the cable from the bottom of the device by hand. Pulling the device outward to reach the cables limit, could damage the cable or the device.

1



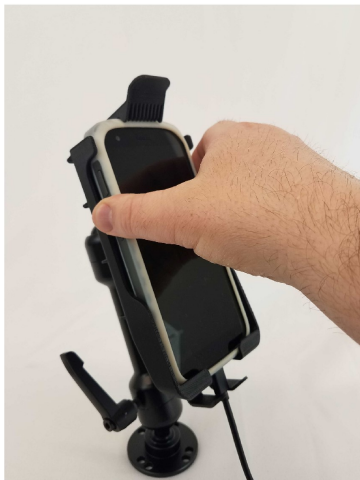
2



3



4



5



6

