



**RUGGED.  
RELIABLE.  
RESPONSIVE.**

# UNIVERSAL USB-C DOCKING STATION

Experience unmatched compatibility, convenience, and security

Gamber-Johnson's cutting-edge Universal USB-C Docking Station pairs seamlessly with InfoCase-compatible rugged cases, delivering a versatile mobile docking experience across various iPad models and other USB-C devices. Engineered for the modern mobile professional, this docking station ensures your device stays charged, operational, and secure—whether in-vehicle, at a point-of-sale, or on the go.

WEIGHT	HEIGHT	WIDTH	DEPTH
0.9 lbs / 0.4 kg	9.6 in / 24.38 cm	5.2 in / 13.2 cm	1.9 in / 4.82 cm

## COMPATIBILITY

Use with InfoCase Docking Station Cases for compatibility with:

- iPad 10th generation (10.9") – Case part number 7300-0718
- iPad Pro 11" 1st - 4th generation, iPad Air 4th 5th and NEW iPad Air 11 – Case part number 7300-0719
- iPad Pro 12.9" 3rd - 6th generation and NEW iPad Air 13 – Case part number 7300-0720

## CERTIFICATES & TESTING

- MIL STD 810H Non-Operational
- ASTM Operational
- Environmental: Humidity, Thermal Shock, High/Low Temperature – Storage/Operational
- Cycle Test: 10,000 cycles, Latch, Lock
- Electrostatic Discharge: ISO 10605
- Shock Crash Hazard: Test SAE J1455
- EMC Testing: EN 55032, EN 50498
- RoHS, FCC, CE, UKCA

## RECOMMENDED SOLUTIONS

- Rugged Lite Keyboard (7160-1449-00)
- Rugged Lite Backlit Keyboard (7160-1683-00)
- Lind Power Supply Mount (7160-0539)
- Lind USB-C Power Adapter (7300-0717)



## FEATURES

- **Docking Compatibility Using InfoCase Cases:** Safeguard your device against daily wear while ensuring easy docking.
- **USB-C Powered Docking Station:** Enjoy seamless charging and data transfer with efficient USB-C power.
- **45W Device Fast Charging:** Minimize downtime with rapid charging for your iPad or other devices.
- **7W USB-A Peripheral Charging:** Efficiently power your additional devices and accessories.
- **Dual USB-A Port Replication:** Connect keyboards, printers, scanners, and more to boost your productivity.
- **Integration Through Native device USB-C Port:** Streamline your setup with minimal cable clutter.
- **Keyed Lock for Theft Deterrence:** Protect your device and data with enhanced security, perfect for shared environments.
- **Mount in Portrait or Landscape Orientation:** Adjust your view to fit your workflow needs with flexible mounting options.
- **Gamber-Johnson's Adapter Bracket:** Center larger devices effortlessly when mounted in landscape.
- **Fully Tested for In-Vehicle Environment:** Designed to withstand challenging conditions, perfect for mobile professionals.

# UNIVERSAL USB-C DOCKING STATION

## PORT REPLICATION

Power Input: 12 Vdc  
5/9/12/15/20V at up to 60W

(2) USB 3.2, 5VDC (4.6-5.3V)  
@ 1.5A (5GBPS)



## PRODUCT SELECTION

PRODUCT NUMBER	DESCRIPTION	DEVICE COMPATIBILITY	POWER ADAPTER INCLUDED
7160-2019-00	Cradle Only (no electronics)	—	No
7160-1993-00	Universal USB-C Docking Station	—	No
7300-0720	InfoCase Rugged Docking Case for iPad Pro 12.9"	iPad Pro 12.9" (Gen 3-6)	No
7300-0719	InfoCase Rugged Docking Case for iPad Pro 11"	iPad Pro 11" (Gen 1-4), iPad Air (Gen 4-5)	No
7300-0718	InfoCase Rugged Docking Case for iPad 10.9"	iPad 10.9" (10th Gen)	No
7170-1122	KIT: Universal USB-C Docking Station + InfoCase Rugged Case for iPad 10.9"	iPad 10.9" (10th Gen)	No
7170-1138	KIT: Universal USB-C Docking Station + InfoCase Rugged Case for iPad 10.9" with Lind Power Supply	iPad 10.9" (10th Gen)	Yes
7170-1123	KIT: Universal USB-C Docking Station + InfoCase Rugged Case for 11" iPad	iPad Pro 11" (Gen 1-4), iPad Air (Gen 4-5)	No
7170-1139	KIT: Universal USB-C Docking Station + InfoCase Rugged Case for 11" iPad with Lind Power Supply	iPad Pro 11" (Gen 1-4), iPad Air (Gen 4-5)	Yes
7170-1124	KIT: Universal USB-C Docking Station + InfoCase Rugged Case for 12.9" iPad	iPad Pro 12.9" (Gen 3-6)	No
7170-1140	KIT: Universal USB-C Docking Station + InfoCase Rugged Case for 12.9" iPad with Lind Power Supply	iPad Pro 12.9" (Gen 3-6)	Yes



## Rugged Docking Cases for iPad

Elevate your device protection with superior durability and functionality for your iPad in any environment. The Rugged Docking Case ensures your iPad is secure, accessible, and more productive than ever with built-in ergonomic features and the ability to seamlessly switch from in-vehicle docking to on-the-go use.

### iPad 10.9" (Gen 10)

InfoCase Part #: 7300-0718

List Price: \$69.99

### iPad Pro 11" (Gen 1-4) and iPad Air (Gen 4-5)

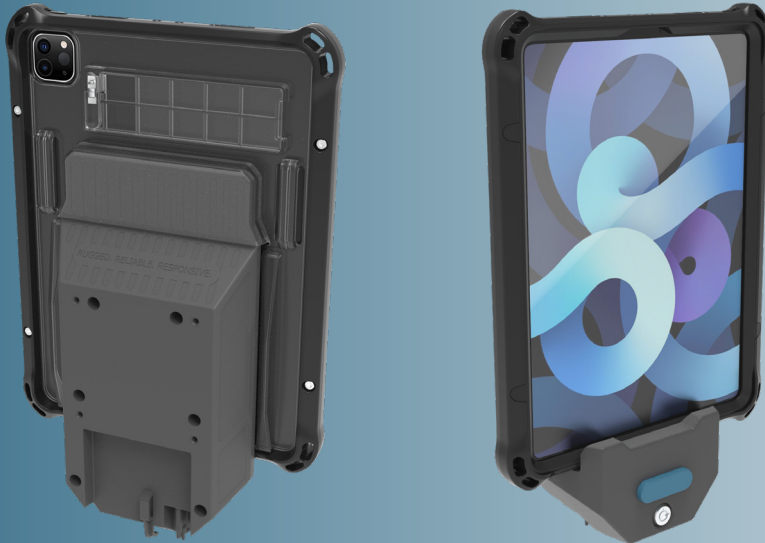
InfoCase Part #: 7300-0719

List Price: \$69.99

### iPad Pro 12.9" (Gen 3-6)

InfoCase Part #: 7300-0720

List Price: \$79.99



### Features:

- Integrated elastic hand strap
  - provides increased ergonomics
  - minimizes loss and drops
- Integrated friction resistant kickstand
- MIL-STD-810H drop tested
- Securely fashioned with 4x Hex screws
- Corner anchor points
  - facilitate mobility bundle or user harness for hands-free carrying
- Compatible with Gamber-Johnson iPad Docking Station

### Compatible Accessories:

- Mobility Bundle (FM-TABMBDDL-1)
- User Harness Kit (FM-USHRNMINI-KIT)

