

MATERIAL HANDLING



RUGGED. RELIABLE. RESPONSIVE.

SECURE YOUR ASSETS WITH A NAME YOU CAN TRUST

Gamber-Johnson is the global leader in equipment mounting products — driven by our mission of “supporting technology to help save the world.” We manufacture components and systems for every mounting solution, all meticulously designed to be rugged, reliable, and responsive. Gamber-Johnson is a trusted name in the industry; long known as the go-to partner for major rugged computer OEMs. As a pioneer in design innovation — receiving numerous awards and accolades as an industry leader — Gamber-Johnson has been the preferred choice for decades.

Harness the power of Gamber-Johnson’s laser-like focus on innovation with the perfect mounting solution for your lift vehicle.



MOUNTING SOLUTIONS FOR EVERY LIFT VEHICLE

Secure your tablets and equipment with our superior mounting solutions, for ultimate peace of mind. We offer a wide range of turnkey solutions that are configurable for your material handling vehicle’s specific make and model. Our ergonomic solutions enhance driver efficiency, reduce installation time, speed up operations, and improve overall workplace safety. To narrow down the best solution for your fleet begin by asking yourself these five important questions:

1. WHAT DEVICE IS BEING MOUNTED?

Identifying your device ensures that you get the correct dock or cradle to support your specific need and desired connectivity.

2. WHAT MODEL VEHICLE IS THE DEVICE BEING MOUNTED TO?

Knowing the make and model of your vehicle will allow us to recommend the best location and corresponding product needed to mount your device.

3. WHAT IS THE CAB TYPE?

Determine whether it is an open or enclosed cab.

4. WHAT IS THE VEHICLE’S VOLTAGE?

By knowing the voltage or power requirement of your lift vehicle we can ensure that you get the appropriate power supply for your specific need.

5. WHAT ACCESSORIES ARE BEING MOUNTED?

Understanding your accessory needs will allow us to build the best material handling solution for your team.



CRADLES AND DOCKING STATIONS

Secure your tablets and other devices with a Gamber-Johnson cradle or docking station. Cradles keep your device safe and secure without port access, while docking stations replicate the device’s ports for easy and secure access. Either way - we have a solution that will meet your needs in the most secure, ergonomic configuration possible.



F110 G6

- ITEM NUMBERS:**
7160-1584-00 Dock, No RF
7160-1584-03 Dock, Tri RF
7160-1642-00 Cradle, No Electronics
7160-1642-03 Cradle Tri RF No Electronics
- Compatible with G6 F110 tablet and all previous versions
 - One-hand docking and release for efficient use all day long
 - Downward-facing I/O ports; cable strain relief and cable management system
 - Accommodates mag strip reader and hand strap without shoulder strap attachment (sold separately)
 - Floating POGO pin style docking connector for reliable connectivity even in extreme environments
 - Access to all tablet control buttons and ports while the tablet is docked
 - Keyed lock for theft deterrence
 - VESA 75mm mounting pattern
 - 3-Year Limited Warranty



ZX10

- ITEM NUMBERS:**
7160-1676-00 Cradle, No RF
7160-1676-03 Cradle, Tri RF
7160-1675-00 Dock, No RF
7160-1675-03 Dock, Tri RF
- Compatible with Getac ZX10 tablet computer
 - Docking station accommodates the tablet’s card reader, extended battery, hand strap, stylus, barcode reader, and hard carry handle
 - Access to all tablet control buttons and ports while the tablet is docked
 - Docking connector gasket provides additional water resistance and protection
 - Downward-facing powered dual USB ports (1.5A ea); integrated cable restraint system
 - Floating docking connector for reliable connectivity in rugged environments
 - One-hand docking and releaseKeyed lock for theft deterrence
 - VESA 75mm mounting pattern
 - 3-Year Limited Warranty



ZX80

- ITEM NUMBERS:**
7160-1936-00 ZX80 Dock, No RF
7160-1936-03 ZX80 Dock, Tri RF
7160-1937-00 ZX80 Cradle, No RF
7160-1937-03 ZX80 Cradle, Tri RF
- Getac certified electronics
 - Slim profile takes up minimal mounting space
 - Built-in stylus holder provides convenient storage and access for stylus tools
 - Docking station accommodates the ZX80 tablet’s extended battery and 2-point hand strap accessories
 - Patented slam-latch system allows for easy, one-handed docking/undocking
 - Keyed lock for theft deterrence
 - Composite design for reduced weight and durability
 - VESA 75mm mounting pattern for compatibility with a variety of Gamber-Johnson motion attachments
 - Optional Tri RF (SMA) pass-through
 - 3-year limited warranty



A140

- ITEM NUMBERS:**
7160-1246-00 Dock, No RF
7160-1246-03 Dock, Tri RF
7160-1247-00 Cradle (No electronics), No RF
7160-1247-03 Cradle (No electronics), Tri RF
- Designed for the Getac A140 tablet computer
 - Getac certified & Getac certified electronics
 - Docking station design accommodates rotating hand strap (sold separately)
 - Designed with rounded edges to enhance personal safety
 - Composite/aluminum design for reduced weight and durability
 - Access to all tablet control buttons and ports while tablet is docked
 - Upward-facing I/O ports; integrated cable strain relief and cable management system
 - Floating docking connector for reliable connectivity in the most rugged environments
 - Keyed-alike lock for theft deterrence
 - Easy to use one-handed operation:
 - Insert bottom of computer into the docking station, push top of computer against latchlever until latch engages
 - To remove, push up on latch-button with thumb to disengage and pull computer out of the docking station
 - VESA 75 mm mounting pattern
 - MIL-STD 810G shock/vibration, RoHS, FCC, and SAE J1455 crash certifications
 - 3-Year Limited Warranty



UX10

- ITEM NUMBERS:**
7160-1813-00 Dock No RF
7160-1813-03 Dock, Tri RF
7160-1815-00 Cradle, No RF
7160-1815-03 Cradle, Tri RF
- Designed for the Getac UX10 tablet computer
 - Getac Certified
 - Accommodates the rotating hand strap with the extended battery, or the optional hard handle, RFID reader, smart card reader, and mag stripe reader. (sold separately)
 - Downward-facing I/O ports; integrated cable strain relief and cable management system
 - Floating POGO docking connector for reliable docking activation
 - Docking tabs align tablet during insertion
 - Designed with rounded edges to enhance personal safety
 - Composite/aluminum design for reduced weight and durability
 - Keyed lock for theft deterrence
 - Easy to use one-handed operation:
 - Insert bottom of computer into docking station, push top of computer against latch button until latch engages
 - To remove, push up on latch-button with thumb to disengage and pull computer out of docking station
 - VESA 75 mm mounting pattern
 - MIL-STD 810G shock/vibration, RoHS, FCC, CE, and SAE J1455 crash certifications
 - 3-Year Limited Warranty



K120

- ITEM NUMBERS:**
7160-1084-00 Dock, No RF
7160-1084-03 Dock, Tri RF
7160-1085-00 Cradle, No RF
7160-1085-03 Cradle, Tri RF
- Designed for the Getac K120 tablet computer
 - Getac certified
 - Accommodates rotating hand strap (sold separately)
 - Designed with rounded edges to enhance personal safety
 - Composite/aluminum design for reduced weight and durability
 - Access to all tablet control buttons and ports while tablet is docked
 - Upward-facing I/O ports; integrated cable strain relief and cable management system
 - Floating docking connector for reliable connectivity in the most rugged environments
 - Optional lock (keyed alike) for theft deterrence
 - Easy to use one-handed operation:
 - Insert bottom of computer into the docking station, push top of computer against latch button until latch engages
 - To remove, push up on latch-button with thumb to disengage and pull computer out of the docking station
 - VESA 75 mm mounting pattern
 - MIL-STD 810G shock/vibration, RoHS, FCC, and SAE J1455 crash certifications
 - 3-Year Limited Warranty



OVERHEAD GUARD LEG MOUNTS

Mount any device securely to forklift overhead guard legs. Gamber-Johnson Universal Mount attaches to all popular forklift guard legs.

CLAM SHELLS

Our Clam Shell line is Gamber-Johnson’s staple product when it comes to extending the usability of technology into the mobile world of material handling. Easily attach any device, dock, cradle, or interface plate with the multiple hole patterns featured on the product. Our Clam Shells work to tailor to individual operator comfort and safety by providing a wide range of adjustments for optimal viewing of a device, improved visibility, and proximity to the operator.

GUARD LEG MOUNT WITH LOCKING SWING ARM MOUNT 7160-1841

The locking swing arm keeps your devices positioned where you want them, and the one-handed operation allows for easy adjustability.

- Mounting Versatility: Mount sandwiches the overhead guard leg and allows user to position the device at the desired height position.
- Locking Swing Arm locks devices in place and can be easily adjusted with one hand position.



7160-1995
Guard Leg Mount



7160-2020
Guard Leg Mount with Dual Arms



7160-0420
Dual Clam Shell with Arm and Small Backer Plate
7160-0421
Dual Clam Shell with Arm and Large Backer Plate



CAB MOUNTS

Secure your valuable tablets and devices right in the cab of your material handling vehicle using one of our reliable OEM specific mounts. Perfectly suited to tailor your workspace to the most efficient, ergonomic, and secure configuration, all while protecting your valuable assets and lift vehicle operators.



7160-1151
Toyota Cab Latch Mount
for Electronic Hydraulics



7160-1233
Toyota Cab Mount



7160-1096
Clamp Bracket Adapter



7160-1103
Linde E30 Latch Mounting Bracket



7160-1278
Yale Hyster 40/70
Cab Mount



7160-1109
Yale/Hyster Electric Bracket



7160-0363
Horizontal Extension Bar

HORIZONTAL EXTENSION

Increase your usable mounting space with our horizontal extension giving you more room to mount a total solution. Compatible with all Gamber-Johnson's roll formed and tube clamp brackets to ensure secure fitment to any overhead guard leg profile.

TUBE CLAMP MOUNTS

Expand your mounting location options by connecting your solution to multiple sizes of cylindrical poles, handles, or tubular style overhead guard legs. Adapt a Clam Shell product to finalize the total solution.



7160-0561
2", 2.5", 3" Diameter Tube
Clamp



zirkona
7160-1356-01
Zirkona 2" to 3" Pole Mount with
VESA 75mm Mounting Plate
7160-1356
Zirkona 2" to 3" Pole Mount with
AMPS/NEC Mounting Plate



zirkona
7160-1367-01
Zirkona 3/4" to 1 7/8" Pole Mount
with VESA 75mm Mounting Plate
7160-1367
Zirkona 3/4" to 1-7/8" Pole Mount
with AMPS/NEC Mounting Plate

ROLL FORM BRACKETS

We have the ideal products for every mounting situation; including lift vehicles that have roll formed overhead guard legs. These brackets conform perfectly to various roll formed profiles ultimately creating a solid foundation to adapt our Clam Shell product line.

Pair with with **DUAL CLAM SHELL MOUNT (PG. 7)** to complete your solution



7160-0418
For Yale/Hyster, Crown,
and others
7160-1542
For CLARK
7160-0814
For Jungheinrich / CAT /
Toyota
7160-0815
For Linde Models EV-30
and EV40

DIAMOND PLATE MOUNTS

When it comes to mounting lightweight devices turn to Gamber-Johnson's diamond plate mounts for a reliable solution. Multiple product offerings to interface your device with various hole patterns and ample adjustability to accommodate operator comfort and ease of use.



zirkona
7160-1261
Zirkona 4" Diamond
Plate with Large
Joiner and AMPS/
NEC Plate
7160-1261-01
Zirkona 4" Diamond
Plate with Large
Joiner and VESA
75mm Plate



zirkona
7160-1466
Zirkona, 4" Dia-
mond Plate with 6"
Medium Dog-Bone
and AMPs Plate
7160-1466-01
Zirkona, 4" Dia-
mond Plate with 6"
Medium Dog-Bone
and VESA 75 mm
Plate

OVERHEAD GUARD MOUNTS

Increase your operator’s forward visibility by tucking your device up and out of the way. Directly mount from the overhead guard using various ergonomic options that best fit a wide variety of operator needs and preferences.



ADJUSTABLE OVERHEAD GUARD BAR-TALL

7160-1591-01

Adjustable mount designed with extended height and the flexibility to attach to angled or vertical cross bars on a variety of OEM overhead guards. Positions and secures your device to maximize operator workspace, increase safety, and ergonomics.

- Positions device at the forward most point of the cross bar allowing for a secure and ergonomic position.
- Attaches to angled or vertical forward cross bars, from 0-90 degrees, allowing the mount to attach to a variety of OEM overhead guards.
- Vertical adjustability allows the end user to position the device to their specific need.



7160-1591
Tall Adjustable
Overhead Guard
Bar-short



7160-1425
Overhead Guard
Cab Mount



7160-1156-01
Tall Overhead
Bar Mount



7160-0368
Overhead Guard
Mount with Single
Clam Shell



7160-0856
Vertical
Extension Bar

PERIPHERAL MOUNTS

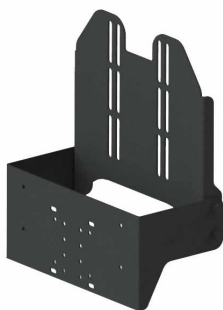
With today’s mobile work environments being inundated with technology, Gamber-Johnson has you covered with various peripheral and accessory needs to ease day-to-day tasks, improve ergonomics, and increase workplace productivity and safety.

KEYBOARDS & KEYBOARD MOUNTS

Configure your keyboard for ultimate ease of use and the fastest possible access with our large selection of Keyboard Mounts. With an ergonomic angle that meets user needs, working on the keyboard in the field can be more streamlined and reliable than ever before.



7160-0799
Tablet Keyboard Mount
7160-0799-01
Tablet Keyboard Mount - Tall
Backplate



7160-1257
Vertical Tablet Keyboard Mount
7160-1257-01
Vertical Tablet Keyboard Mount -
Tall Backplate



7160-0859
Number Pad Bracket



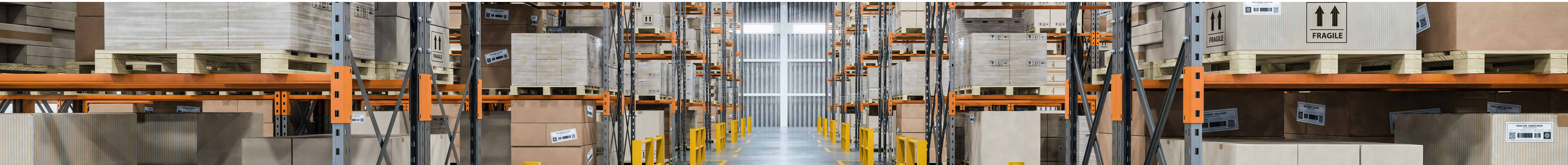
7170-0817-01
Rugged Lite Backlit Keyboard
and Quick Release Keyboard
Cradle



7160-1449-00
Rugged Lite Keyboard



iKey Rugged Keyboard
*See website for full assortment



HANDHELD SCANNER MOUNTS

Safeguard handheld scanners from accidental drops and catastrophic damage by housing your device with the right mount to fit your operation's needs.



7160-1306
Scanner Pocket Mount
with Small Back Plate



7160-1389
Scanner Pocket Tablet
Mount



7170-0788
Zirkona 4" Diamond Mount
w/Scanner Pocket



7160-1380
Pistol Grip Scanner
Bracket

7170-0764
Zirkona, Pistol Grip
Scanner Mount



ZEBRA DS3678 SCANNER CRADLE MOUNTS

7170-1049

Zebra DS3678 Scanner
Cradle 2" - 3" Round Tube
Mount Kit

7170-1048

Zebra DS3678 Scanner
Cradle Rectangular Guard
Leg Mount Kit

7170-1050

Zebra DS3678 Scanner
Cradle Pivoting Mount Kit



HONEYWELL GRANIT CRADLE MOUNTS

7170-1047

Honeywell Granit Cradle 2" -
3" Round Tube Mount Kit

7170-1051

Honeywell Granit Cradle
Pivoting
Mount Kit

7170-1014

Honeywell Granit Cradle
Rectangular Guard Leg
Mount Kit



7160-1259
Flat Surface Magnet
Mount with Scanner
Holder

SAFETY LIGHT MOUNTS

Mount safety lights to present a visual alert to help increase warehouse safety, minimize the risk of accidents, and improve visible awareness of approaching lift vehicles.



7160-0610
Single Light
Bracket



7160-1719
Forklift Light
Mount

PRINTER MOUNTS

Continue to expand from a desk to a mobile work environment by creating a secure and accessible way to mount rugged mobile printers.



7160-0817
Zebra ZQ630/QLN420
Printer Bracket



7160-1473
Zebra ZQ620 Printer
Bracket



7160-1821
Honeywell RP2 Printer
Mount



7160-1816
Honeywell RP4
Printer Mount



7160-1693
ZEBRA ZD620D, ZD620T,
ZD621D, and ZD621T, 75MM
HP Printer Mount



7160-1053
Zebra ZQ500 Printer
Mount

OTHER PERIPHERAL MOUNTS



7160-1669
Fixed Forklift Cup
Holder Mount



7160-1810
Shrink Wrap Mount -
Small Back Plate

7160-1810-1
Shrink Wrap Mount -
Large Back Plate



7300-0302
Retractable
Scanner Reel

POWER SUPPLIES, WIRING
KITS & MOUNTS

LIND

Protect and power your valuable devices by pairing them with a clean, stable power source to guarantee functionality and longevity. Combine with a Gamber-Johnson Wiring Kit and Power Supply Mount for a professional look and quick installation.



LIND ISOLATED POWER SUPPLY FOR GETAC*

*See website for full assortment

- 7300-0416
Lind 72-110V Material Handling Isolated Power Adapter for Getac
- 7300-0466
Lind 12-32V Material Handling Isolated Power Adapter for Getac ZX70 Only
- 7300-0467
Lind 20-60V Material Handling Isolated Power Adapter for Getac ZX70 Only
- 7300-0413
Lind 12-32V Material Handling Isolated Power Adapter for Getac
- 7300-0412
Lind 20-60V Material Handling Isolated Power Adapter for Getac



7300-0482 Wiring Kit



7160-1333 Power Supply Clamp



VOLTVAULT PRO SHUT DOWN TIMER

7300-0410

- Adjustable - 5 seconds to 4 hours
- Shut Down Timer (SDT) protects the automobile battery from over discharge by shutting OFF at a preset time after engine is shut down or battery discharged to a low voltage level
- SDT protects radio or computer equipment from damage due to low or high input voltage
- Low voltage shut down at 10.5 V DC High voltage shut down at 18 V DC with auto reset
- Automatic activation by sensing the battery voltage (battery not charging = timer ON)



VOLTVAULT SHUT DOWN TIMER

7300-0409

- Factory Set at 2 Hours
- Shut Down Timer (SDT) protects the automobile battery from over discharge by shutting OFF at a preset time after engine is shut down or battery discharged to a low voltage level
- SDT protects radio or computer equipment from damage due to low or high input voltage
- Low voltage shut down at 10.5 V DC
- High voltage shut down at 18 V DC with auto reset
- Automatic activation by sensing the battery voltage (battery not charging = timer ON)
- Optional activation by ignition switch

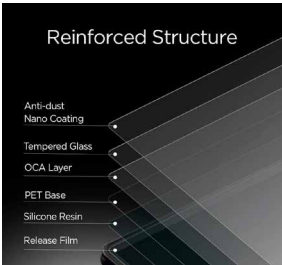
SCREEN PROTECTION AND
MOBILITY SOLUTIONS

InfoCase

Experience reduced fatigue and increased productivity and efficiency due to enhanced ergonomics and comfort. Easily engage with other equipment with the hands-free capability and improved device access.

SCREEN PROTECTION

The InfoCase Rugged Tempered Glass Screen Protection for Getac devices offers an extra layer of defense against scratches and impacts. Designed specifically for Getac rugged tablets and laptops, this laser-cut, custom-fit protector ensures high optical clarity and features an anti-smudge coating for a clear viewing experience.



MOBILITY SOLUTIONS

Whether you are hoping to have your device with you at all times, or have a more ergonomic carrying solution, InfoCase provides optimal convenient options.

Find the full line of solutions at INFOCASE.COM





***MOUNT IT.
POWER IT.
CARRY IT.***



03/2025

GAMBERJOHNSON.COM

5001 Joerns Drive, Stevens Point, WI 54481, U.S.A.
800.487.9220 | sales@gamberjohnson.com

AMERICAN
ALUMINUM
ACCESSORIES, LLC

InfoCase

LIND

PMT

PREMIER
MOUNTS

zirkona