



# **Cradle For Getac B360 Laptop Computers**

## **User Guide**

This user guide is for the following models:

Description	Part Number
Getac B360 Laptop Cradle	7300-0774

# General Instructions

## SAFETY:

- Safety is dependent on the proper installation and servicing of this cradle. It is important to read and follow all instructions before installing this product.
- Proper installation requires a good understanding of automotive electrical systems and is recommended to be performed by qualified technicians only.
- There are no adjustments or user serviceable parts within the docking station. Opening the cradle will void the product warranty
- Do not install equipment or route wires in the deployment path of any air bag, or where it may interfere with critical safety or operating controls of any vehicle.

## Proper Use and Care:

- Proper care and use of this product is critical to maximize safety and to prevent damage to the docking station and laptop.
- Do not store, place or drag any object on top of the cradle.
- Visually inspect the cradle and laptop for any defect before using the cradle or docking the laptop. Do not use if damaged.

## SERVICING [ENTRETIEN]:

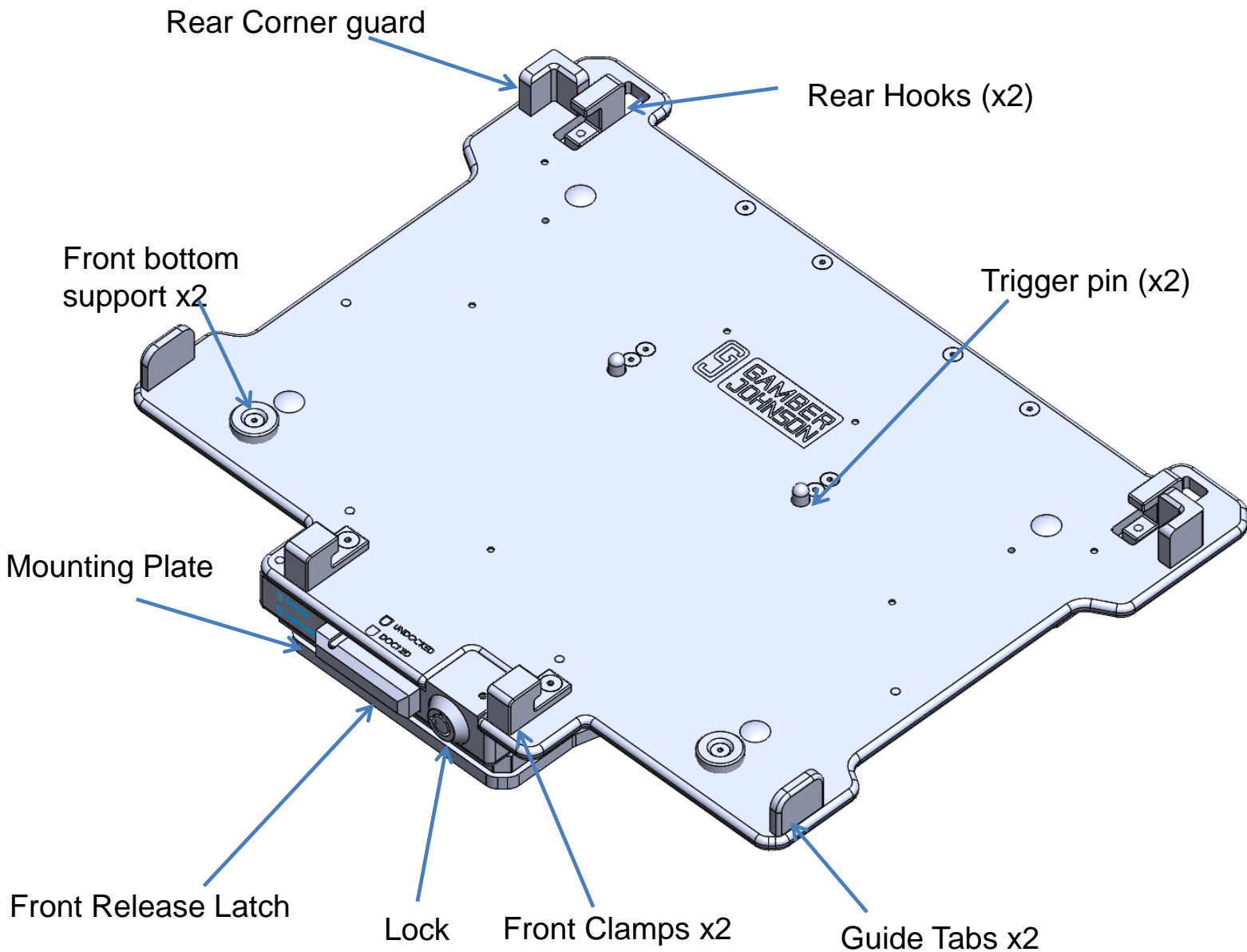
- If the cradle does not work as intended, please contact PMT for troubleshooting or to schedule a service. *[Si le cradle ne fonctionne pas comme prévu, contactez PMT pour le dépannage ou pour planifier un service.]*
- Servicing of the dock should be only done by authorized service center personnel. Unauthorized servicing of the cradle will void its warranty. *[L'entretien du dock ne doit être effectué que par le personnel du centre de service autorisé. Un entretien non autorisé du cradle annulera sa garantie.]*

### Product Mounting Disclaimer

Gamber-Johnson is not liable under any theory of contract or tort law for any loss, damage, personal injury, special, incidental or consequential damages for personal injury or other damage of any nature arising directly or indirectly as a result of the improper installation or use of its products in vehicle or any other application. In order to safely install and use Gamber-Johnson products full consideration of vehicle occupants, vehicle systems (i.e., the location of fuel lines, brake lines, electrical, drive train or other systems), air-bags and other safety equipment is required. Gamber-Johnson specifically disclaims any responsibility for the improper use or installation of its products not consistent with original vehicle manufactures specifications and recommendations, Gamber-Johnson product instruction sheets, or workmanship standards as endorsed through the Gamber-Johnson Certified Installer Program.

# Description of Parts and Layout

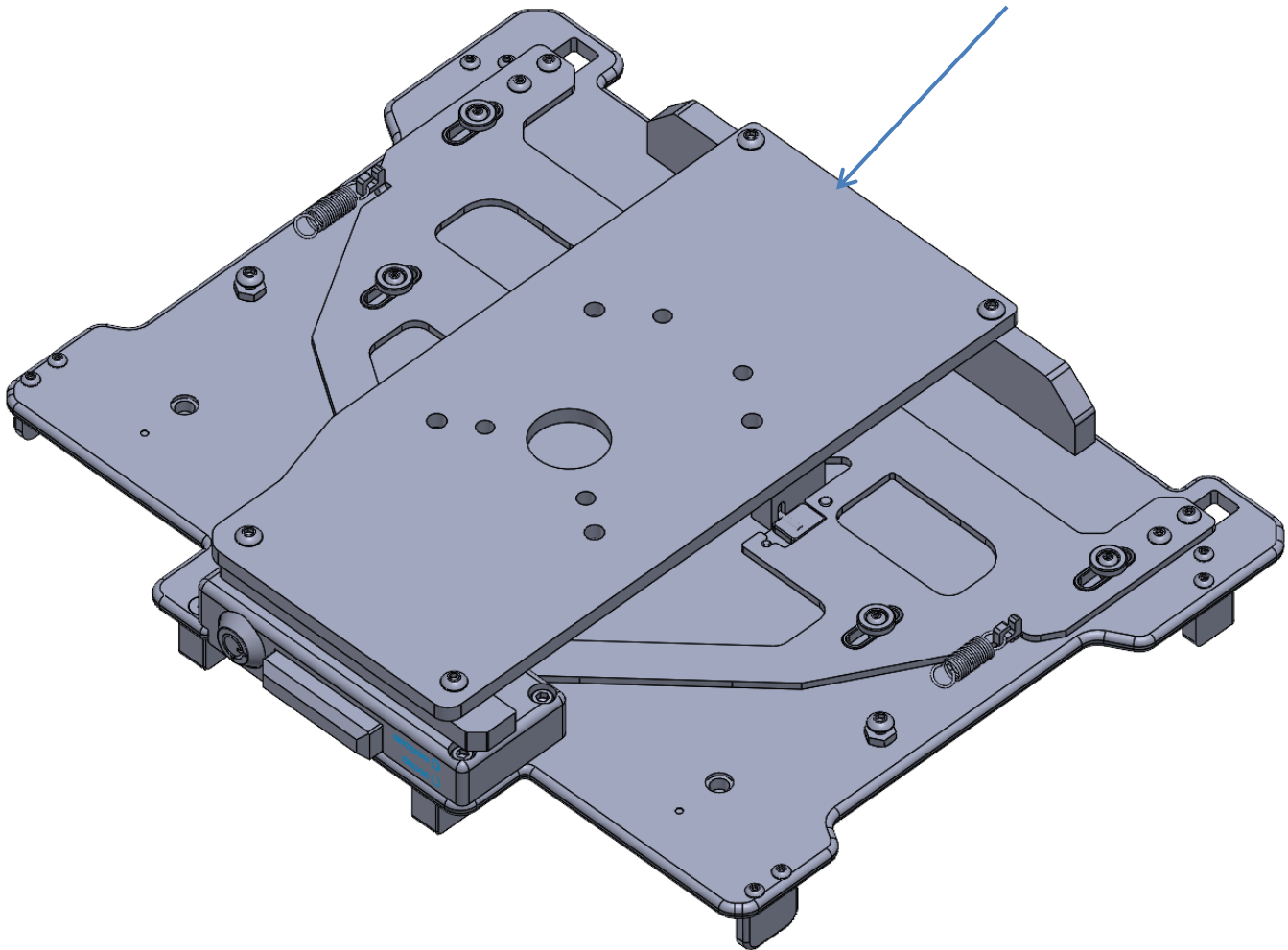
## Front View



## Description of Parts Continued

### Rear View (with mounting plate attached)

Mounting Plate VESA 75mm  
1/4-20 hardware included



# Docking the Laptop

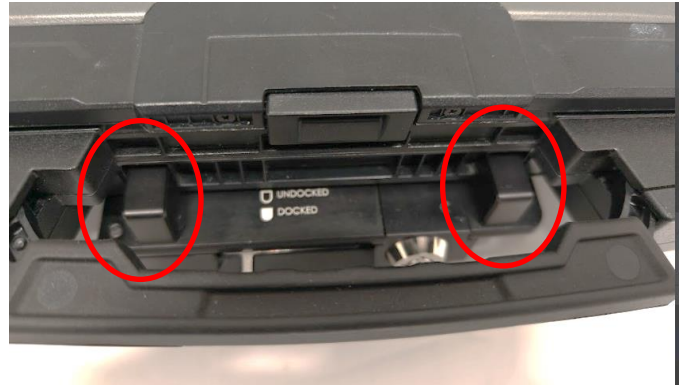
## Step 1:

Ensure that the cradle is unlocked and unlatched. If locked, insert key and rotate lock 90 degrees counter-clockwise. If latched, push the front release latch such that the back hooks move all the way out. An audible noise will be heard once fully un-latched



## Step 2:

Lead the front of the laptop into the front hooks on the cradle such that the pockets on the laptop line up with the front hooks. The guide tabs should help align the laptop as well. Take care while positioning the laptop to ensure proper alignment and to prevent damage



## Step 3:

Push on the back center of the laptop so that rear hooks latch\*. A click sound should be heard when the rear hooks latch.

The laptop can be docked into the dock with lid open or close. If the lid is open, make sure that no keys are pressed while docking

**\*Do not force docking if resistance is felt.  
Stop and check alignment before proceeding**



# Undocking the Laptop

## Step 1:

Ensure that the cradle is unlocked. If locked, insert key and rotate lock 90 degrees counter-clockwise.



## Step 2:

Rotate the screen support arm to the back so that it will not block the laptop of removing from the dock

Use your thumb to push in the front release latch on the front of the dock. This will push the rear clamps out and the laptop will eject with a small click sound.



## Step 3:

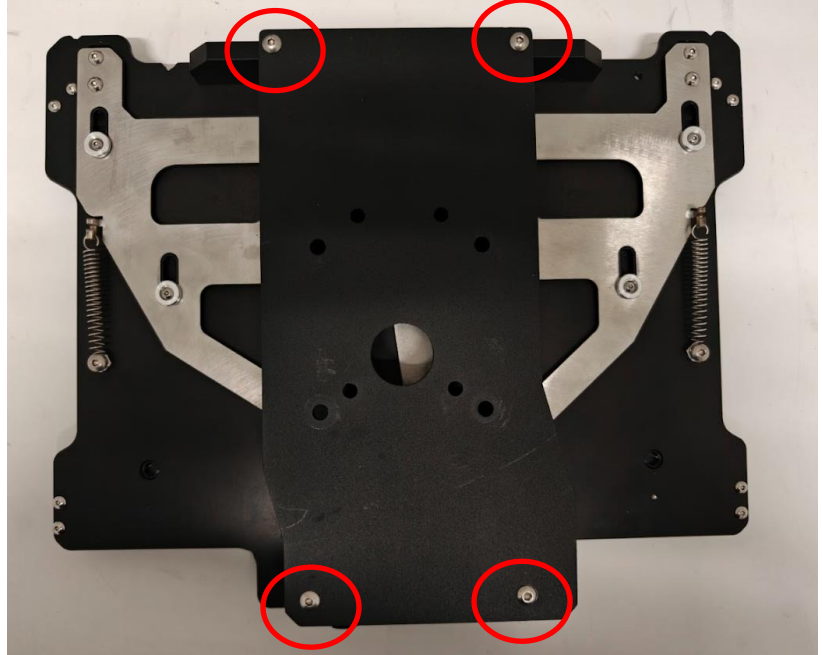
Once the laptop ejects, gently pull the laptop out of the dock. Take care not to drag the laptop or any other device across the top surface of the dock to prevent damage to the pins.



## Cable Management & Mounting

The standard mounting bracket that comes with the vehicle dock features an industry standard VESA 75mm bolt pattern. It must first be removed from the dock by unscrewing the 4x #10-24 screws attaching it to the dock. This allows easy mounting to many pre-existing mounts as well as dedicated mounts from PMT.

Use the supplied 4x #1/4-20 flat head screw and hardware for attaching the back side of the plate to the mount. Then attach the mounting bracket back to the dock.



## Regulatory Certification Information

Regulatory Model #: AS7.G360.100

PMT Model #'s & Description:

AS7.G360.204 – Getac B360 Laptop Cradle

Certifications and test standards:

MIL-STD-810H:CHG1 (Shock/vibration)

RoHS(2011/65/EU)

Made in Canada



[www.gamberjohnson.com](http://www.gamberjohnson.com)

1-800-456-6868 | [sales@gamberjohnson.com](mailto:sales@gamberjohnson.com)

Gamber-Johnson World Headquarters

5001 Joerns Drive, Stevens Point, WI 54481, USA