



INSTALLATION INSTRUCTIONS

Product

7160-1387-02

FORD PI UTILITY, 2020+, REAR CARGO PARTITION

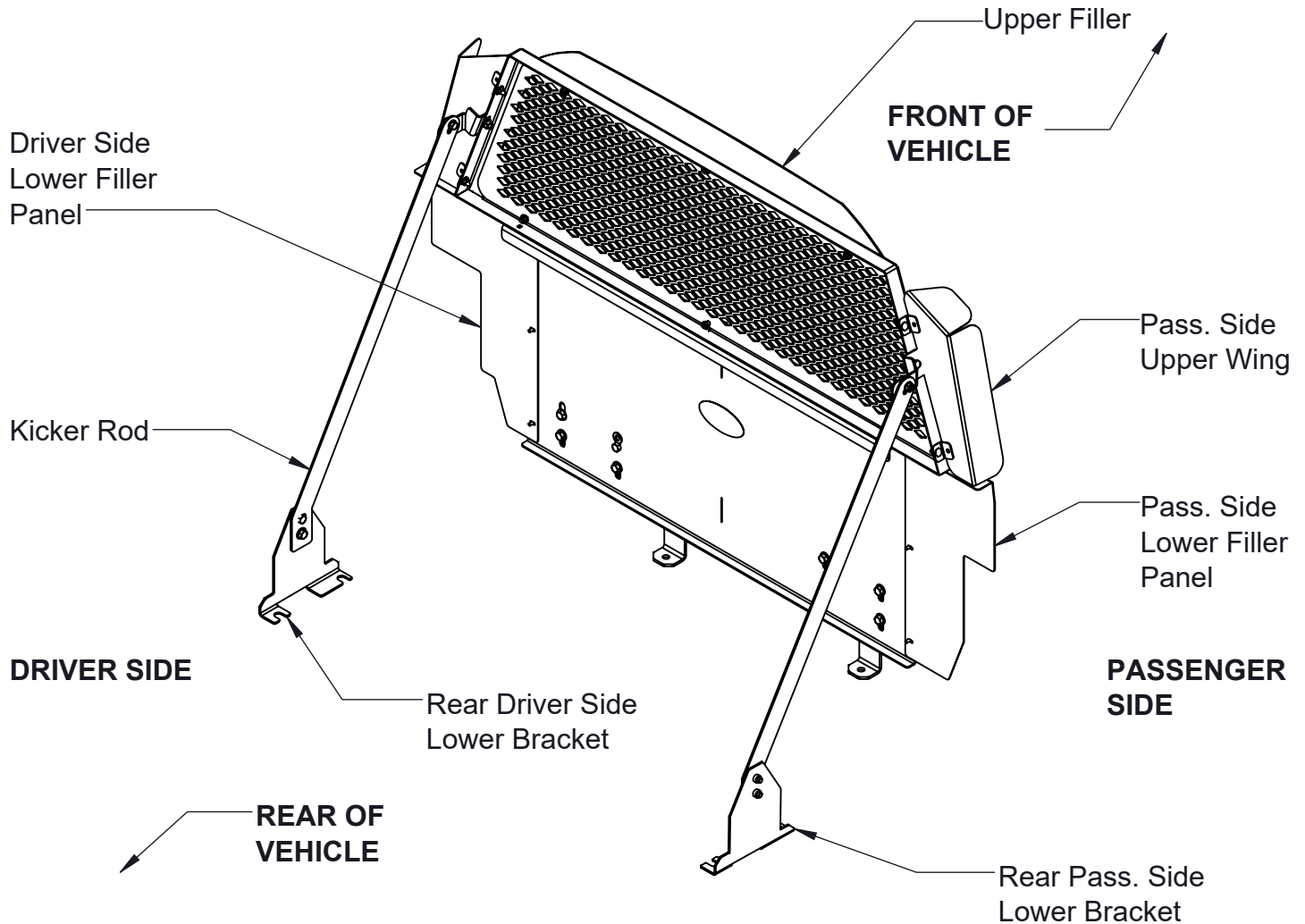
Revision

Rev D

Form

INST-932

Printing Spec: PS-005



WARNING: LOCATE WIRING, FUEL LINES, BRAKE LINES, COOLANT LINES AND REFRIGERANT LINES BEFORE DRILLING ANY HOLES OR INSTALLING ANY SELF-DRILLING FASTENERS.

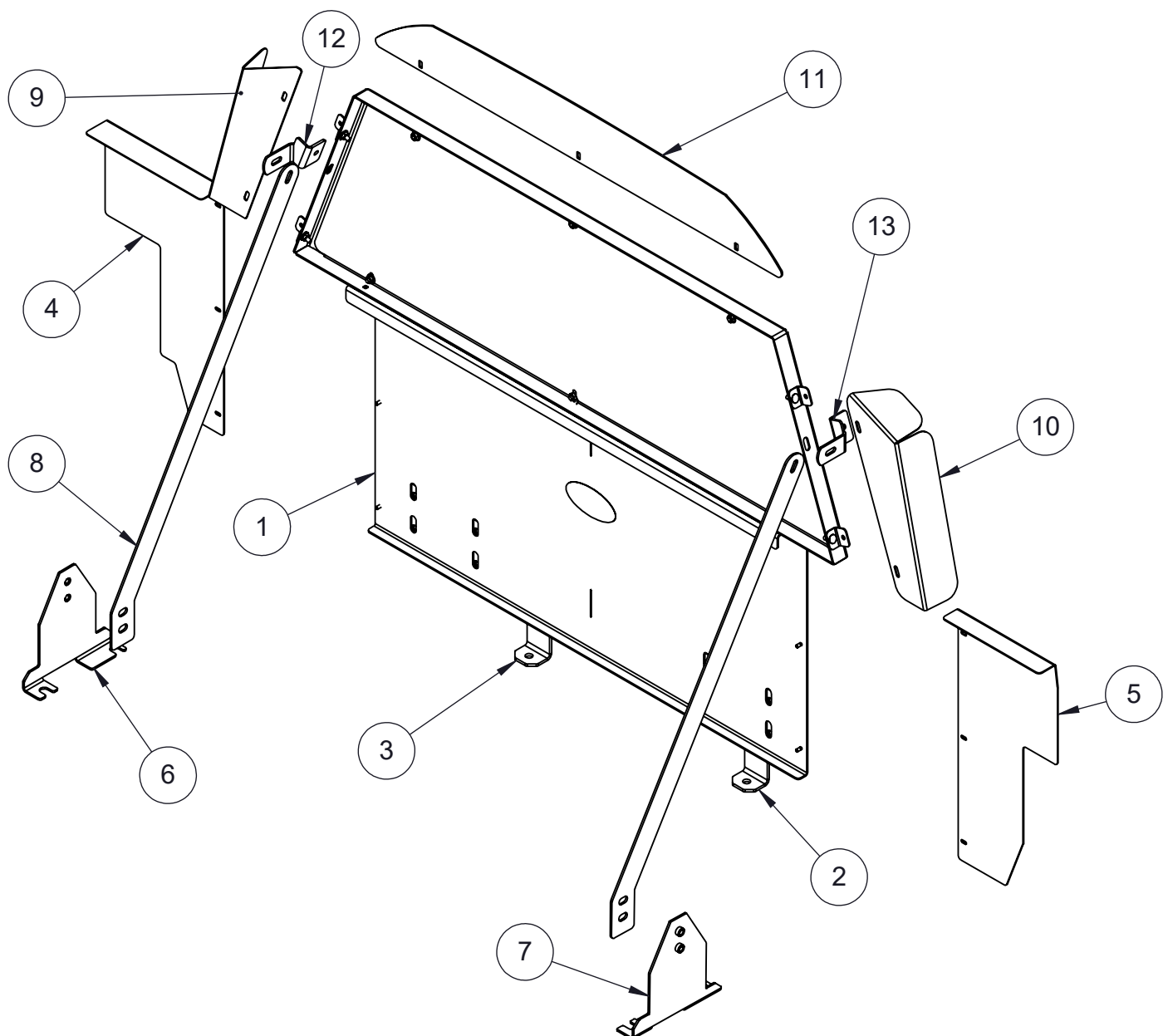
Product Mounting Disclaimer

Gamber-Johnson is not liable under any theory of contract or tort law for any loss, damage, personal injury, special, incidental or consequential damages for personal injury or other damage of any nature arising directly or indirectly as a result of the improper installation or use of its products in vehicle or any other application. In order to safely install and use Gamber-Johnson products full consideration of vehicle occupants, vehicle systems (i.e., the location of fuel lines, brake lines, electrical, drive train or other systems), air-bags and other safety equipment is required. Gamber-Johnson specifically disclaims any responsibility for the improper use or installation of its products not consistent with original vehicle manufactures specifications and recommendations, Gamber-Johnson product instruction sheets, or workmanship standards as endorsed through the Gamber-Johnson Certified Installer Program.

© Copyright 2020 Gamber-Johnson, LLC

If you need assistance or have questions, call Gamber-Johnson at 1-800-456-6868

ITEM	QTY	PART NO	DESCRIPTION
1	1	19496	MAIN FRAME
2	1	19283	PASSENGER SIDE LOWER BRACKET
3	1	19501	DRIVER SIDE LOWER BRACKET
4	1	19527	DRIVER SIDE LOWER FILLER PANEL
5	1	19528	PASSENGER SIDE LOWER FILLER PANEL
6	1	19650	REAR DRIVER SIDE LOWER BRACKET
7	1	19648	REAR PASSENGER SIDE LOWER BRACKET
8	2	19651	KICKER ROD
9	1	19975	DRIVER SIDE UPPER WING
10	1	19974	PASSENGER SIDE UPPER WING
11	1	19007	UPPER FILLER
12	1	19493	CARGO PARTITION, DRIVER SIDE, UPPER BRACKET
13	1	19495	CARGO PARTITION, PASSENGER SIDE UPPER BRACKET



CARGO AREA PREPARATION:

1. First remove the OEM trunk load panels, the smaller panel is bolted down by 2- T 55 Torx head bolts. (Fig.1)

* Remove the 2 foam pieces next to the spare tire, use 8mm socket to remove the bolts holding it in place. (Fig.2)



Fig.1

IMAGE FROM REAR END - TORX HEAD BOLTS



Fig.2

IMAGE FROM REAR END - 8MM BOLTS EXPOSED

2. Remove OEM foam in trunk as shown in Fig.3. Cut the foam as along lines,to expose OEM bolts.



Fig.3 IMAGE SHOWING LINES WHERE TO CUT THE FOAM

3. Remove Six OEM bolts using 18mm socket both driver & passenger side. (Fig.4, Fig.5, Fig.6). Repeat same step on driver side referring to (Fig.6)



Fig.4 IMAGE SHOWING SIX OEM BOLTS NEEDED TO BE REMOVED

**Fig.4 IMAGE
FROM REAR END
DRIVER SIDE**



**Fig.5 IMAGE
FROM
REAR END
PASSENGER SIDE**



**NOTE: UNPLUG OEM 12 VOLT POWER SUPPLY TERMINAL AND
FEED ALL THE WIRES TO THE BOTTOM OF THE FOAM.**

INSTALLATION LOWER MOUNTING BRACKETS

4. Place driver side & passenger side lower bracket (Item #2 & 3) in place & tighten to OEM specs using OEM bolts. (Fig.7 & Fig.8). Replace foam back.



**Fig.7 IMAGE FROM REAR END
INSTALLED DRIVER SIDE
LOWER BRACKET**



**Fig.8 IMAGE FROM REAR END
INSTALLED PASSENGER
SIDE LOWER BRACKET**

5. Install front cargo panel (Item#1) back & tighten it back using the T-55 Torx head bolts.(Fig.9)



Fig.9 IMAGE FROM REAR END CARGO PANEL INSTALLED

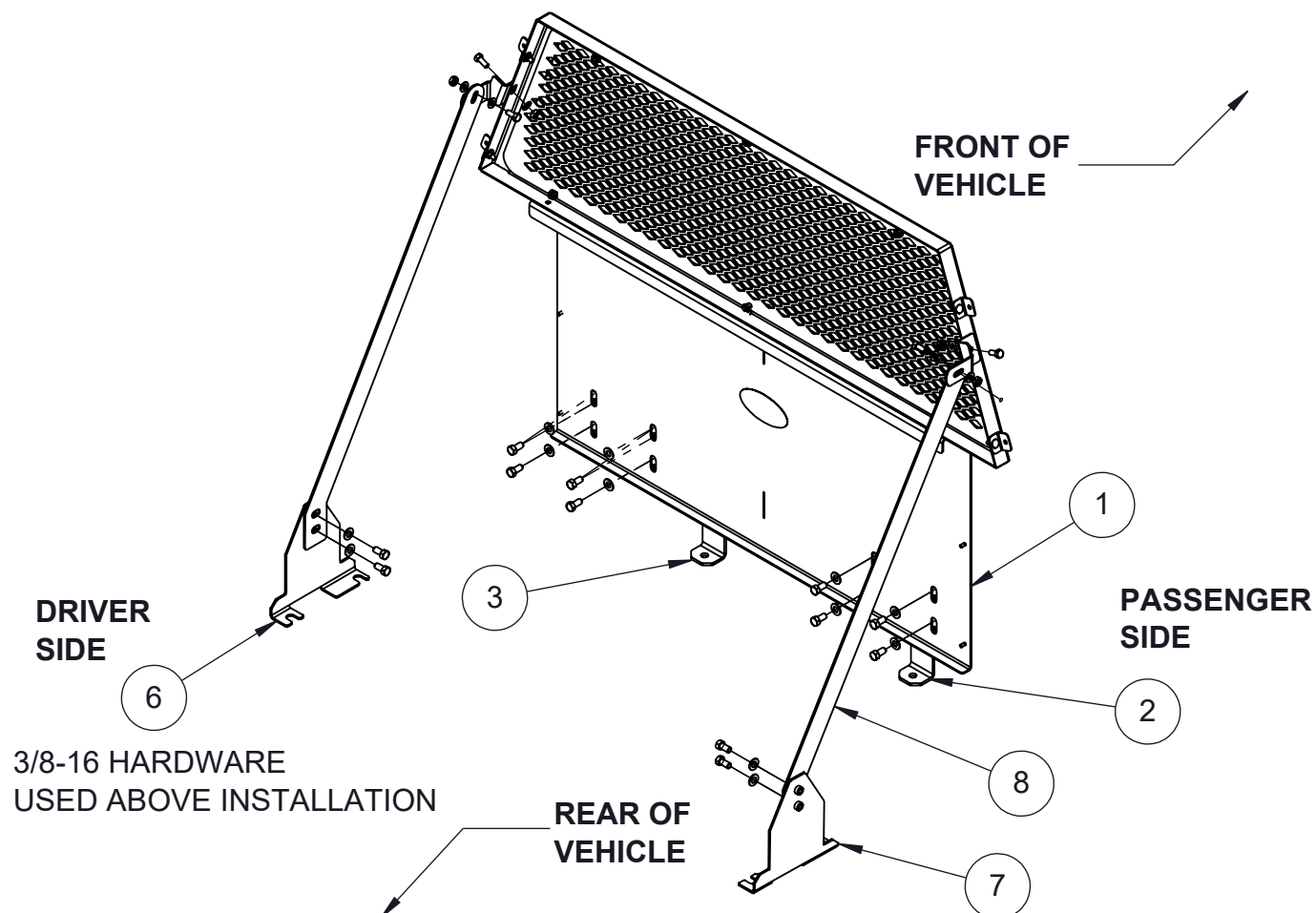


Fig.10

INSTALLATION OF MAIN CARGO BARRIER

6. Place main frame (Item#1) inside vehicle such that label faces towards rear door.

7. Using 3/8-16 hardware provided attach driver & passenger lower brackets (item#2 & #3) to main frame (item#1). See (Fig.10)

8. Install rear passenger & driver lower brackets (Item #6 & Item#7) and tighten OEM Bolts to OEM specs (Fig.11)



Fig.11

**IMAGE SHOWN FROM REAR END
PASSENGER BRACKET INSTALLED**

9. Attach kicker rods (Item#8) to the rear driver & passenger side lower brackets (Item#6 & Item#7) using 3/8-16 hardware provided, (Fig.10 & Fig.13)

10.Join kicker rods (Item#8) to main frame (Item#1) using the cargo partition upper brackets (Item#12 & #13) with the 5/8-16 hardware provided,see Fig.12 & Fig.13.

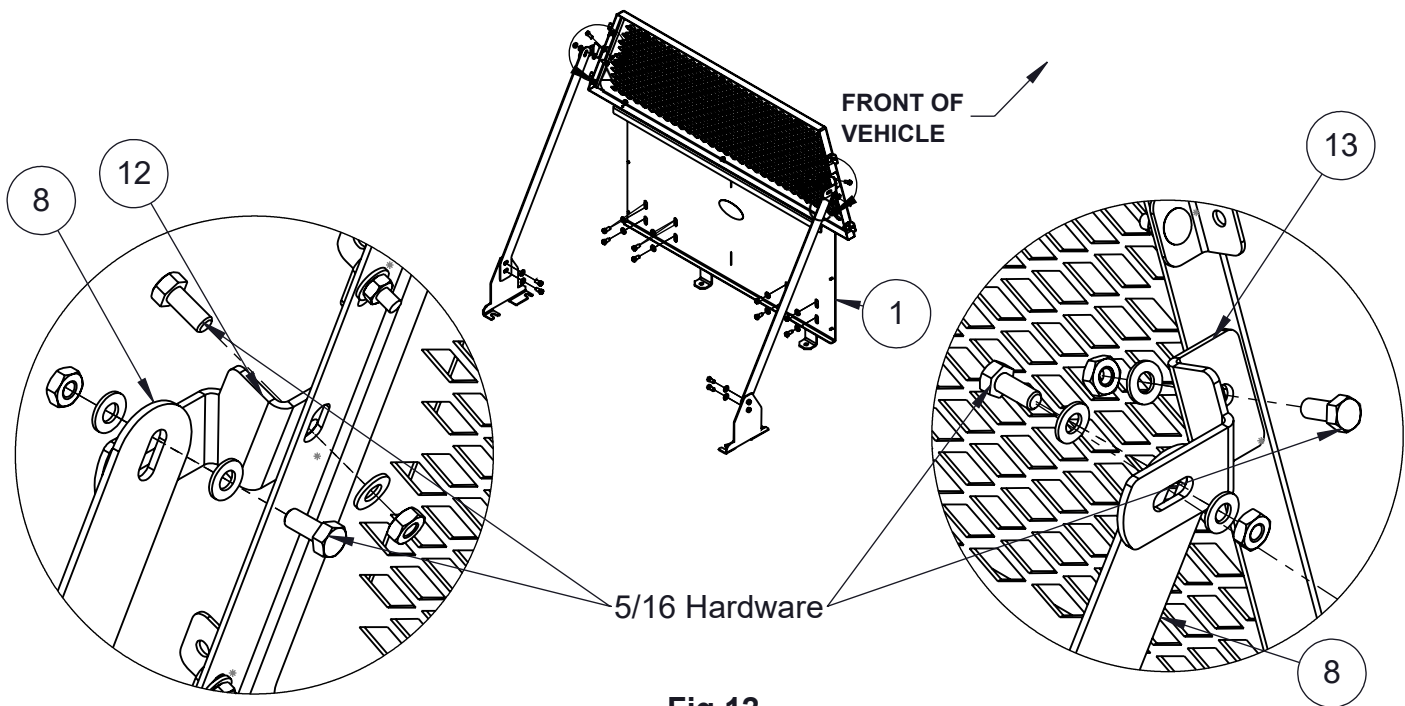


Fig.12

11. Ensure main frame (Item#1) is straight & tighten all the bolts.



Fig.13

**IMAGE FROM REAR END
PASSENGER BRACKET INSTALLED**



Fig.14

**IMAGE FROM REAR END DRIVER SIDE
BRACKET INSTALLED WITH KICKER ROD**

INSTALLATION OF WINGS/FILLER PANEL

12 Using 1/4-20 hardware provided install Driver & Passenger side upper wing (Item#9 & Item#10) to the main frame (Item #1).See (Fig. 15).



Fig.15
IMAGE DRIVER SIDE
UPPER WING INSTALLED

13. As shown in Fig.16 & Fig.17 cut the cargo panel accordingly & install it back into vehicle.

*** Skip this step if Gamber Johnson Trunk Tray is being installed**



Fig.16

DRIVER SIDE- 7" X 1/2"

PASSENGER SIDE- 7.5" X 2"



Fig.18
IMAGE SHOWN FROM REAR END
PASSENGER BRACKET INSTALLED

14. Using 10-32 hardware nuts provided install the driver and passenger side lower wings (Item#4 & Item#5) to the main frame (item#1)
15. Remove three 1/4-20 bolts on Main Frame (Item#1) and reinstall upper filler panel (Item# 11)
 See (Fig.18)



Fig.19
INSTALLATION
COMPLETED



INSTALLATION INSTRUCTIONS

Product

7170-0982-01, -02, -03

Ford PIU single cell partition for OEM seats

Revision

C

Form

INST-1120

Printing Spec: PS-001

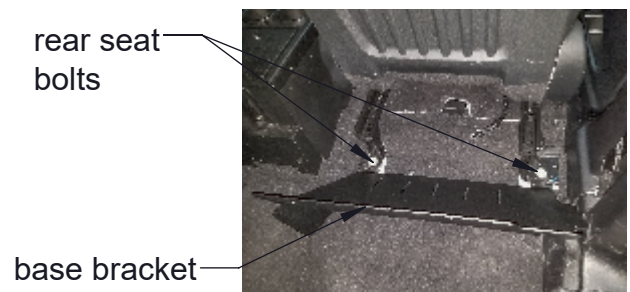
This instruction sheet is for mounting the Ford PIU single cell partition into the vehicle with the OEM rear seats installed. To complete the mount, you will first need the Ford PIU cargo partition (7160-1387) installed. See instruction sheet INST-932 for installing the cargo partition. It will be easier to install the single cell partition into the vehicle if you have 2 people doing the install.

Installing the single cell partition:

1. Slide the passenger front seat backward and loosen the front 2 seat bolts that attach the seat to the floor. Do not remove.
2. Slide the seat forward and remove the 2 rear seat bolts that attach the seat to the floor.
3. Tip the seat forward and insert the passenger side partition base bracket under the seat rails. lower the seat onto the base bracket and reinsert the seat bolts loosely. Slide the partition base bracket forward as far as possible and tighten the rear seat bolts in place.
4. Slide the seat backwards, tighten the front seat bolts that were loosened in step 1, then slide the seat forward again so it is out of the way.
5. Remove the plastic passenger side garment hanger from the headliner above the passenger door. Replace with the rectangular garment hanger cover plate provided (GJ# 20778-16). Use the screw that was removed from the plastic hanger.



front seat bolts



rear seat bolts

base bracket



plastic coat hanger

Product Mounting Disclaimer

Gamber-Johnson is not liable under any theory of contract or tort law for any loss, damage, personal injury, special, incidental or consequential damages for personal injury or other damage of any nature arising directly or indirectly as a result of the improper installation or use of its products in vehicle or any other application. In order to safely install and use Gamber-Johnson products full consideration of vehicle occupants, vehicle systems (i.e., the location of fuel lines, brake lines, electrical, drive train or other systems), air-bags and other safety equipment is required. Gamber-Johnson specifically disclaims any responsibility for the improper use or installation of its products not consistent with original vehicle manufacturers specifications and recommendations, Gamber-Johnson product instruction sheets, or workmanship standards as endorsed through the Gamber-Johnson Certified Installer Program.

© Copyright 2023 Gamber-Johnson, LLC

If you need assistance or have questions, call Gamber-Johnson at 1-800-456-6868



Installing the single cell partition:

6. Remove the passenger side "Grab Handle" from the "B" pillar by removing the grab handle cover with a pick or a small flat screw driver. Then remove the 2 bolts that hold the grab handle to the "B" pillar.

7. Attach the Gamber-Johnson passenger side "B" pillar bracket with the two bolts removed in step 5.

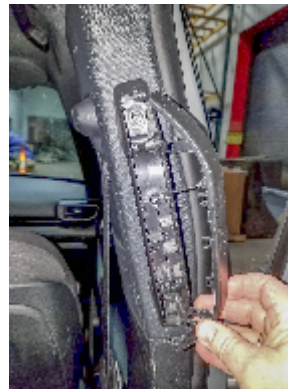
Note: Use hardware bag 7120-1066 for steps 8 thru 11, and 7120-1067 for step 12.

8. Attach the single cell partition to the base bracket and the "B" pillar bracket. Use (4) 5/16" flat washers and nylock nuts found in the hardware bag to attach the partition to the base bracket. Attach the "B" pillar bracket to the partition with the 5/16-18 x 1.00 hex bolt, (2) flat washers, and nylock nut.

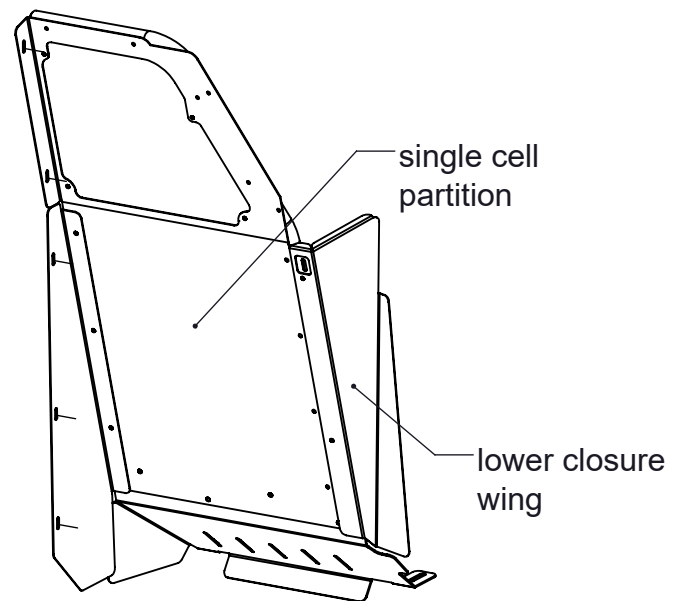
9. Attach the lower closure wing to the partition. Position as far away from the door as possible in the mounting slots and tighten down with the (2) 1/4" flat washers and nylock nuts found in the hardware bag.

10. Remove the protective liners from the clear upper poly wing and attach to the partition with the (2) 1/4 x 7/8" socket button head bolts, (4) plastic flat washers, and (2) nylok nuts provided in the hardware bag. Position the upper poly wing as far away from the door as possible. The bottom should be touching against the top of the lower closure wing installed in step 9. Add the provided dual-lock strips here to prevent rattling.

11. Attach the divider gun mount panel to the partition with the (3) 1/4" flat washers and nylock nuts found in the hardware bag.

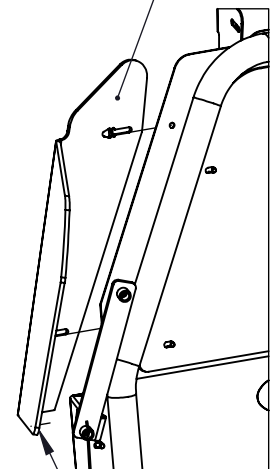


(B) pillar bracket



divider gun mount

clear upper poly wing



Dual-lock strips
adhered to inside
of poly here

Note: Use hardware bag 7120-1101 for steps 13 & 14.

13. Remove the protective liners from the clear front closure window and loosely attach it to the front partition with (2) 1/4 x 3/4" long carriage bolts, flat washers, and nylock nuts in the 2 holes closest to the "B" pillar.

Note: Use hardware bag 7120-1067 for steps 14 thru 19.

14. Attach the "OEM Seat Offset Panel" to the partition and the divider gun mount panel with the (6) 1/4-20 x 3/4" carriage bolts, (10) flat washers (2 per location on long side so the cap nuts don't blow through), and (6) nylock nuts supplied in the hardware bag.

15. Tighten the clear front panel in place now that all the bolts are installed.

16. Slide the lower divider panel between the rear OEM seats and loosely attach to the OEM offset panel installed in step 14 with (2) 1/4-20 x 3/4" carriage bolts, (4) flat washers, and (2) nylock nuts.

17. Rotate the center back seat cushion forward by pulling on the release strap located next to the headrest. Loosen the protective liners from the upper divider window approx. 3" from the edge to expose the mounting locations. Attach the clear upper divider panel to the OEM seat offset panel, the lower divider panel, and the rear divider bracket with the (6) 1/4-20 x 1" carriage bolts, flat washers, and nylock nuts supplied in the hardware bag. Tighten the bolts to the lower divider panel first, then lift the divider upward to close the gap at the headliner as much as possible and tighten the remaining bolts in place.

18. Attach the "Rear Divider Bracket" to the polycarbonate window partition before installing it onto the assembly within the vehicle. Use the 1" carriage bolts, washers and nuts.

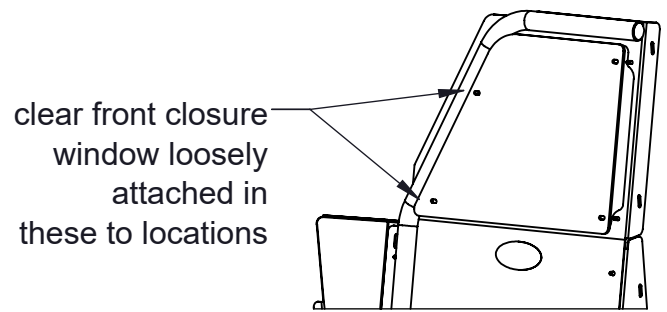
19. Mount the window with bracket into the vehicle using the remaining 1" carriage bolts, washers and nuts. Once loosely attached, fasten the rear divider bracket to the cargo partition window by pinching the window between the bracket and bracket backer. Tighten these fasteners.

Note: If the partition is being mounted to the polycarbonate window of the cargo partition, mark and drill two 9/32" clearance holes into the window.

20. Ensure the partition window and all other panels are positioned correctly and tighten all fasteners.

21. Return the center back seat cushion to the upright position. **Note: push the divider panel away from the center seat back when rotating it upward into position to keep from scratching the clear upper divider window.**

22. Remove the remaining window protective liners.



lower divider panel



Rear Divider Bracket
Shown here behind the poly

