



# INSTALLATION INSTRUCTIONS

**Product**

7170-1146

**Revision**

Rev X1

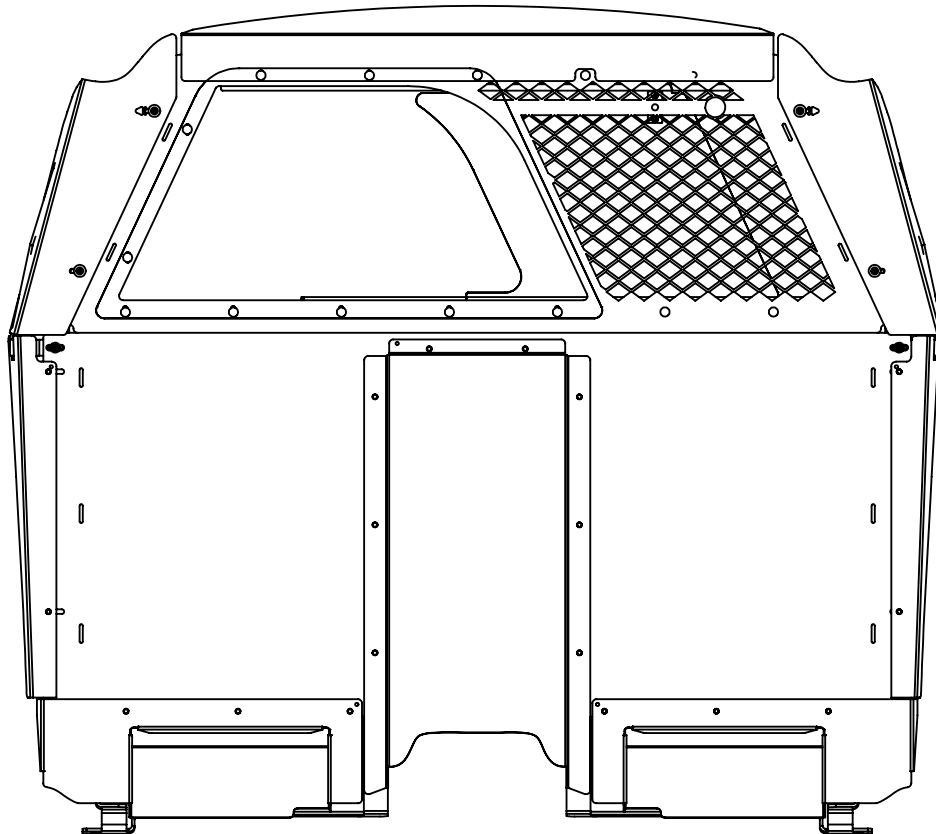
**Form**

INST-1221

Passenger Partition, Dodge Durango, 2017+

Printing Spec: PS-005

Please read through entire instruction packet prior to starting installation.

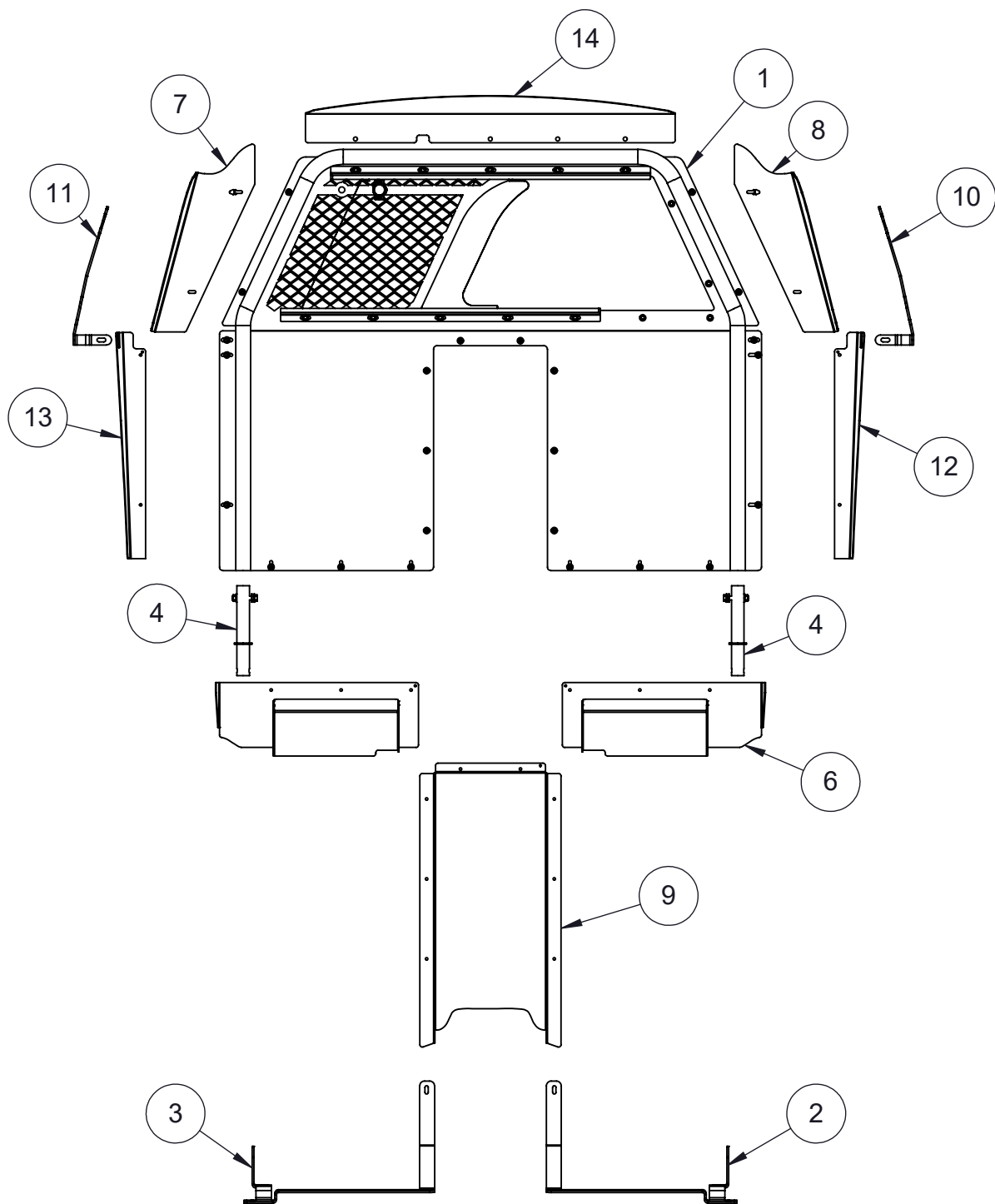
**Product Mounting Disclaimer**

Gamber-Johnson is not liable under any theory of contract or tort law for any loss, damage, personal injury, special, incidental or consequential damages for personal injury or other damage of any nature arising directly or indirectly as a result of the improper installation or use of its products in vehicle or any other application. In order to safely install and use Gamber-Johnson products full consideration of vehicle occupants, vehicle systems (i.e., the location of fuel lines, brake lines, electrical, drive train or other systems), air-bags and other safety equipment is required. Gamber-Johnson specifically disclaims any responsibility for the improper use or installation of its products not consistent with original vehicle manufactures specifications and recommendations, Gamber-Johnson product instruction sheets, or workmanship standards as endorsed through the Gamber-Johnson Certified Installer Program.

© Copyright 2024 Gamber-Johnson, LLC

If you need assistance or have questions, call Gamber-Johnson at 1-800-456-6868

ITEM	QTY	PartNo	DESCRIPTION
1	1	7160-1760	PARTITION, PASSENGER REDESIGNED UNIVERSAL
2	1	20139	P.S. LOWER BRACKET, 2021+ DURANGO P.P
3	1	20076	DODGE DURANGO, PASSANGER PARTITION DRIVER SIDE LOWER BASE
4	2	21841	DODGE DURANGO, LOWER TUDE WITH COLLAR
5	1	20138	P.S, DURANGO FOOT WELL
6	1	20080	DODGE DURANGO, PASSENGER PARTITION DRIVER SIDE FOOT WELL
7	1	20136	D.S, UPPER WING, DURANGO P.P
8	1	20136	D.S, UPPER WING, DURANGO P.P
9	1	21847	DODGE DURANGO, UPPER PASSANGER PARTION RECESSED PANEL
10	1	20115	D.S, B-PILLAR BRACKET, 2021+ DURANGO P.P
11	1	20116	P.S, B-PILLAR BRACKET, DURANGO P.P
12	1	20126	DODGE DURANGO, PASSENGER PARTITION LOWER DRIVER SIDE WING
13	1	20127	DODGE DURANGO, PASSENGER PARTITION LOWER PASSENGER SIDE WING
14	1	21939	DURANGO PASSENGER PARTITION UPPER FILLER PLATE
15	1	7120-1246	HARDWARE BAG DODGE DURANGO PASSENGER PARTITION
16	1	INST-1221	INST DODGE DURANGO PASSENGER PARTITION 2017+



1. Loosen front seat bolts then slide & lean both front seats fully forward
2. Remove rear seat bolts (Fig 1.) from both seats. Then, while pivoting the seat forward, slide the passenger and driver side brackets under the seat tracks (Fig 2.).



3. Loosely reinstall seat bolts.





4. Loosely mount lower tube to each of the passenger & driver side brackets using the provided 3/8 hardware (Fig 3.)

5. Remove upper b-pillar trim. Then remove the two bolts retaining the grab handle (Fig 4.)



6. Install driver and passenger side B-pillar bracket using the bolts removed in step 5 (Fig 4.)

7. Reinstall b-pillar trim



8. Place the partition into the vehicle and slide onto lower tubes (Fig 5.)
9. Rotate partition up to b-pillar brackets and loosely secure using 5/16 bolts, washers and nuts (Fig 6.)

Picture Here : Waiting on brackets from vendor

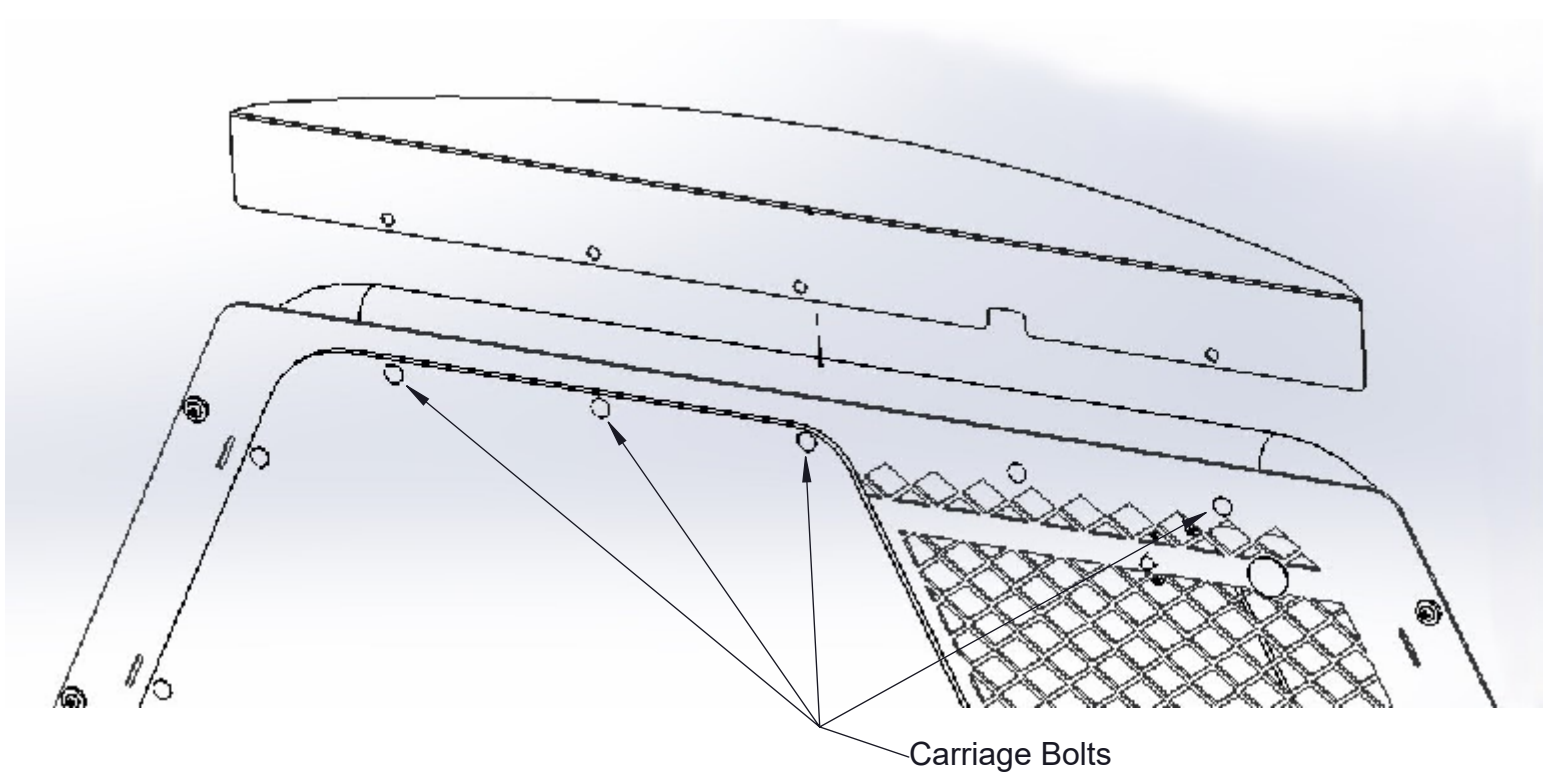
10. Loosely install lower wings to the partition using four 1/4 acorn nuts and washers (Fig 7.)



11. Install center extension to partition using 1/4 acorn nuts and washers (Fig 8.)







12. Install top filler panel by removing the indicated carriage bolts (Fig 9). Then, slide the top filler panel between the poly and partition. Partially tighten the acorn nuts. Adjust for fit prior to fully tightening.

13. Loosely install foot wells to partition using six 1/4 acorn nuts and washers (Fig 10.)



14. Install poly wings to partition using the provided 1/4 button head screws, nylon washers, flat washers, acorn nuts and strips of Dual Lock. Plastic washers should be installed between screw head and poly wing.

Note: Poly wing should be installed such that the face sits inboard of the B pillar bracket with the Dual Lock placed between the bracket and wing.

Note: Only tighten hardware enough to keep poly wings from easily moving, Over tightening of could cause damage to the poly.

Add Picture: Waiting on poly from vendor

15. Adjust all components to minimize gaps and optimize fit. Tighten all hardware including OEM Seat bolts.

Add Picture: Waiting on poly and brackets from vendor for final photo