



# INSTALLATION INSTRUCTIONS

**Product**

7160-1733

**Revision**

Rev. C

**Form**

INST-1084

**WIRELESS CELL PHONE CRADLE**

Printing Spec: PS-004

This instruction sheet is for the Wireless Cell Phone Cradle. For instructions on features, set-up, and operation of the Cell Phone, GPS, or Music Device, please refer to the manual provided by with those products.

This cradle is designed to be used with a variety of Gamber-Johnson mounting systems. Installation instructions for other Gamber-Johnson products are provided with each individual product.

**WARNING:** Very strong magnets. • Fingers could be severely pinched between two or more magnets. • Neodymium Magnets are BRITTLE. • They can SHATTER, CRACK, PEEL or SPLINTER if allowed to snap together or slam into a metal object. • Broken magnets can be Extremely SHARP. • MAGNETIC MEDIA AND ELECTRONIC EQUIPMENT HAZARD. • KEEP AWAY from PACEMAKERS AND INTERNAL MEDICAL DEVICES. • Neodymium magnets will lose their magnetic properties if heated above 175°F (80° C). • Do Not cut or drill Neodymium Magnets, there is a both a fire and fracture hazard and the dust is toxic.

**Product Mounting Disclaimer**

Gamber-Johnson is not liable under any theory of contract or tort law for any loss, damage, personal injury, special, incidental or consequential damages for personal injury or other damage of any nature arising directly or indirectly as a result of the improper installation or use of its products in vehicle or any other application. In order to safely install and use Gamber-Johnson products full consideration of vehicle occupants, vehicle systems (i.e., the location of fuel lines, brakes lines, electrical, drive train or other systems), air-bags and other safety equipment is required. Gamber-Johnson specifically disclaims any responsibility for the improper use or installation of its products not consistent with the original vehicle manufactures specifications and recommendations, Gamber-Johnson product instruction sheets, or workmanship standards as endorsed through the Gamber-Johnson Certified Installer Program.

© Copyright 2024 Gamber-Johnson, LLC

If you need assistance or have questions, call Gamber-Johnson at 1-800-456-6868

# ASSEMBLY INSTRUCTIONS

## DOCK ACCESSORIES

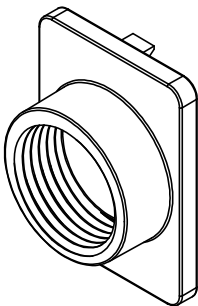
Car Charger



Vent Clip Mount Option



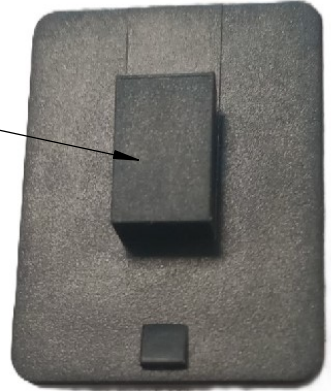
Zirkona Mount Adapter



## ASSEMBLING THE MOUNT TO THE CRADLE

1. Insert the tab of the desired mount into the notch of the cradle. Slide the mount toward the top of the cradle until it latches.

Tab of Mount



Notch of Cradle



Latched



# DOCKING AND UNDOCKING THE DEVICE

## TO DOCK THE DEVICE

1. Press down on the bottom tray with phone
2. Rotate phone back into cradle and release
3. Use silicone strap to secure phone in cradle



**Figure 1**

## TO UNDOCK THE DEVICE

1. Remove silicone strap
2. Press down on phone
3. Rotate phone out of cradle



**Figure 2**