



INSTALLATION INSTRUCTIONS

Product

7160-1929

GETAC S510 LAPTOP DOCKING STATION

Revision

Rev. E

Form

INST-1200

Printing Spec: PS-001

This instruction sheet is for the Getac S510 Laptop Docking Station only. For instructions on features, set-up, and operation of the computer, please refer to the manual provided by Getac with the computer.

This docking station is designed to be used with a variety of Gamber-Johnson mounting systems. Installation instructions for other Gamber-Johnson products are provided with each individual product.

This instruction sheet is for the following products:

- Item No. 7160-1929-00** Non-RF (External Power Supply sold separately)
- Item No. 7160-1929-03** Tri-RF (External Power Supply sold separately)
- Item No. 7160-1929-20** Non-RF W/ Front USB-C (External Power Supply sold separately)
- Item No. 7160-1929-23** Tri-RF W/ Front USB-C (External Power Supply sold separately)

Getac recommends using the following Power Adapters to power the docking station. They can be ordered from Gamber-Johnson separately.

- 7300-0471** - Auto (12-32 Vdc input) - Available with the docking station as KIT **7170-1108**
- 7300-0413** - Isolated (12-32 Vdc input)
- 7300-0412** - Isolated (20-60 Vdc input)
- 7300-0416** - Isolated (72-110 Vdc input)



Product Mounting Disclaimer

Gamber-Johnson is not liable under any theory of contract or tort law for any loss, damage, personal injury, special, incidental or consequential damages for personal injury or other damage of any nature arising directly or indirectly as a result of the improper installation or use of its products in vehicle or any other application. In order to safely install and use Gamber-Johnson products full consideration of vehicle occupants, vehicle systems (i.e., the location of fuel lines, brake lines, electrical, drive train or other systems), air-bags and other safety equipment is required. Gamber-Johnson specifically disclaims any responsibility for the improper use or installation of its products not consistent with original vehicle manufactures specifications and recommendations, Gamber-Johnson product instruction sheets, or workmanship standards as endorsed through the Gamber-Johnson Certified Installer Program.

© Copyright 2024 Gamber-Johnson, LLC

If you need assistance or have questions, call Gamber-Johnson at 1-800-456-6868



PRE-INSTALLATION RECOMMENDATIONS

Conduct a "Bench Test"

Gamber-Johnson strongly advises a "bench test" be conducted to verify all electronic and software issues are resolved prior to installation:

1. Make sure the computer is operational by itself.
2. Insert computer into the docking station and verify that the computer is operating in the dock.
3. Interconnect entire assembly and verify start-up of all components, including other equipment (printers, modems, scanners, etc.)

Gamber-Johnson recommends positioning of all mounts and equipment in the vehicle prior to the actual install to verify that mounting locations are safe and practical.

IMPORTANT SAFETY INFORMATION FOR INSTALLERS

Safety is dependent on the proper installation and servicing of this docking station. It is important to read and follow all instructions before installing this product.

To properly install a Gamber-Johnson docking station you must have a good understanding of automotive electrical procedures and systems, along with proficiency in the installation and service of aftermarket vehicle equipment.

There are no adjustments required at any time of the electrical components within the docking station. **Opening the docking station will void the product warranty.**

During Installation:

DO NOT connect this docking station to the vehicle battery until:

1. All other electrical connections are made
2. Mounting of all components is complete
3. Verification that no shorts exist in the entire system

DO NOT install equipment or route wires or cords in the deployment path of any air bag.

When drilling into the vehicle, DO make sure that both sides of the surface are clear of anything that could be damaged.

CAUTION: *If wiring is shorted to the frame, high current conductors can cause hazardous sparks resulting in electrical fires or flying molten metal.*

After installation:

Test the docking station to ensure that it is working properly.

File these instructions in a safe place and refer to them when performing maintenance or re-installing.

WARNING: *Failure to follow all safety precautions and instructions may result in property damage, serious injury, or death.*

FEATURE IDENTIFICATION

Rear Hooks

Docking Mechanism
Activators

Rear Walls

Provides docking guidance
and prevents mis-docking

External Antenna
Tri RF (Optional -03 & -23)

Docking Connector

Shock Absorbers

Front Hooks

Release Button

Contact Friendly Edges

Screen Support Mounting Location
Mounting Location Left & Right
(#6-32 Hardware Provided)

(2) USB 2.0 (-00 & -03)
(1) USB 2.0 AND (1) USB-C 2.0 (-20 & -23)

Port Identification
(See Page 4)

Part#/Serial# Label

External Antenna - SMA
(WIFI, GPS, CELL)
(Optional)

VESA 75mm Hole Pattern
1/4-20 x 0.500" Hardware Provided

Barrel Key Lock

A photograph of the rear panel of a black electronic device. The panel features several ports and connectors. From left to right, there is a DVI port, an HDMI port, an Ethernet port, a USB port, and a DC IN 12V power jack. Blue arrows point to each of these ports. Above the ports are several small icons: a DVI icon, an HDMI icon, a network icon, a USB icon, and a power icon. The device has a black plastic casing with gold-colored screws on the sides. A white label with the text "Gamber-Johnson" is visible in the bottom left corner.



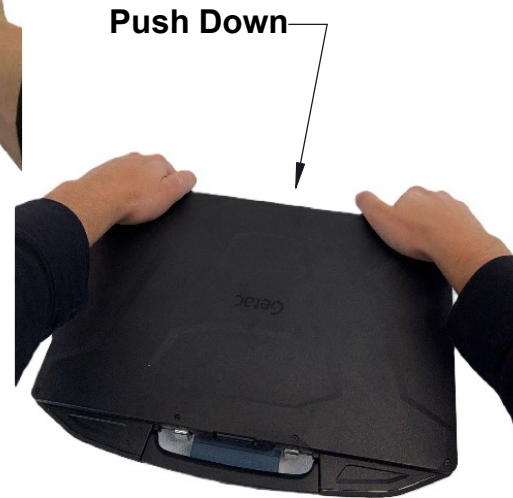
DOCKING AND UNDOCKING THE COMPUTER

OPERATION - DOCKING

1. Insert the front of the laptop into the front hooks of the dock. The walls on the dock will help guide the computer into place.
2. Rotate the back of the laptop onto the dock and push down on both top corners, overcoming the resistance until an audible click is heard. The blue handle will spring inward when the laptop is fully docked. This can be done one or two handed.
3. Optional - With the dock in the "Latched" position, push and turn the lock to the "LOCKED" position (CCW). This will lock the laptop in the dock.



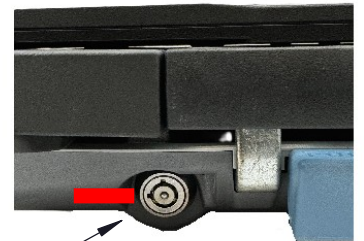
Insert Front First



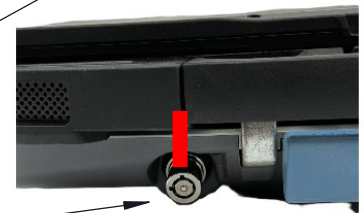
"Docked" Position



"Un-Docked" Position



"Locked" Position



"Un-Locked" Position

OPERATION - LOCK

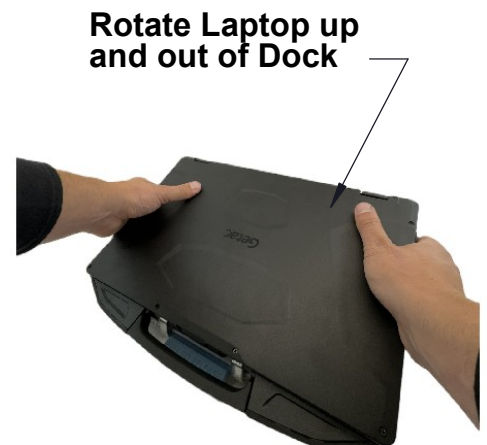
Please note that lock has three positions: unlocked, locked, and stowed. The stowed position is 90 degrees past locked and will act as unlocked but the user is unable to remove the key.

OPERATION - UNDOCKING

1. Turn the lock to the "UNLOCKED" position (CW).
2. With your hand at the front of the dock, pull out on the blue Release Handle until the springs release the laptop.
3. Remove the laptop by rotating it up and out of the dock. This can be done one or two handed.



Pull Release Out



Screen Support Installation

Screen supports are recommended on all laptop dock/cradles in high-vibration environments.

(1) screen support is included with each Getac S510 assembly, another may be purchased from www.GamberJohnson.com. Part Number: 7110-1332



Screen Support Mounting Locations

Use supplied #6-32 screws to attach included screen support to the left or right mounting location, do not over-torque screws.

Reccomended torque is 8-11 in/lbs.



Regulatory Certification Information

Regulatory Model #: 7160-1929

GJ Model #'s & Description:

7160-1929-00	Dock-Getac S510 Laptop-No RF
7160-1929-03	Dock-Getac S510 Laptop-Tri RF
7160-1929-20	Dock-Getac S510 Laptop-No RF W/ Front USB-C
7160-1929-23	Dock-Getac S510 Laptop-Tri RF W/ Front USB-C

Certifications:

- EN 55032: 2015/A11:2020 Class A
- VCCI-CISPR 32:2016
- AS/NZS CISPR 32:2015
- FCC 47 CFR Part 15 Subpart B
- ICES-003, Issue 7:2020
- EN 50498: 2010
- ISO10605, Section 8, Table C.2, Cat. 2
- E-Mark

This device complies with Part 15 of the FCC Rules. Operation is subject to the following two conditions. (1) this device may not cause harmful interference, and (2) this device must accept any interference received, including interference that may cause undesired operation.

 10R06/03 6389 00



FCC

UK
CA

CE



Gamber-Johnson LLC, 5001 Joerns Drive.,
Stevens Point, WI, 54481, USA, 715-344-3482