



RUGGED SOLUTIONS FOR ZEBRA ET40, ET45 & ET401

From in-vehicle mounts to slim docking solutions, Gamber Johnson delivers the accessories you need to keep your Zebra ET40, ET45 and ET401 tablets connected, powered, and protected in the most demanding environments.



*Dual
USB*

*Ethernet
(RJ45)*

*Serial
(RS232)*



*POGO Pin
Charging*



*Slam-Latch
Security*



GAMBERJOHNSON.COM 800.487.9220 | sales@gamberjohnson.com



ZEBRA ET4X 8" & 10" SLIM DOCKING STATION

Manage your fleets with precision. Stay connected with Gamber-Johnson's rugged Docking Stations specifically designed for the Zebra ET40, ET45 and ET401 8" and 10" rugged tablet series.

CERTIFICATES & TESTING

- MIL-STD 810G Shock/Vibration Tested
- MIL-STD 810G Environmental Testing: Humidity, High/low temperature, (storage/operational)
- SAE J1455 Crash Tested
- Cycle Tested: 30K cycles, docking connector, latching & locking mechanisms
- RoHS, FCC, CE, RCM Certifications

| WEIGHT | HEIGHT | WIDTH | DEPTH |
|-------------------|--------------------|--------------------|------------------|
| 1.3 lbs / 0.58 kg | 10.1 in / 26.65 cm | 7.75 in / 19.69 cm | 2.8 in / 7.11 cm |

| ITEM NUMBER | DESCRIPTION | USB 2.0 | SERIAL (RS232) | ETHERNET (RJ45) |
|--------------|---|-------------|----------------|-----------------|
| 7160-1801-00 | Docking Station (Bare Wire) | 2 | | |
| 7160-1801-02 | Docking Station (Cigarette Adapter) | 2 | | |
| 7160-1801-04 | Docking Station (2.5mm DC Power Jack) | 2 | | |
| 7160-1801-20 | Docking Station (Lite Full Board Replication) | 2 | 1 | 1 |
| 7160-1801-90 | Cradle (no electronics) | Cradle Only | | |
| 7160-1807-00 | Docking Station (Bare Wire) | 2 | | |
| 7160-1807-02 | Docking Station (Cigarette Adapter) | 2 | | |
| 7160-1807-04 | Docking Station (2.5mm DC Power Jack) | 2 | | |
| 7160-1807-20 | Docking Station (Lite Full Board Replication) | 2 | 1 | 1 |
| 7160-1807-90 | Cradle (no electronics) | Cradle Only | | |



FEATURES

- Designed for the Zebra ET40, ET45 and ET401 8" and 10" rugged tablet
- Zebra's rugged boot is required in order to work with docking station
- All features of tablet are functional while the tablet is safely docked
- Patented slam latch for simple, one-handed docking and release operation:
 - Insert bottom of Zebra tablet into the docking station and push top of the tablet in until the lock engages.
 - Push latch button up with your thumb then remove the tablet from the docking station.
- POGO pin connector provides power to charge the Zebra tablet while docked
- Barrel Key lock for theft deterrence
- VESA 75mm mounting pattern; compatible with Zirkona mounting products
- Bare Wire, 2.5mm DC Power Jack, and Full Port Replication options
- Can be mounted on a flat vertical surface
- Composite design for reduced overall weight
- Dual powered USB ports; 1.5A for each port for connecting peripheral devices
- Full port replication options available with (2) USB-A (1.5A each), RJ45 Ethernet and RS232 Serial





ACCESSORIES & MOUNTS FOR ZEBRA ET40, ET45 & ET401



Guard Leg Mount (7160-1995)

Securely mount tablets, keyboards, and scanners to forklift overhead guard legs with a single versatile solution. The Gamber-Johnson Guard Leg Mount features a rugged clam shell design and swing arm for flexible positioning, giving operators easy access to all devices in one location.



Adjustable Overhead Guard Bar Mount – Tall (7160-1591-01)

Adjustable mount designed with extended height and the flexibility to attach to angled or vertical cross bars on various OEM overhead guards. Positions and secures your device to maximize operator workspace; increase safety and ergonomics.



Flat Surface Magnet Mount With Tall Clevis (7160-1258-01)

Heavy duty magnets allow users to move the mount from vehicle to vehicle while allowing the protection, function and reliability Gamber-Johnson is known for.



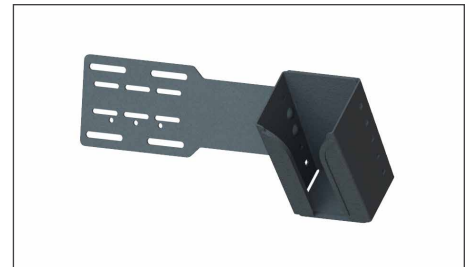
Zirkona 4 Diamond Mount with 6 Medium Dog-Bone and VESA 75mm Plate (7160-1466-01)

A lightweight, versatile mount engineered for durability and rigorously tested to excel in the toughest material handling environments.



Rugged Lite Keyboard (7160-1449-00)

A thin, lightweight, and ergonomic keyboard designed as a cost-effective solution for applications that don't require fully rugged devices. Pair it with Gamber-Johnson's Quick Release Keyboard Cradle for added convenience and efficiency.



Scanner Pocket Tablet Mount (7160-1389)

Minimize your work envelope by securely mounting your handheld device adjacent to your Gamber-Johnson dock/cradle.



LIND POWER SUPPLIES

- LIND 11-16V Automobile Power Adapter (7300-0415)
- LIND 12-32V Isolated Power Adapter (7300-0466)
- LIND 20-60V Isolated Power Adapter (7300-0467)
- LIND 72-110V Isolated Power Adapter (7300-0418)
- LIND AC-12V Material Handling Power Adapter (7300-0472)



ZEBRA ET40/ET45 10" 2-IN-1 ATTACHABLE KEYBOARD

Gamber-Johnson's attachable keyboard for the ET40/ET45 enterprise rugged tablet is the perfect solution for the mobile worker. Install the tablet in seconds to add the functionality of a keyboard with a smooth responsive feel with features you are familiar with.

The USB port can be used to attach a flash drive or another peripheral and the keyboard's hard carry handle makes it easy to carry your tablet/keyboard combo anywhere. The compact design of the ET40/ET45 tablet and attachable keyboard make it a perfect productivity tool for the mobile worker looking for a rugged portable solution they can take anywhere. Not compatible with Zebra ET401.



| WEIGHT | HEIGHT | WIDTH | DEPTH |
|--------------------|-------------------|-------------------|-------------------|
| 1.31 lbs / 0.59 kg | 2.03 in / 5.15 cm | 10.8 in / 27.4 cm | 9.71 in / 24.6 cm |



All computer features including camera, microphone, speakers, USB-C port, barcode scanner and all control buttons are accessible when the tablet is docked onto the keyboard



Designed for the Zebra ET40/ET45 10" Series tablet without rugged frame Integrated center touchpad with right and left mouse buttons safely docked

USB 2.0 port (500mA) to attach a mouse, another peripheral, or flash drive

Silicone rubber keys with white lettering and a rugged polycarbonate case

PRODUCT SELECTION

| ITEM NUMBER | DESCRIPTION |
|----------------------|---|
| 3PTY-GJ-7160-1789-00 | KEYBOARD, 2-IN-1 ATTACH, ZEBRA 4TX, ENGLISH (USA) |
| 3PTY-GJ-7160-1789-01 | KEYBOARD, 2-IN-1 ATTACH, ZEBRA 4TX, ENGLISH (UK) |
| 3PTY-GJ-7160-1789-03 | KEYBOARD, 2-IN-1 ATTACH, ZEBRA 4TX, FRENCH |
| 3PTY-GJ-7160-1789-04 | KEYBOARD, 2-IN-1 ATTACH, ZEBRA 4TX, SPANISH |
| 7160-1789-02 | KEYBOARD, 2-IN-1 ATTACH, ET4X 10", GERMAN |

OTHER FEATURES

- 76-key keyboard with 12 function keys for custom operation
- Easy to install - POGO docking connector links the tablet to the keyboard
- Easily connect the tablet to the keyboard; slip the bottom of the tablet into the case and snap the top of the case over the tablet
- Charge the tablet directly from the tablet's USB-C port
- Designed for the Zebra ET40/ET45 10" Series tablet without a rugged frame
- Friction hinge and screen footrest with rubber feet help position the tablet at a comfortable viewing angle
- Hard carry handle with two attachment rings for shoulder strap enhance portability
- Low-profile ergonomic design for ease of use in a mobile environment

PORT REPLICATION

- USB 2.0 port (500mA)

ACCESSORIES

- Shoulder Strap (7400-020-01)

SPECIFICATION

- Temperature range: OPERATING: -20°C to 60°C STORAGE: -40°C to 85°C
- Designed to IP54 ingress specifications
- Two million actuation per key
- RoHS, FCC Class B, CE, REACH, and C-Tick Certifications

