



INSTALLATION INSTRUCTIONS

Product

7170-1129

REPLACEMENT SEAT - CHEVY TAHOE 2021+

Revision

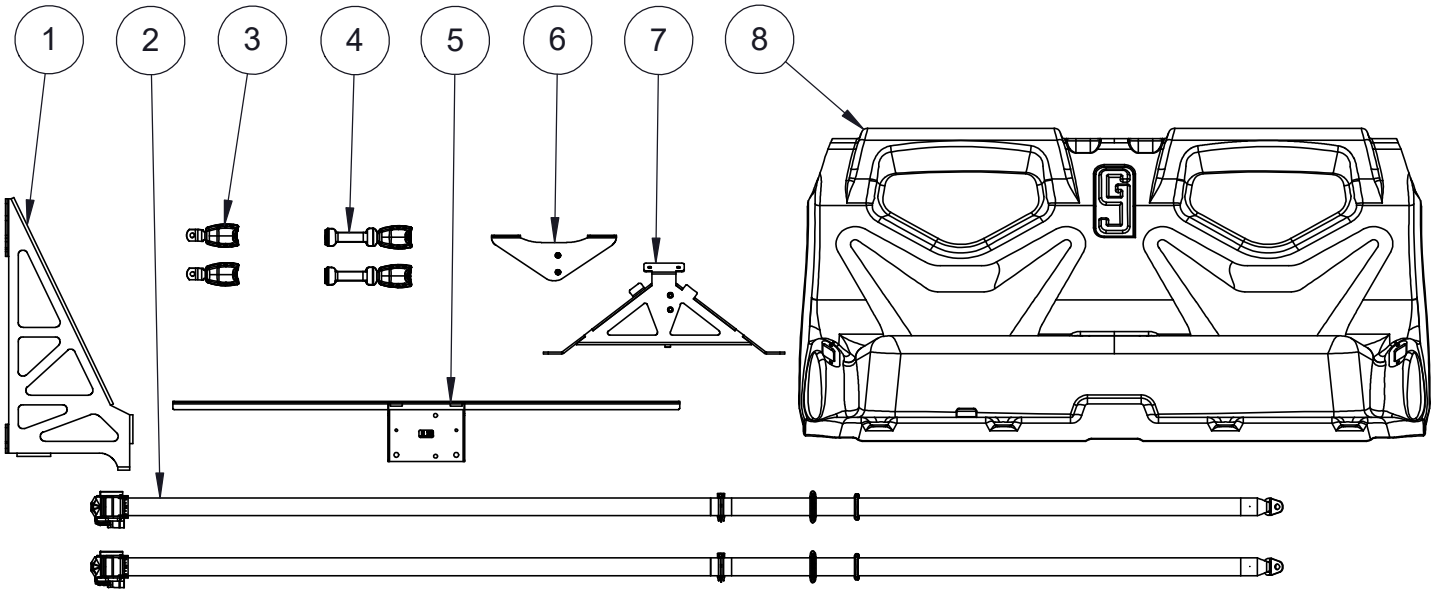
Rev A

Form

INST-1285

Printing Spec: PS-001

ITEM	QTY	PartNo	DESCRIPTION
1	1	21799	MID BRACE - REPLACEMENT SEAT - CHEVY TAHOE 2021+
2	2	21179	SEAT BELT RETRACTOR, 3PT, 123IN
3	2	21188	ASTB BUCKLE 4.7" W/BENT STRAP
4	2	21176	SEAT BELT BUCKLE, 9" RIGHT ANGLE
5	1	7110-1486	UPPER SUPPORT BRACKET - REPLACEMENT SEAT - CHEVY TAHOE 2021+
6	1	22236	REAR BRACE - REPLACEMENT SEAT - CHEVY TAHOE 2021+
7	1	21798	FRONT BRACE - REPLACEMENT SEAT - CHEVY TAHOE 2021+
8	1	21782	REPLACEMENT SEAT - TAHOE - 2021+



Product Mounting Disclaimer
Gamber-Johnson is not liable under any theory of contract or tort law for any loss, damage, personal injury, special, incidental or consequential damages for personal injury or other damage of any nature arising directly or indirectly as a result of the improper installation or use of its products in vehicle or any other application. In order to safely install and use Gamber-Johnson products full consideration of vehicle occupants, vehicle systems (i.e., the location of fuel lines, brake lines, electrical, drive train or other systems), air-bags and other safety equipment is required. Gamber-Johnson specifically disclaims any responsibility for the improper use or installation of its products not consistent with original vehicle manufactures specifications and recommendations, Gamber-Johnson product instruction sheets, or workmanship standards as endorsed through the Gamber-Johnson Certified Installer Program.

© Copyright 2025 Gamber-Johnson, LLC

If you need assistance or have questions, call Gamber-Johnson at 1-800-456-6868



7120-1288: HARDWARE BAG - STRUCTURE HARDWARE

QTY	PartNo	DESCRIPTION
12	10040-0001	3/8-16 x 1.000 HHCS FS-014
15	3130-0052	3/8 WASHER FLAT SAE FS-014
3	1503-3800	3/8-16 NUT NYLOK FS-014
7	10215-0003	1/4-20 x .875 SBHS FS-014
4	15253-0001	M10 X 1.5 X 30 HHFBS -FS-014
2	22403-0035	M10-1.5 X 35MM HHFB FS-014 - G10.9
7	18857-0001	1/4-20 NUT NYLOK FLANGED FS-014
4	22477	WASHER - 0.406" ID X 1.00" OD X 0.06" THK - BLACK OXIDE
7	22481	WASHER - 0.266" ID X 1.00" OD X 0.06" THK - BLACK OXIDE

7120-1291: HARDWARE BAG - COVER PARTS HARDWARE

QTY	PartNo	DESCRIPTION
1	20972	COVER PLATE, SEAT BELT, FORD PIU 2020+
2	22244	CLOSE-OFF PLATE - REPLACEMENT SEAT - CHEVY TAHOE 2021+
4	20873	PUSH-TYPE RETAINER, 8MM STEM, NYLON, BLACK
2	10215-0003	1/4-20 x .875 SBHS FS-014
2	3130-0027	1/4 WASHER FLAT SAE FS-014
1	22406	DS COVER PLATE - REPLACEMENT SEAT - CHEVY TAHOE 2021+
6	17733-0001	#10-32 x 0.625 CB FS-014, GRADE 307A
6	10037-0002	#10 WASHER FLAT .205x.738x.062 FS-014
1	22409	PS COVER PLATE - REPLACEMENT SEAT - CHEVY TAHOE 2021+
6	1503-1000	#10-32 NUT NYLOK FS-014

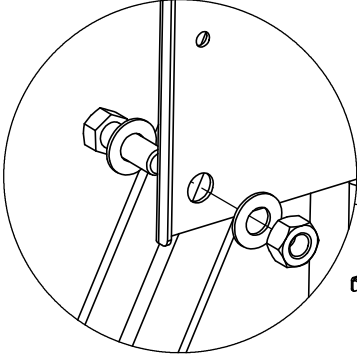
7120-1292: HARDWARE BAG - BUCKLE HARDWARE

QTY	PartNo	DESCRIPTION
2	22243	BUCKLE OFFSET - REPLACEMENT SEAT - CHEVY TAHOE 2021+
2	20599	SPACER, 1/2 to 3/8 BOLT, 0.385 ID x 0.500 OD x 0.500 THK
2	22404-0040	.4375-20 X 2.5" HHCS FS-014 - G8
2	21425-0001	3/8 WASHER FLAT SAE HARDENED FS-014
16	21425-0002	7/16 WASHER FLAT SAE HARDENED FS-014
2	17662-0002	3/8-16 x 1.500 HHCS FS-014, GR 8
6	17664-0003	7/16-14 x 1.250 HHCS FS-014, GR 8
2	10040-0001	3/8-16 x 1.000 HHCS FS-014
6	17744-0002	7/16-14 NUT HEX FS-014 GRADE 8
2	17744-0001	3/8-16 NUT HEX FS-014 GRADE 8
2	22400	SPACER - 1" OD X .5" ID X 1.25" LG
2	1503-3800	3/8-16 NUT NYLOK FS-014
4	3130-0052	3/8 WASHER FLAT SAE FS-014

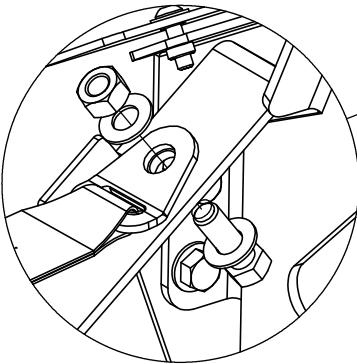
Note: These installation instructions assume the GJ Tahoe Cargo Partition (P/N 7170-1127-XX) using INST-1275 has been previously installed

**7/16 X 1.25" GRADE 8
HARDWARE:
(7120-1292)**

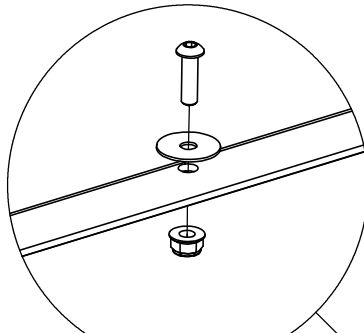
For Retractor Body:



For Retractor Anchor:



**7 PLACES
(7120-1288)**



3/8-16 X 1.5" G8

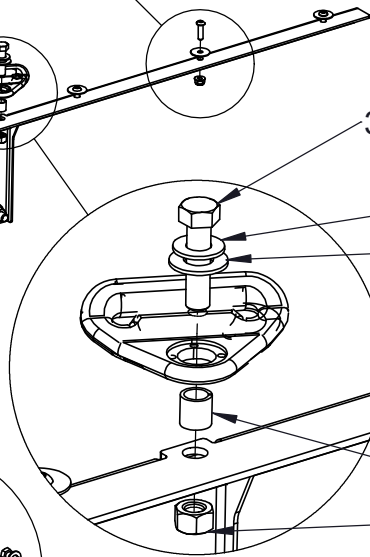
3/8 G8

7/16 G8

1/2" SPACER

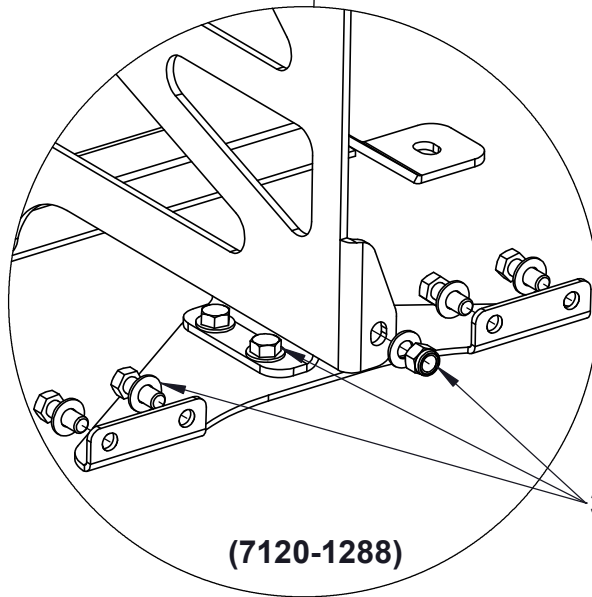
3/8-16 NUT G8

(7120-1292)



3/8 X 1" HARDWARE

(7120-1288)

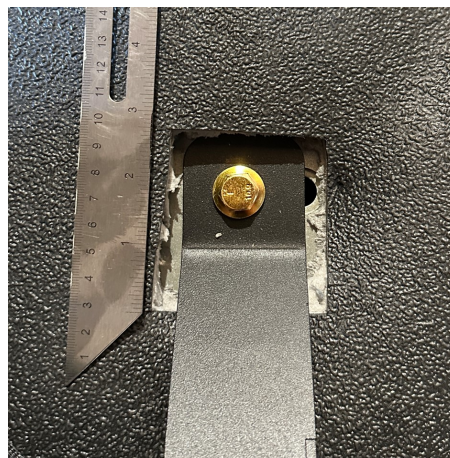


Vehicle Preparation:

1. Remove the rear seats per the Factory Service Manual (FSM). After the seats are removed, remove the stud holding the spare tire jack circled below (white) by unthreading it. Then cut and remove a 3" x 3" section of the vinyl around that stud location.

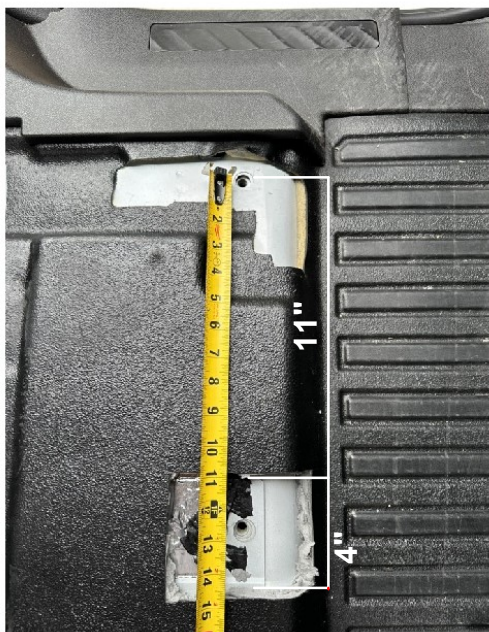


Remove jack stud

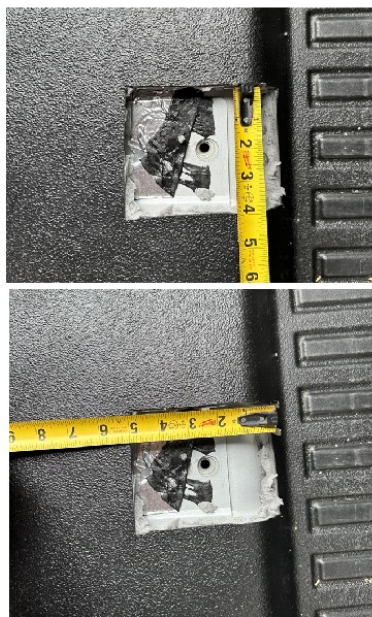


3" x 3" section of vinyl
removed for bracket
clearance

2. From the outer-most driver side seat bolt, cut out a 4" x 5" section of the vinyl flooring as outlined below. (First cut at 11" from outer seat bolt). Remove the tape covering the hole.

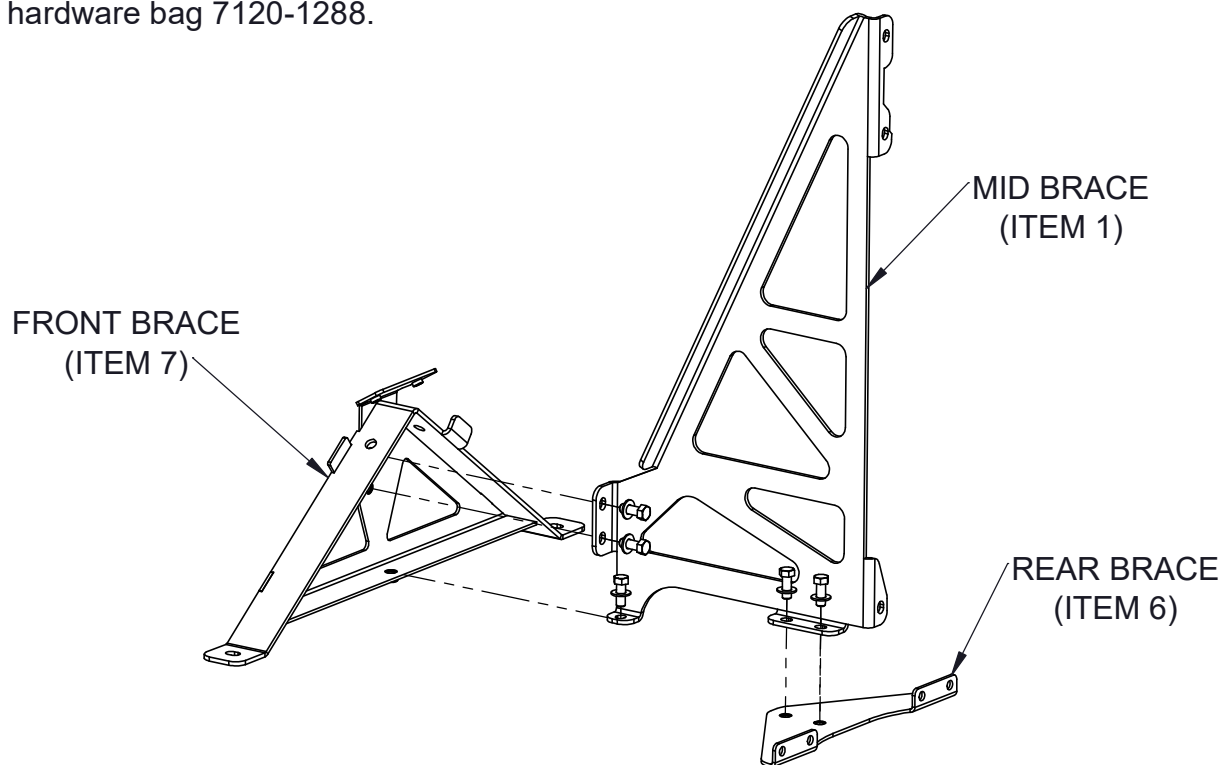


Driver side shown



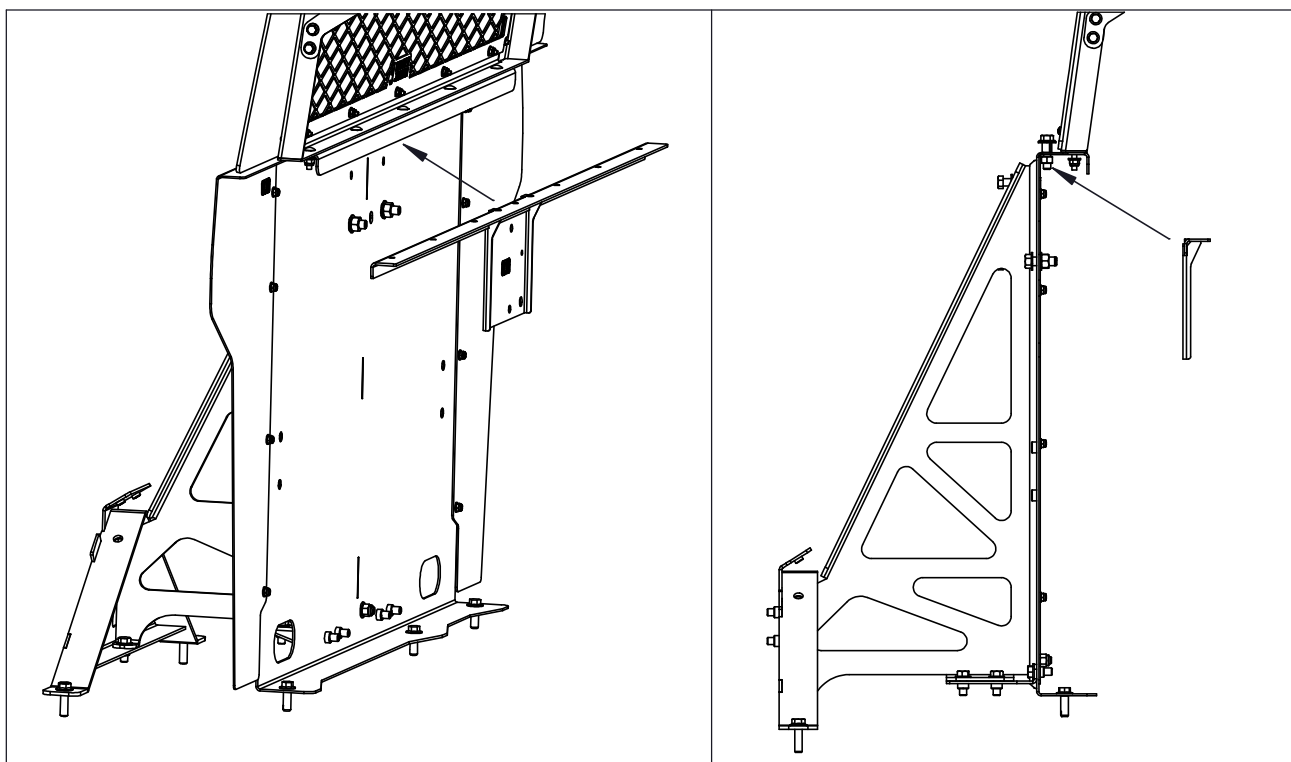
Seat Brace Installation:

3. Loosely assemble the bracing parts shown below using the 3/8 x 1" fasteners and 3/8" washers in hardware bag 7120-1288.



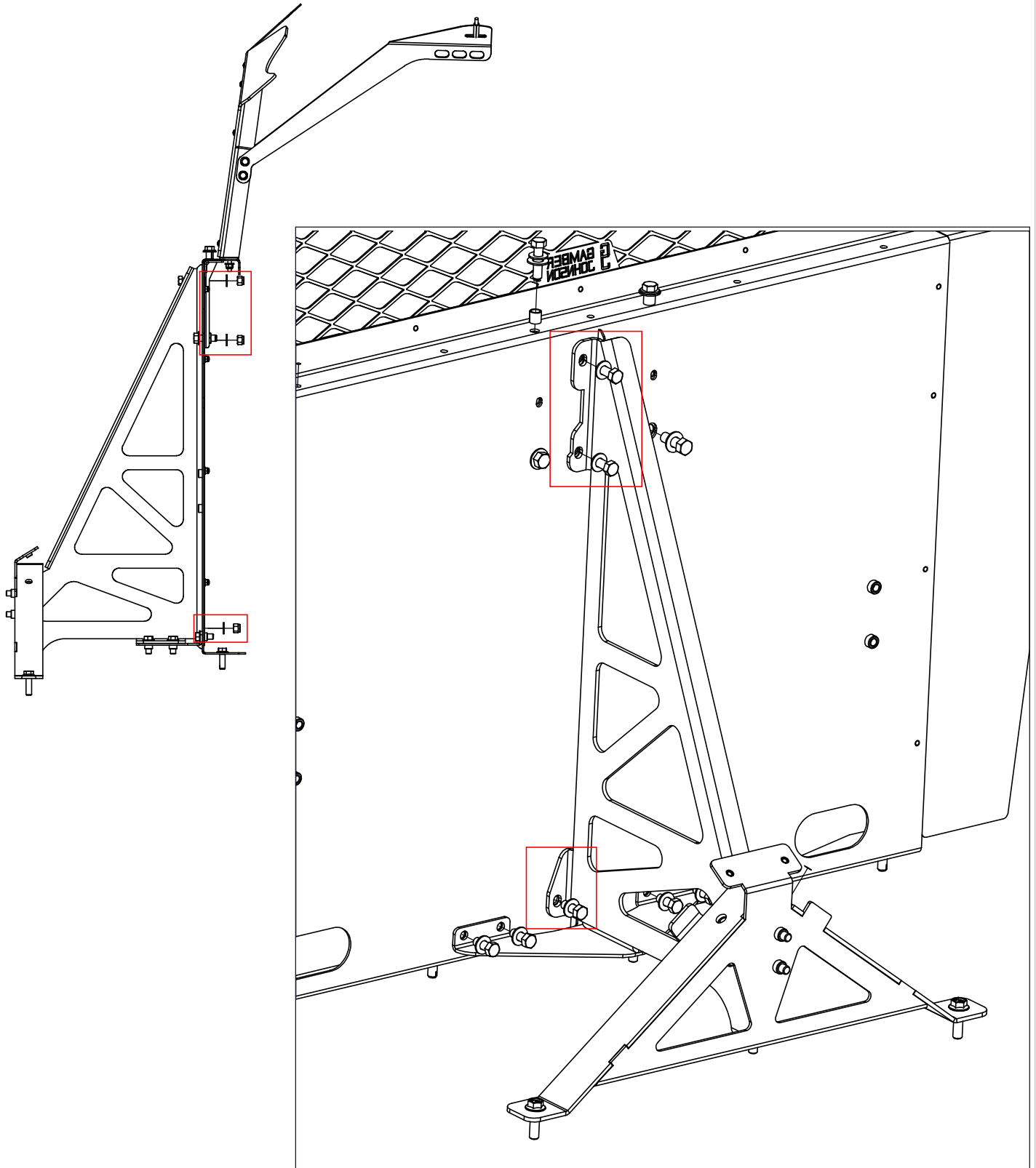
4a. Inside the vehicle, place the brace assembly against the GJ Cargo Partition, then loosely attach the UPPER SUPPORT BRACKET (ITEM 5) using the same 3/8 x 1" fasteners, 3/8" washers on each side and nylok nuts from 7120-1288.

Step 4 continued on the following page



Seat Brace Installation:

4b. Ensure the UPPER SUPPORT BRACKET is held firmly underneath the bend of the partition then tighten the hardware (3/8 x 1" fasteners, 3/8" washers on each side and nylok nuts).



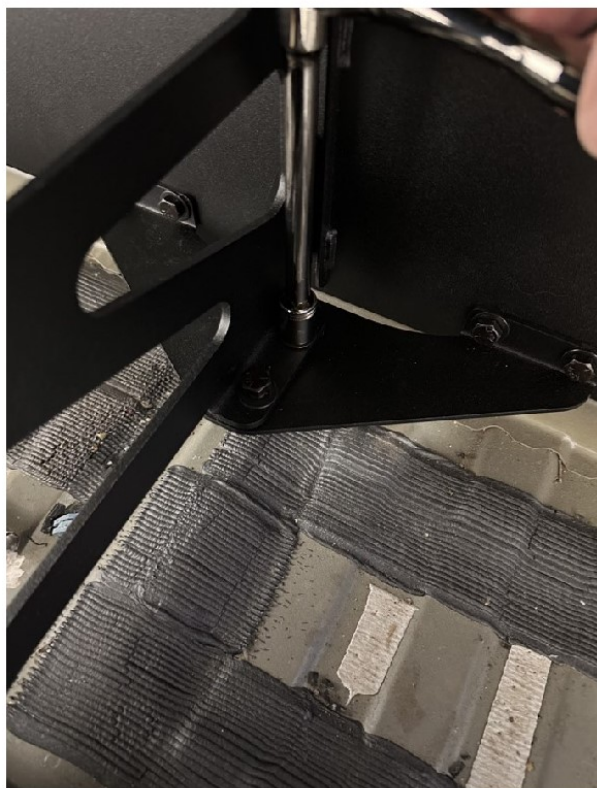
Seat Brace Installation:

5. Tightly fasten the REAR BRACE to the partition using four 3/8 x 1" bolts and washers (1), then tighten the MID BRACE as shown (2).

1



2



6. Tighten the top two bolts to the FRONT BRACE (3), then tighten the lower bolt (4).

3



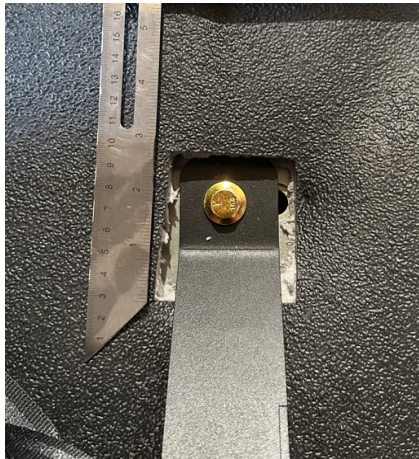
4



Seat Brace Installation:

7. Fasten the FRONT BRACE to the vehicle using the two M10 x 40mm class 10.9 flange bolts from 7120-1288

NOTE: Make sure the stud is removed from the driver side mounting location. See Page 4 if that step was not completed



Buckle Installation:

8. On both the driver and passenger side, remove the "AIRBAG" cover and OEM fastener to gain access behind C-pillar.



Passenger side shown

9. At the bottom of the C-pillar, remove the OEM fastener and pull the belt through the upper trim panel. Wrap and secure the belt and tongue behind the C-pillar trim with cable ties to prevent rattling.

Bundle and secure the
seatbelt behind the C-pillar



Passenger side shown

10. Install the Driver side "D" and the passenger side "P" SEATBELT COVERS provided in the 7120-1291 hardware bag as shown below. Use the #10-32 x 0.625" carriage bolts, the large diameter #10 (0.738") washers and #10 nylok nuts to secure the cover plates to the OEM trim.



Passenger side shown

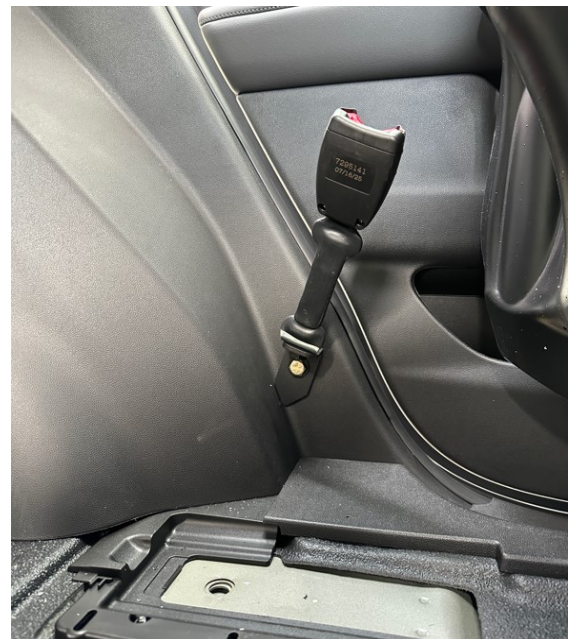
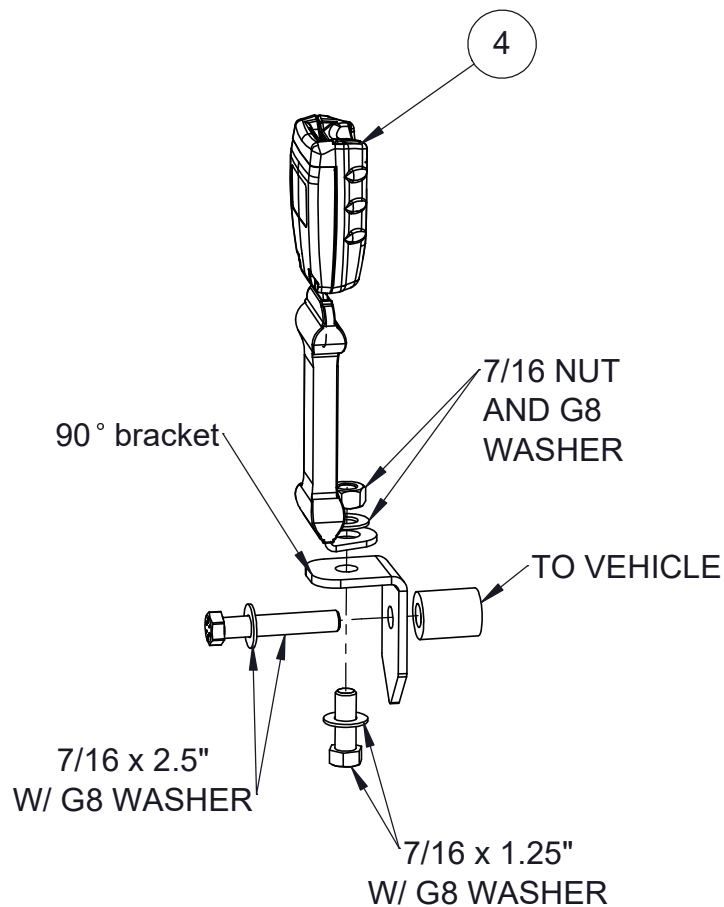
Buckle Installation:

11. On both the driver and passenger side, open the hole in the lower C-pillar trim panel to allow the 1.25" long spacer (hardware bag 7120-1292) to fit.



Driver side shown

12. Install the 9" SEATBELT BUCKLE (ITEM 4) on each side using the grade 8 hardware shown below:



NOTE: The 90° bracket sets the angle of the buckle assembly against the vehicle trim.

Driver side shown

Retractor Installation:

13. Using the grade 8 hardware, install both seat belt retractors and D-rings onto the partition as shown. **See hardware referenced on page 3.**



14. Place the REPLACEMENT SEAT (ITEM 8) into the vehicle, pull the retractor anchors over the seat and route them through the center clearances of the seat. Fasten the anchors to the Front Brace as shown below with the 7/16" grade 8 hardware from 7120-1292.

NOTE 1: Ensure the seat belts are not twisted.

NOTE 2: Ensure the anchors are pointed in the correct direction shown below



Viewed from driver side



Driver side anchor

Replacement Seat Installation:

15. Carefully guide the driver and passenger side 9" buckles through the clearances in the seat and place the seat into position.



Driver side shown

16. For both driver-side and passenger-side, route the section of seat belt that is underneath the D-ring into the cutout of the seat as shown below. Ensure the belt is not twisted or pinched between the partition and the seat.

NOTE: Extend and retract the seat belt at all angles to ensure correct operation with no binding.



Driver side shown

Finishing the Installation:

17a. Using the 1/4-20 x 7/8", 1/4" x 1" OD fender washers and nylok nuts **referenced on page 3 (7120-1288)**, fasten the top edge of the seat to the partition **(1)**.



17b. Place the center seat belt cover plate (from hardware bag 7120-1291) over the seat belts and fasten with the 1/4-20 x 7/8" and regular 1/4" washers as shown **(2)**.



17c. Using either the OEM hardware, or the provided M10 x 30mm flange bolts, add the 3/8" x 1" OD washers (7120-1288) and fasten the bottom of the seat to the vehicle **(3)**.



Finishing the Installation:

17. Place the driver and passenger side buckle covers as shown and fasten with the provided push pins from hardware bag 7120-1291.



Passenger side shown

18. On both sides of the vehicle, drill a 3/8" clearance hole and mount the 4.7" FIXED BUCKLES (item 3) to the passenger partition using the provided 3/8-16 x 1" fasteners, 3/8" washers and nylok nuts from hardware bag 7120-1292.

NOTE: Ensure the door does not come in contact when closed.



Driver side shown



Installation is complete