



INSTALLATION INSTRUCTIONS

Product

7160-1601

FREIGHTLINER M2 BENCH SEAT MOUNT

Revision

REV B

Form

INST-1078

Printing Spec: PS-001

The Freightliner M2 bench seat mount is designed to attach to the front of the existing bench seat enclosure box. This instruction sheet is for the bench seat mount only. The mount is designed to be used in conjunction with various Gamber-Johnson upper poles, motion attachments, and cradles or docking stations. The instruction sheets for the various upper mounting equipment will be supplied with that equipment.

Views of the bench
seat mount installed
in a vehicle



Product Mounting Disclaimer

Gamber-Johnson is not liable under any theory of contract or tort law for any loss, damage, personal injury, special, incidental or consequential damages for personal injury or other damage of any nature arising directly or indirectly as a result of the improper installation or use of its products in vehicle or any other application. In order to safely install and use Gamber-Johnson products full consideration of vehicle occupants, vehicle systems (i.e., the location of fuel lines, brake lines, electrical, drive train or other systems), air-bags and other safety equipment is required. Gamber-Johnson specifically disclaims any responsibility for the improper use or installation of its products not consistent with original vehicle manufactures specifications and recommendations, Gamber-Johnson product instruction sheets, or workmanship standards as endorsed through the Gamber-Johnson Certified Installer Program.

© Copyright 2026 Gamber-Johnson, LLC

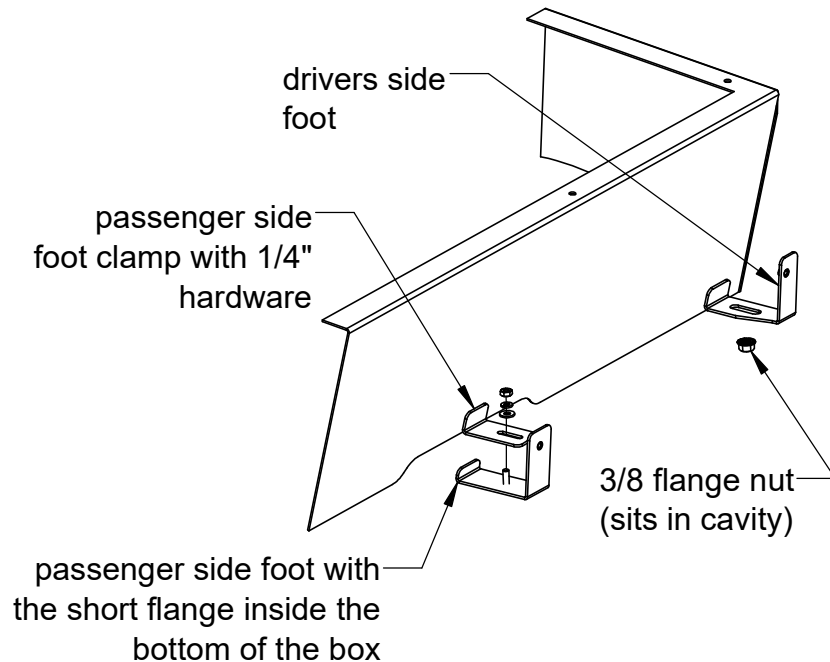
If you need assistance or have questions, call Gamber-Johnson at 1-800-456-6868

Installing the mount

1. Lift the bench seat cushion to reveal the top edge of the bench seat enclosure box.
2. Remove the rubber bumper from the top drivers side corner of the enclosure box.
3. Remove the front drivers side enclosure box floor bolt with a T35 torx bit.
4. Lift up on the corner of the box to slide the short flange of the passenger side foot under the bottom edge of the box. You might need to loosen another enclosure floor bolt to get the foot underneath. Slide the passenger side foot along the bottom of the box until it is sitting on the raised floor hump portion.
5. Loosely attach the passenger side foot clamp to the passenger side foot (outside the box) with the 1/4" flat washer, lock washer, & hex nut provided in hardware bag 7120-1006. Do not tighten completely because you might have to adjust the position left to right for the final assembly.
6. Place the 3/8 flange nut (found in hardware bag 7120-1006) inside the enclosure foot cavity (where the floor bolt was removed) with the flange facing upward. This is acting as a spacer for attaching the drivers side foot.
7. Attach the drivers side foot to the floor with the floor bolt removed in step 3. Position the foot on top of the 3/8" nut spacer and tight against the front of the enclosure box. Insert the floor bolt through the foot and 3/8" nut spacer and tighten in place.

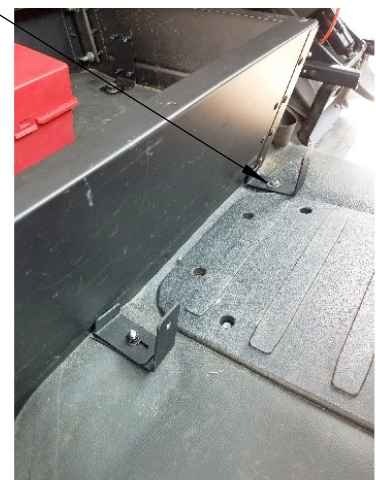
rubber bumper

drivers side
floor bolt



floor bolt reinserted
through the foot and
3/8" nut spacer

view with legs
attached to front
of enclosure box



Installing the mount (cont.)

8. Attach the tall vertical base to the main bench seat mounting plate with the (4) 1/4" carriage bolts, flat washers, lock washers, and hex nuts found in hardware bag 7120-1006. The pole can be positioned anywhere along the long horizontal slots.

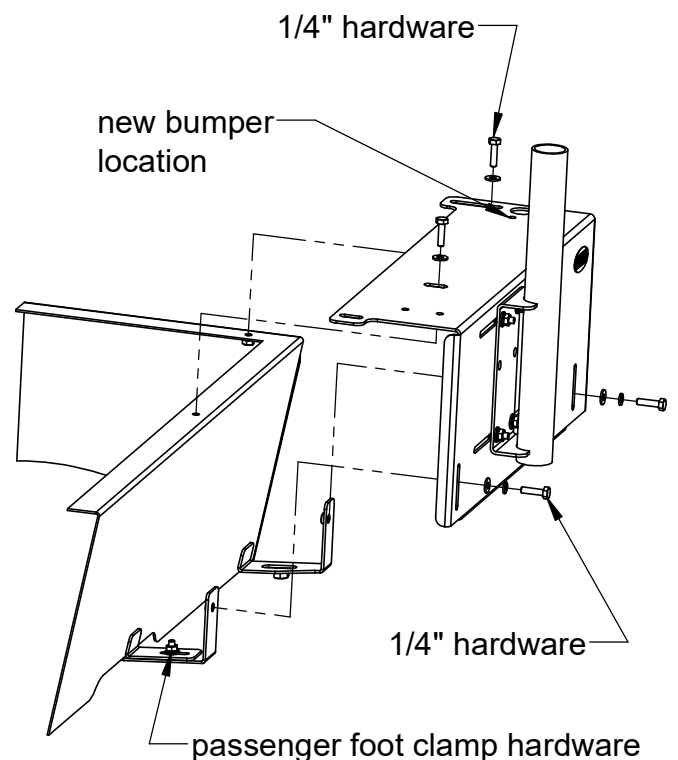
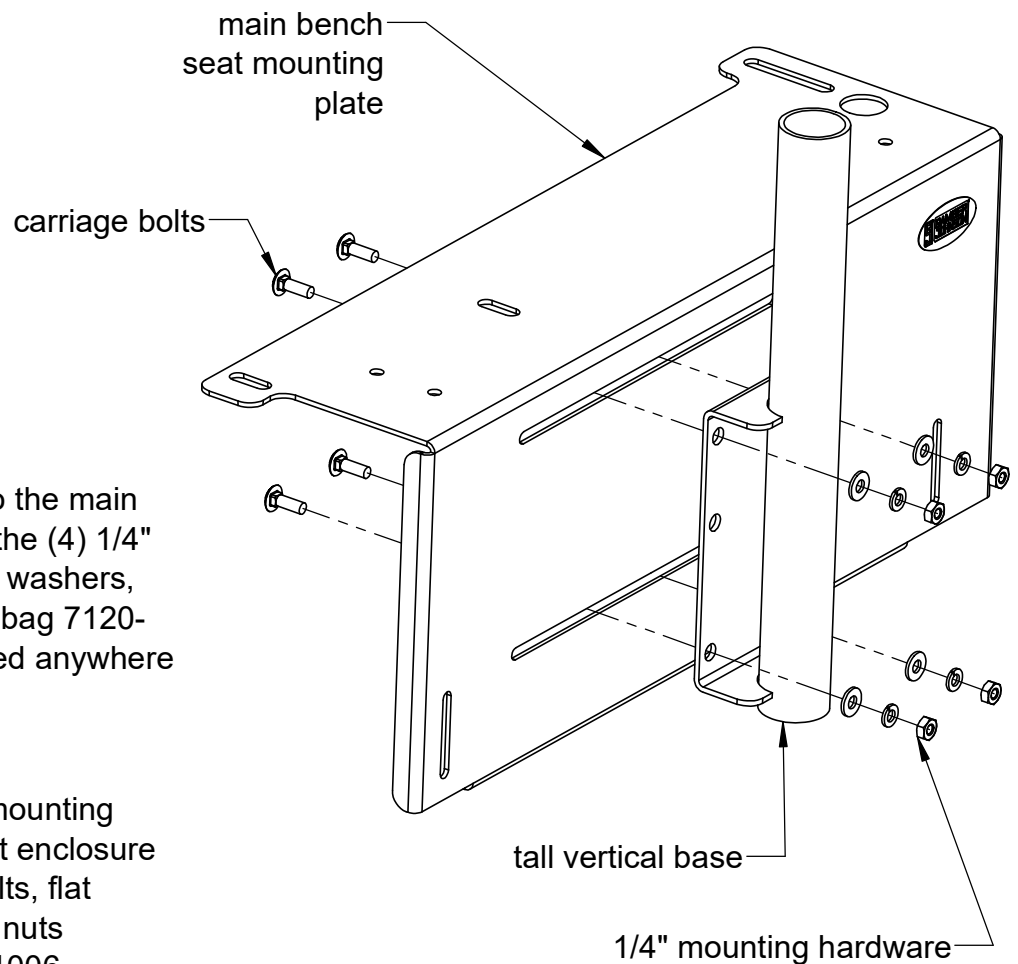
9. Attach the main bench seat mounting plate to the top of the bench seat enclosure with the 1/4" x 1.00" long hex bolts, flat washers, lock washers, and hex nuts supplied in hardware bag 7120-1006.

Note: there are 2 different slot locations that can be used depending on the bench seat model in your specific vehicle. Use the slots that best positions the pole in a vertical orientation.

10. Attach the main bench seat mounting plate to the drivers side and passenger side feet (previously installed) with the 1/4" x 1" hex bolts, flat washers, and lock washers supplied in hardware bag 7120-1006.

11. Tighten the passenger foot clamp hardware installed in step 5 if you have not done it yet.

12. Attach the bumper removed in step 2 to one of the new holes in the main bench seat mounting plate.



Various installation photos

