

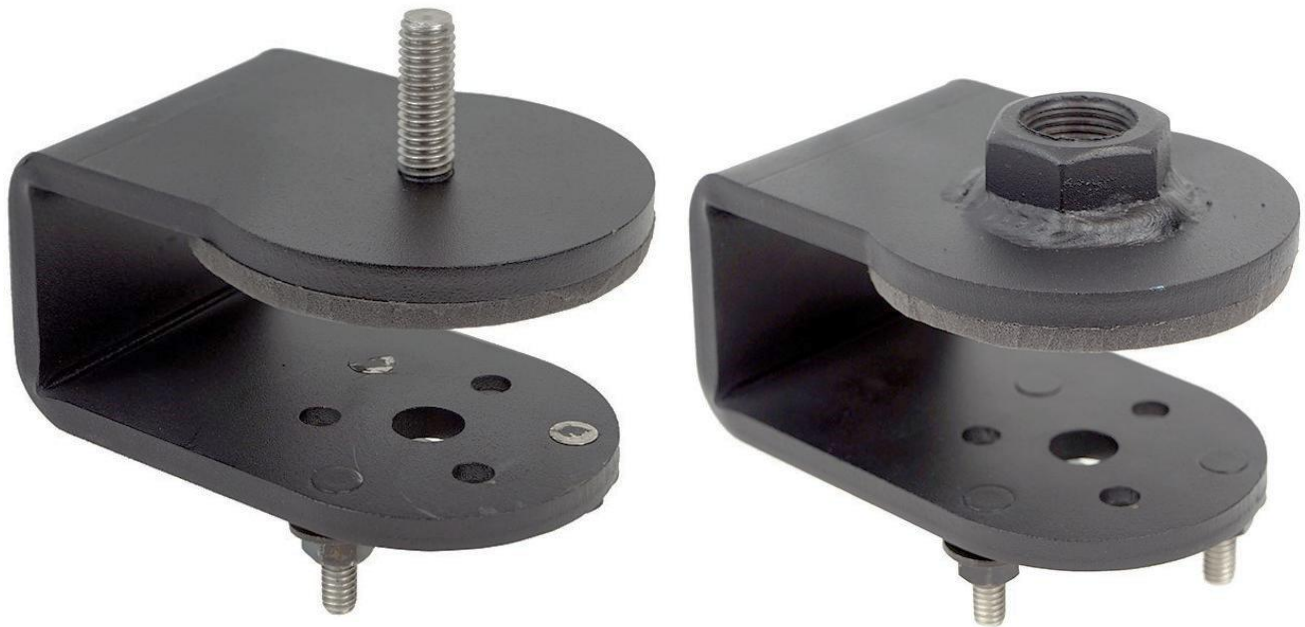
PRODUCT GUIDE

INDEPENDENT TABLET ROTATION BRACKET

PRODUCT NUMBER(S)

7110-1305

7110-1306



For more language options and/or questions, please contact a Gamber-Johnson representative at **+1 800.756.9198**

Since 1954, we have been dedicated to providing **RUGGED**, **RELIABLE**, and **RESPONSIVE** solutions that empower professionals in the field.

Thank you for choosing Gamber-Johnson.

Welcome to your new **Gamber-Johnson Motion Attachment**—engineered for **mission-critical reliability** in the toughest environments. At Gamber-Johnson, we understand that your technology is more than a tool; it's a lifeline. That's why our rugged mounting solutions and docking stations are designed to integrate seamlessly with your equipment, ensuring **secure connections** and **reliable performance** wherever your job takes you.

This guide will walk you through the safe and effective installation of your **Motion Attachment**.

Inside, you'll find:

- Inventory list of what's included
- Step-by-step installation instructions
- Images for easy reference
- Essential safety information to ensure proper setup and operation

Our commitment to **quality**, **durability**, and **rugged reliability** is built into every product we make.

Important: Before you begin, please carefully review all safety instructions provided in this guide. For vehicle applications, we recommend professional installation by qualified technicians with experience in automotive electrical systems and aftermarket vehicle equipment installation.

For additional product information, installation tips, or support, please contact your Gamber-Johnson representative at **+1 800.756.9198** or visit **www.gamberjohnson.com**.

PAGE	SECTION
1	Cover Page
2	Introduction
3	Table Of Contents
4	Safety Information
5-6	Installation
7	Warranty

WARNING

You must read and follow all of these installation instructions prior to use. Failure to follow all of these installation instructions may result in serious bodily injury or death.

Do not install or use the Mongoose XE or XLE in the area in which the airbag on the vehicle will be deployed if it is activated. The installer and user of the Mongoose XE or XLE are responsible for installing and using the Mongoose XE or XLE outside the area in which an airbag will be deployed if activated. (See Product Mounting Disclaimer Below)

The carriage of the Mongoose XE or XLE should always be moved to the stowed position or furthest point over the pivoting end of the arm before operating or moving the vehicle. This stowed position must also be located outside of the air bag zone.

Never use equipment that has been damaged, is missing parts, or has the braking system disabled.

Keep these installation instructions with the product and readily available in the vehicle for future reference of other users of the product.

Additional copies of the installation instructions can be obtained from Gamber-Johnson. If you need assistance or have any questions, please call Gamber-Johnson at **+1 800-756-9198**.

These instructions detail the installation of the Independent Tablet Rotation Brackets (ITRB) 7110-1305 and 7110-1306. This product can only be installed on a Mongoose XE or Mongoose XLE.

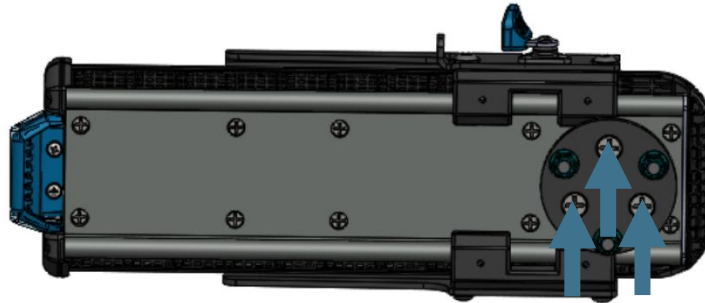


Figure 1

1. In order to install the ITRB you must first remove the mounting plate from the Mongoose XE or XLE. Remove the (3) 1/4"-20 screws and the mounting plate as shown. (Figure 1)

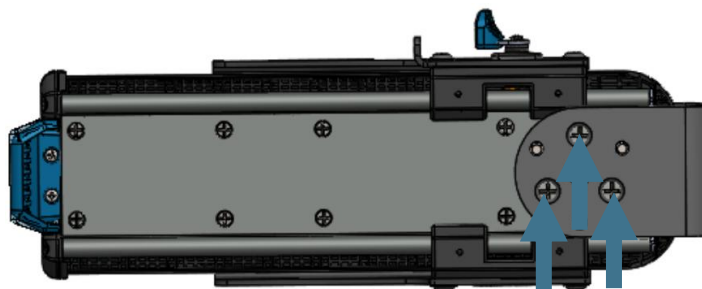
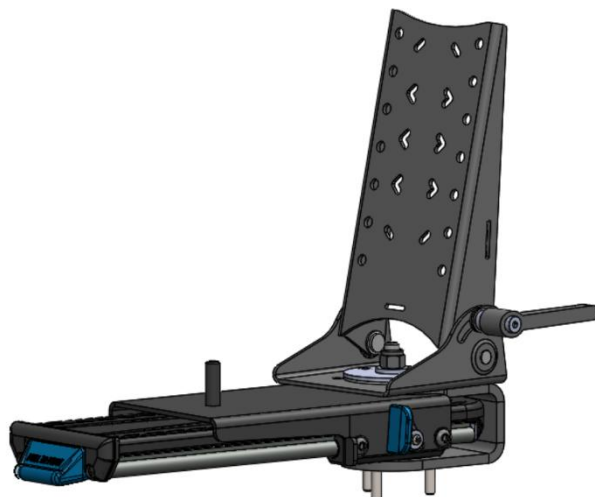
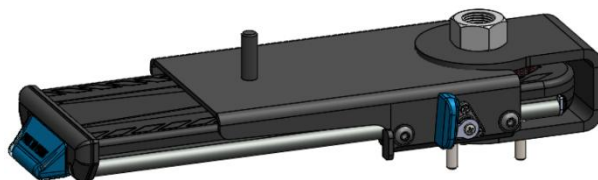


Figure 2

2. Slide the ITRB bracket into position and using the 1/4"-20 screws from the 7120-0936 hardware bag, place some thread locker on the screws and tighten as shown. (Figure 2)



3. An optional clevis or tablet display mount (as shown) can be mounted to the 3/8" stud of the 7110-1305.
 4. Install by placing in order: 1 bearing, the clevis or tablet display mount, a 2nd bearing, a backing plate, and a 3/8"-20 nylok nut.
 5. Tighten the nut to allow a desired resistance that the clevis or tablet display mount can rotate but is secure enough not to move when vehicle is in motion.
-



6. The M-20 nut of the 7110-1306 will accommodate numerous Zirkona mounting solutions. Please visit www.gamberjohnson.com or contact a Gamber-Johnson representative at +1 800.756.9198 for all the options.



SCAN HERE TO VIEW WARRANTY INFORMATION

www.gamberjohnson.com/product-services/warranty-information

Product Mounting Disclaimer

Gamber-Johnson is not liable under any theory of contract or tort law for any loss, damage, personal injury, special, incidental or consequential damages for personal injury or other damage of any nature arising directly or indirectly as a result of the improper installation or use of its products in vehicle or any other application. In order to safely install and use Gamber-Johnson products full consideration of vehicle occupants, vehicle systems (i.e., the location of fuel lines, brake lines, electrical, drive train or other systems), air-bags and other safety equipment is required. Gamber-Johnson specifically disclaims any responsibility for the improper use or installation of its products not consistent with original vehicle manufactures specifications and recommendations, Gamber-Johnson product instruction sheets, or workmanship standards as endorsed through the Gamber-Johnson Certified Installer Program.

© Copyright 2025 Gamber-Johnson, LLC

QUESTIONS OR NEED MORE INFORMATION?

NO PROBLEM, WE'RE HERE TO HELP!

Call us at: **+1 800.756.9198**

Email us at: sales@gamberjohnson.com

Visit www.gamberjohnson.com to see our complete line of solutions and hang with us on social media at [@gamberjohnson](https://www.instagram.com/gamberjohnson)