



# INSTALLATION INSTRUCTIONS

<u>Product</u>	<u>Revision</u>	<u>Form</u>
7160-1585 KEYBOARD, 2-in-1 ATTACH, ET5X 10"	Rev. A	INST-1020
		Printing Spec: PS-001

This instruction sheet is for the Gamber-Johnson 2-in-1 Attachable Keyboard only. For instructions on features, set-up, and operation of the Zebra tablets, please refer to the user guide on zebra.com.

This attachable keyboard is designed to be used with the Zebra ET5X 10" tablets without the rugged case and is compatible with the Windows and Android models. It is designed to assist users in the rugged market and be used outside as well as in the office. It is not designed to be mounted in a vehicle as it does not meet the specific safety standards Gamber-Johnson requires for rugged products in the vehicle. Gamber-Johnson offers a full line of products to mount the tablet in the vehicle. Please visit [gamberjohnson.com](http://gamberjohnson.com) for more information.

This instruction sheet is for the following products:

- Item No. 7160-1585-00 English (US)\*
- Item No. 7160-1585-01 English (UK)
- Item No. 7160-1585-02 German
- Item No. 7160-1585-03 French
- Item No. 7160-1585-04 Spanish
- Item No. 7160-1585-05 French (CA)
- Item No. 7160-1585-06 Thai

For more language options, please contact a Gamber-Johnson or Zebra representative.

\*All images in this document are of the U.S. keyboard layout only.



**Product Mounting Disclaimer**

Gamber-Johnson is not liable under any theory of contract or tort law for any loss, damage, personal injury, special, incidental or consequential damages for personal injury or other damage of any nature arising directly or indirectly as a result of the improper installation or use of its products in vehicle or any other application. In order to safely install and use Gamber-Johnson products full consideration of vehicle occupants, vehicle systems (i.e., the location of fuel lines, brakes lines, electrical, drive train or other systems), air-bags and other safety equipment is required. Gamber-Johnson specifically disclaims any responsibility for the improper use or installation of its products not consistent with the original vehicle manufactures specifications and recommendations, Gamber-Johnson product instruction sheets, or workmanship standards as endorsed through the Gamber-Johnson Certified Installer Program.

© Copyright 2021 Gamber-Johnson, LLC

If you need assistance or have questions, call Gamber-Johnson at 1-800-456-6868.

# FEATURE IDENTIFICATION - KEYBOARD



# FEATURE IDENTIFICATION - CONNECTOR ADAPTER



## INSERTING THE CONNECTOR ADAPTER



Remove the rubber seal from the bottom of the tablet and discard it. At this point, the tablet is no longer IP65 rated.

Align the Connector Adapter so it matches the shape of the tablet. The Connector on the adapter will mate with the connector on the tablet. The adapter can only be inserted in one direction.

Insert the adapter into the connector opening on the tablet. Keep the connector straight and press until an audible confirmation is recognized. At this point, the Snaps on the adapter have securely latched the adapter to the tablet. The tablet is IP65 rated again and is ready to use with the keyboard.

## REMOVING THE CONNECTOR ADAPTER



-- Optional --

The Connector Adapter may cause interference with other devices such as the Zebra Charge Dock or ShareCradle System. The adapter can be removed so the tablet can be used with those devices.

Use fingers or finger nails to find the edge or grooves in the adapter plastic. Pull straight out until the Snaps release the adapter from the tablet. The tablet is now ready to use with other devices. The adapter will need to be inserted again to use the keyboard.

# INFORMATION ABOUT USING THIS PRODUCT

## Environmental Conditions

This keyboard, including the Pogo Pins and the USB2.0 Input Port is IP54 rated. No plug or cover is needed. This rating applies with or without the tablet; however, any damage to the product, even if the product is still functional, may negate the IP rating. There is also a pair of Drain Holes at the bottom corners of the Cover to help drain excess water. The Connector Adapter is IP65 rated while attached to the tablet.

This keyboard is rated for use and storage at these temperatures:

Operating -20 °C to 50 °C (-4 °F to 122 °F)  
Storage -40 °C to 85 °C (-40 °F to 185 °F)

This keyboard is tested to a hybrid of Gamber-Johnson rugged standards including life cycle testing of the hinge and the removal of the tablet. It is designed to assist in the rugged market, but it is NOT designed to mount in a vehicle.

## Using the Product

This keyboard is designed to be plug & play with both Windows and Android tablets. Simply insert the Connector Adapter and dock the tablet. It is now ready to use.

There is a USB 2.0 Input Port that supplies 500 mA of power. This port can be used to quickly and easily attach a flash drive, mouse, or other digital device with a USB type A plug.

There are 12 function keys as well as a range of preset quick keys. These keys may not perform the same function on each platform or program.

The keyboard is designed to work with the Cover open from 90° to 122° but is best at 122°. The Rubber Pads and Built-in Kickstand provide support and prevent the keyboard from slipping while being used. The Cover opens to a max of 122°. (See right.)

There is a hard stop to prevent it from opening further. Trying to open the Cover beyond this angle may result in permanent damage.

All features of the tablet including the camera, microphones, speakers, USB-C port, and buttons at the top, remain accessible. Use the USB-C port on the tablet to charge the tablet. (See right.)

The blue Bumpers and other features provide support for the product to survive vibration if it is loose in a vehicle and closed. They also provide limited support for accidental impact and drops.

The Carry Handle adds mobility while moving and stability while using on a table. The Carry Handle has one hole on each corner that can accommodate a plastic snap-on shoulder strap. The recommended Zebra product is SG-ET5X-SHDRSTP-01. (See right.)



# DOCKING AND UNDOCKING THE TABLET

## Docking the Tablet

Visit our website and YouTube channel for more information about the product.

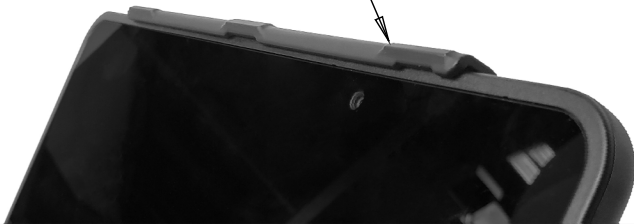
1. Open the Cover by holding down the keyboard and pulling up on the top. It will rotate at the hinge.

2. Position the tablet in the Cover by placing the bottom onto the Pogo Pin Connector. The Side Walls will guide the tablet into the correct location.

3. Rotate the tablet back into the Cover. Snap the Top Latch Ridge over the tablet by pressing on the back of the cover, near the corners.



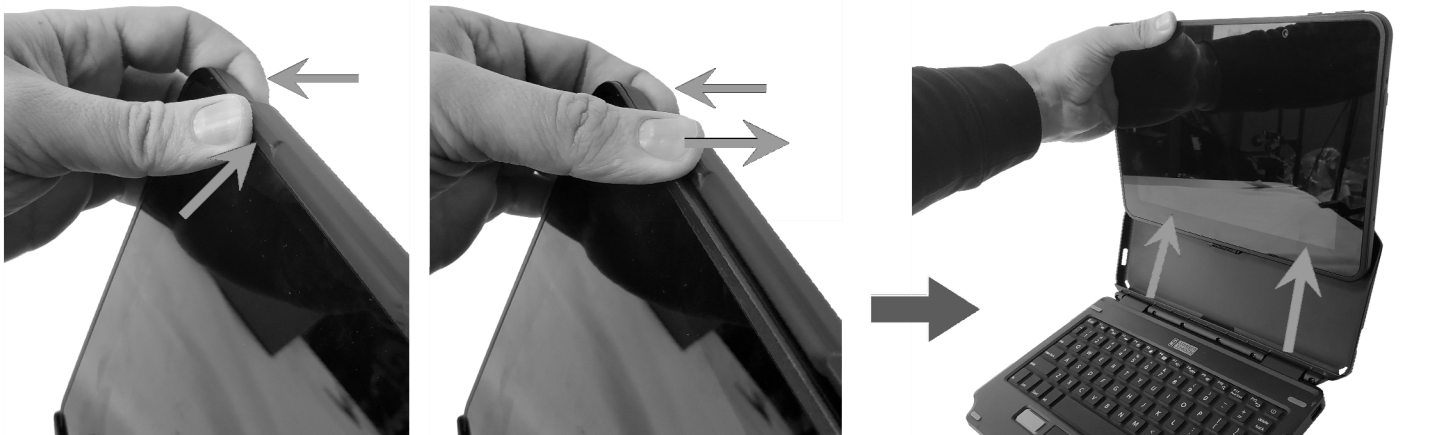
"Latched" Position



## Undocking the Tablet

1. Using your thumb, push upward on the corner of the Top Latch Ridge. There is a slight platform to push on. At the same time, pry forward on the back corner of the tablet using your fingers. Do this on both sides at the same time.

2. Once the top edge of the tablet is free from the Top Latch Ridge, remove the tablet.



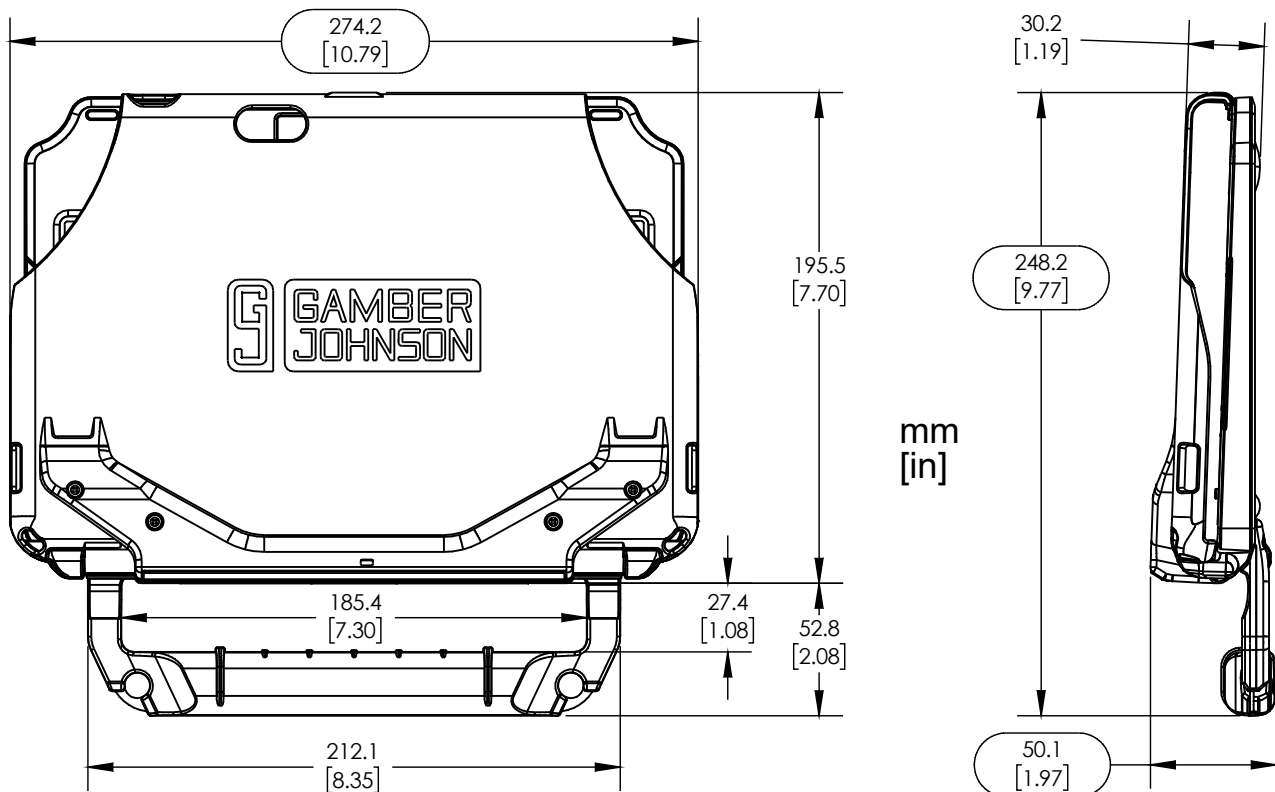
# KEYBOARD DETAILS

## SPECIFICATIONS

Data Port	USB 2.0 type A, 500 mA
Charging Port	Use tablet USB-C port
Power	Keyboard uses power from the tablet
Dimensions	274.1 mm (10.79") x 248.2 mm (9.77") x 50.1 mm (1.97")
Weight - Keyboard	0.857 kg (1.89 lbs)
Weight - with Tablet	1.610 kg (3.55 lbs)
Operating Temperature	-20 °C to 50 °C (-4 °F to 122 °F)
Storage Temperature	-40 °C to 85 °C (-40 °F to 185 °F)
Ingress - Keyboard	IP54
Ingress - Adapter	IP65
Drop - System *	0.61 m (24.0") to wood
Drop - Adapter **	1.00 m (39.4") to concrete - matches tablet
Life Rating	3,000 cycles inserting tablet, 30,000 cycles opening/closing
Speakers	Use tablet speakers
Mounting	None
Compatibility	Windows 10 and Android, ET51 and ET56 10.1" tablets
Warranty	1 Year

\* The keyboard system is designed to be durable and survive minor drops and contact, but is not intended to be a fully rugged device.

\*\* When attached to the tablet, the connector adapter will not compromise the drop rating of the tablet.



# REGULATORY CERTIFICATION INFORMATION

Regulatory Model #: **7160-1585**

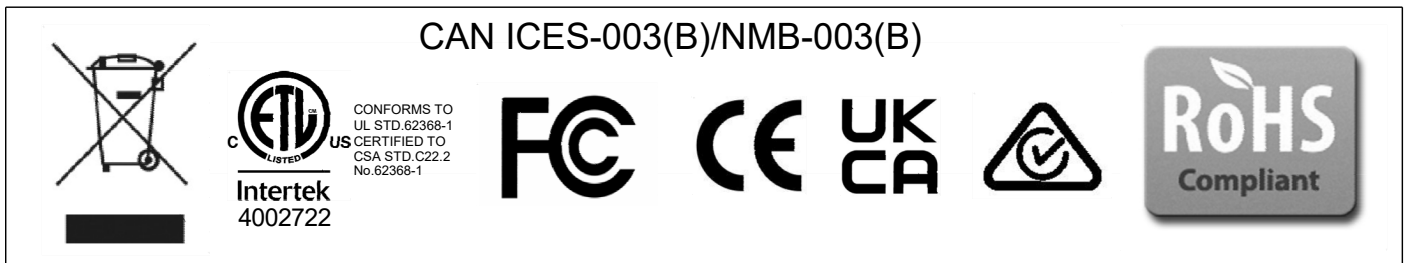
GJ Part Numbers and Description:

<b>7160-1585-00</b>	Keyboard, 2-in-1 Attach, ET5X 10", English (US)
<b>7160-1585-01</b>	Keyboard, 2-in-1 Attach, ET5X 10", English (UK)
<b>7160-1585-02</b>	Keyboard, 2-in-1 Attach, ET5X 10", German
<b>7160-1585-03</b>	Keyboard, 2-in-1 Attach, ET5X 10", French
<b>7160-1585-04</b>	Keyboard, 2-in-1 Attach, ET5X 10", Spanish
<b>7160-1585-05</b>	Keyboard, 2-in-1 Attach, ET5X 10", French (CA)
<b>7160-1585-06</b>	Keyboard, 2-in-1 Attach, ET5X 10", Thai

Certifications:

- EN 55032: 2015+A11:2020 (Class B)
- EN 55035: 2017
- EN 62368-1
- IEC 62368-1
- UL 62368-1
- IEC 60529: 2013, IP54 rated - Keyboard
- IEC 60529: 2013, IP65 rated - Connector Adapter + Tablet

This device complies with Part 15 of the FCC Rules. Operation is subject to the following two conditions: (1) This device may not cause harmful interference, and (2) this device must accept any interference received, including interference that may cause undesired operation.



Gamber-Johnson LLC, 3001 Borham Ave.,  
Stevens Point, WI, 54481, USA, 715-344-3482