



a **TEAM GJ** brand

PANASONIC TOUGHBOOK® 40 TRIMLINE DOCKING STATION

Engineered to endure the most rugged environments.

Engineered for rugged reliability in harsh environments and highly demanding conditions, to operate seamlessly with the Panasonic Toughbook 40 laptop. Manufactured using high grade aluminum to ensure the smallest possible footprint inside a vehicle, offering maximum use of cabin space to the vehicle operator for increased comfort and safety.

PRODUCT MEASUREMENTS

WEIGHT	HEIGHT	WIDTH	DEPTH
4.5 lbs / 2.04 kg	2.8 in / 7.11 cm	14.65 in / 37.21 cm	12.31 in / 31.27 cm

ACCESSORIES

- Panasonic 120W Power Adapter with LED (7300-0610)
- Panasonic Toughbook 40 Trimline Screen Support (7300-0602)

CERTIFICATES & TESTING

- Panasonic Toughbook Certified
- MIL-STD-810-H
- Vibration & Shock
- Cycle –Latch/Unlatch 30,000 cycles
- Environmental
- FCC, CE, UKCA, RoHS

INDUSTRIES



PUBLIC SAFETY



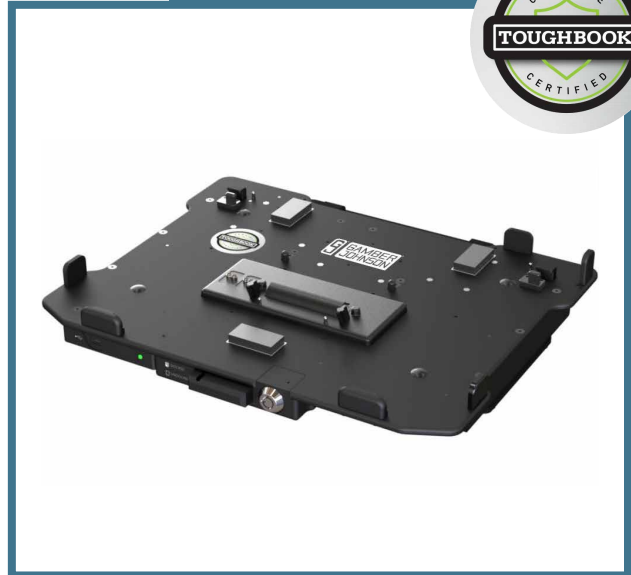
MATERIAL HANDLING
& WAREHOUSING



ENTERPRISE
& UTILITIES



LOGISTICS



FEATURES & BENEFITS

- CNC aluminum construction
- Genuine Panasonic electronics for maximum reliability
- Ergonomic design for safety and usability
- Connector pin protective cover to reduce risk of pin damage
- Universal VESA 75 mounting pattern
- Wedge Tilt 1.875" x 1.25" hole pattern
- Low profile footprint for increased usable cabin space
- Key lockable for added theft deterrence
- Rear facing ports with integrated cable management
- One handed operation
- Docked / Undocked visual indicator within release handle
- Front facing status indicator LED
- Optional screen lock available (Item 7300-0602)
- 3 Year Limited Warranty
- For additional product protection, explore our Extended Warranty and Gamber Guard Extended Service Plan



GAMBERJOHNSON.COM
+1 (800) 756-9198
SALES@GAMBERJOHNSON.COM

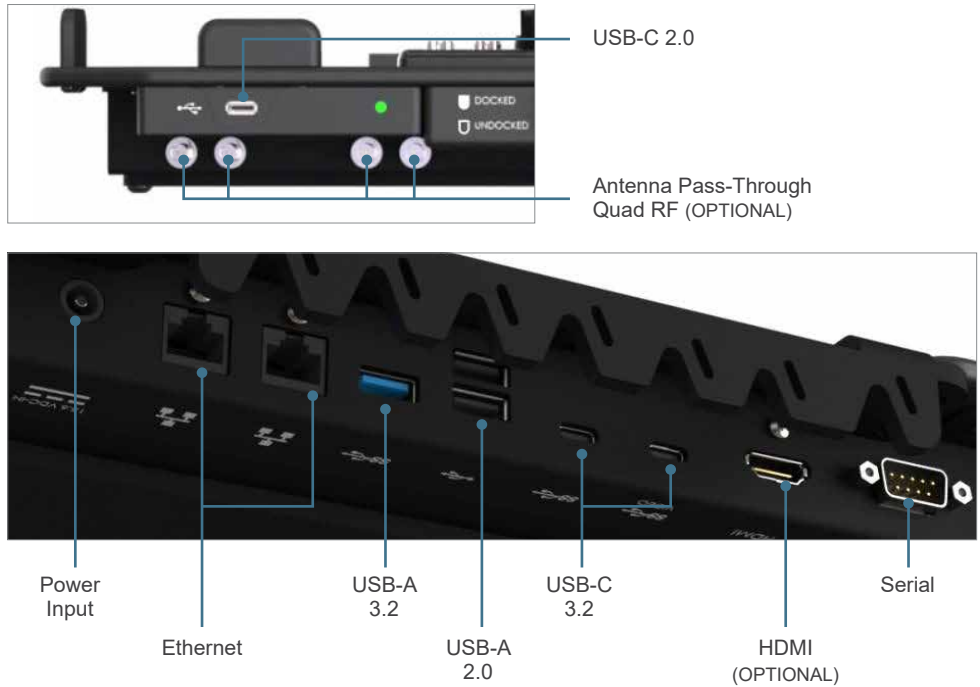


MOUNT IT. POWER IT. CARRY IT.

PANASONIC TOUGHBOOK® 40 TRIMLINE DOCKING STATION

PORT REPLICATION

- Panasonic Certified Electronics
- (2) Ethernet, RJ45
- (1) Serial, 9-pin
- (1 each) Mic / Aux
- (2) USB-C 3.2 (Max 1.5A@5V) with DisplayPort Alternate Mode*
- (1) USB-C 2.0 (500mA) front facing
- (1) USB-A 3.2 (900mA) - 9 pin
- (2) USB-A 2.0 (500mA) - 4 pin
- Power input (15V)
- (1) HDMI, 19 pin (OPTIONAL)
- Antenna Pass-Through Quad RF (OPTIONAL)



PRODUCT SELECTION

ITEM NUMBER	DESCRIPTION	HDMI (OPTIONAL)	SERIAL	ETHERNET	USB-A 2.0	USB-A 3.2	USB-C 3.2	USB-C 2.0 (FRONT-FACING)	RF PASS-THROUGH (OPTIONAL)	INCLUDES POWER ADAPTER
7300-0604-00	Panasonic Toughbook 40 Trimline Cradle	-	-	-	-	-	-	-		-
7300-0605-00	Panasonic Toughbook 40 Trimline Docking Station, Full Port, No RF	1	1	2	2	1	2	1	None	No
7300-0605-02	Panasonic Toughbook 40 Trimline Docking Station, Full Port, Quad RF	1	1	2	2	1	2	1	Yes	No
7300-0605-06	Panasonic Toughbook 40 Trimline Docking Station, Lite Port, No RF	-	1	2	2	1	2	1	None	No
7300-0605-07	Panasonic Toughbook 40 Trimline Docking Station, Lite Port, Quad RF	-	1	2	2	1	2	1	Yes	No
7300-0605-10	KIT: Panasonic Toughbook 40 Trimline Docking Station with LIND 120W Power Adapter, Full Port, No RF	1	1	2	2	1	2	1	None	Yes
7300-0605-12	KIT: Panasonic Toughbook 40 Trimline Docking Station with LIND 120W Power Adapter, Full Port, Quad RF	1	1	2	2	1	2	1	Yes	Yes
7300-0605-16	KIT: Panasonic Toughbook 40 Trimline Docking Station with LIND 120W Power Adapter, Lite Port, No RF	-	1	2	2	1	2	1	None	Yes
7300-0605-17	KIT: Panasonic Toughbook 40 Trimline Docking Station with LIND 120W Power Adapter, Lite Port, Quad RF	-	1	2	2	1	2	1	Yes	Yes



GAMBERJOHNSON.COM
 +1 (800) 756-9198
 SALES@GAMBERJOHNSON.COM



MOUNT IT. POWER IT. CARRY IT.